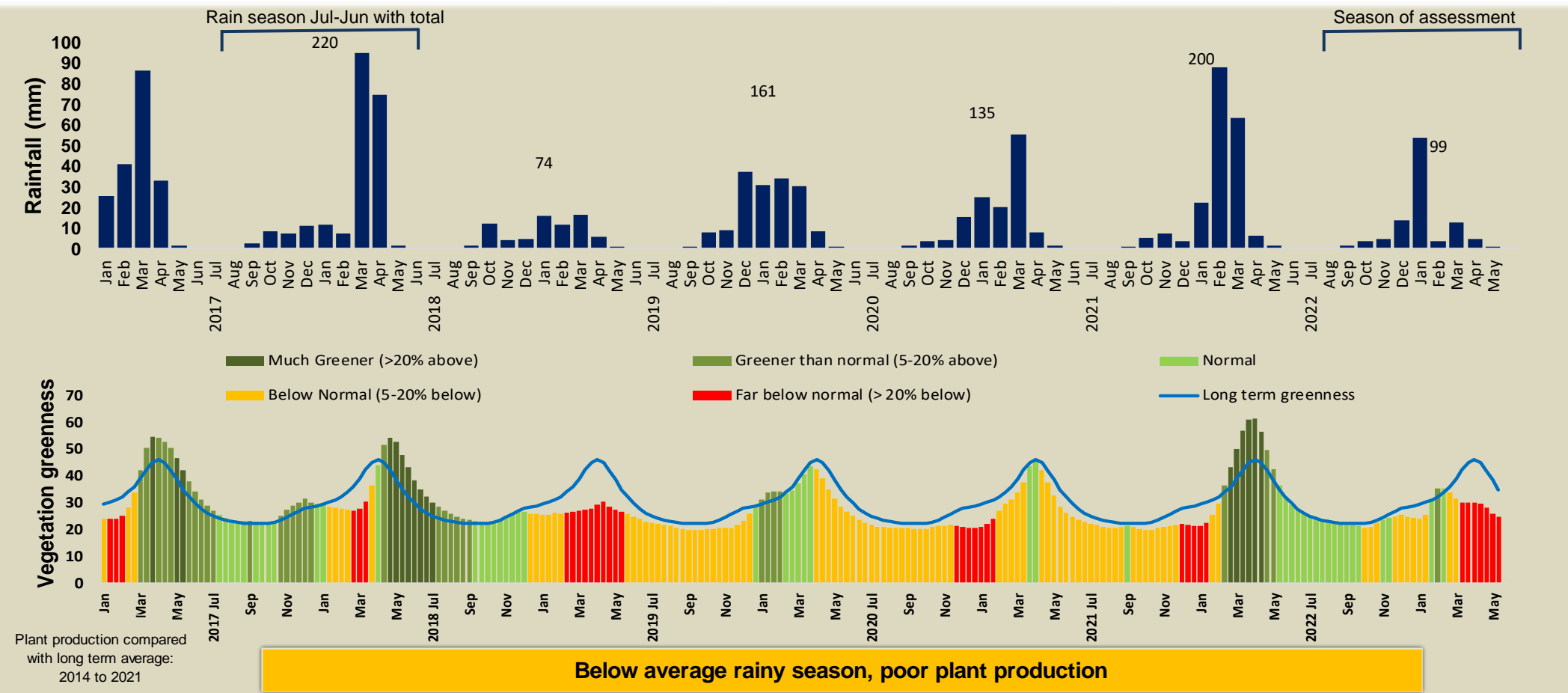


Ehi-Rovipuka Climate and Vegetation Report



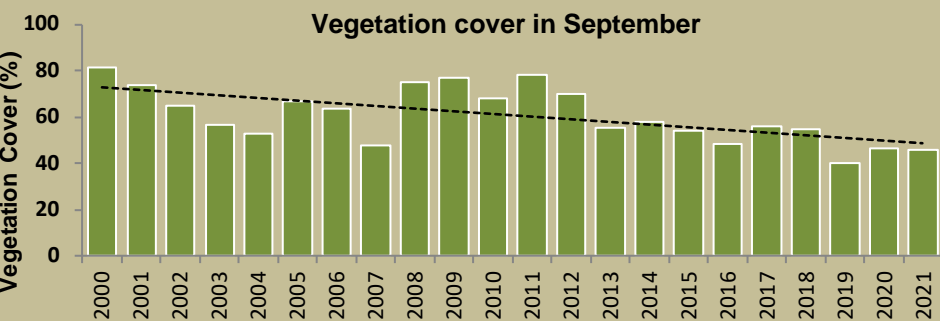
Adapting in response to the current environmental conditions ...

Seasonal trends in rainfall and vegetation (2022 / 2023 Season)



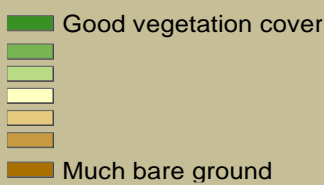
Vegetation cover trend (2000 - 2021)

High vegetation cover is good because more rainwater is prevented from running off, causing less erosion. Also, the soil is shaded leading to a decrease in soil temperature and evaporation.



Plant cover is decreasing - Why?

Vegetation cover : 2021

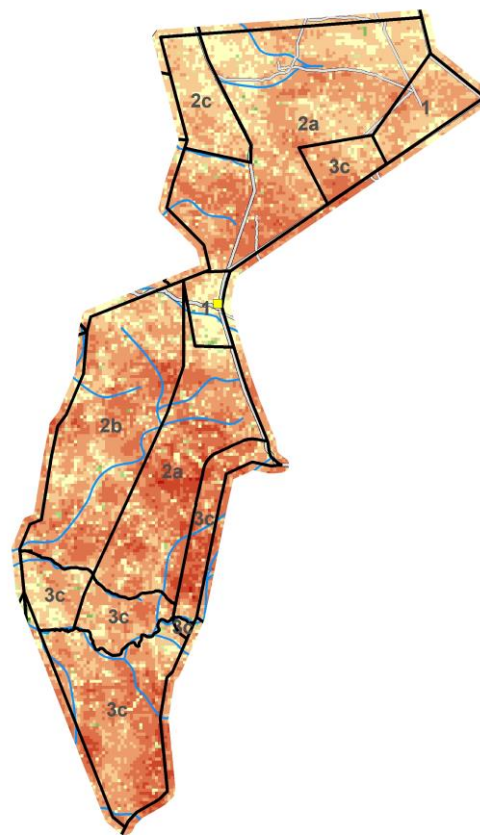


Vegetation productivity (February to April) 2023

Growing season

- Zones**
- 1) Settlement & Cropping Area
 - 2a) Multiple Use: Livestock Priority
 - 2b) Multiple Use: Hunting Priority
 - 2c) Multiple Use: Tourism Priority
 - 3a) Exclusive Wildlife: All Utilisation
 - 3b) Exclusive Wildlife: Trophy Hunting
 - 3c) Exclusive Wildlife: Tourism
 - 4) Forest

Difference from average



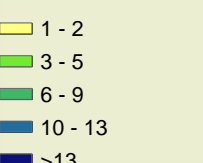
Fire management

Burns between 2000 and 2022 When and where it burnt in 2022

No fire monitoring



Times burned



Apr-Jul: 5.1 sq.km, 0.3 %

Aug-Dec: 98.3 sq.km, 5 %

Prevent late burns next season

Burned area

April - July

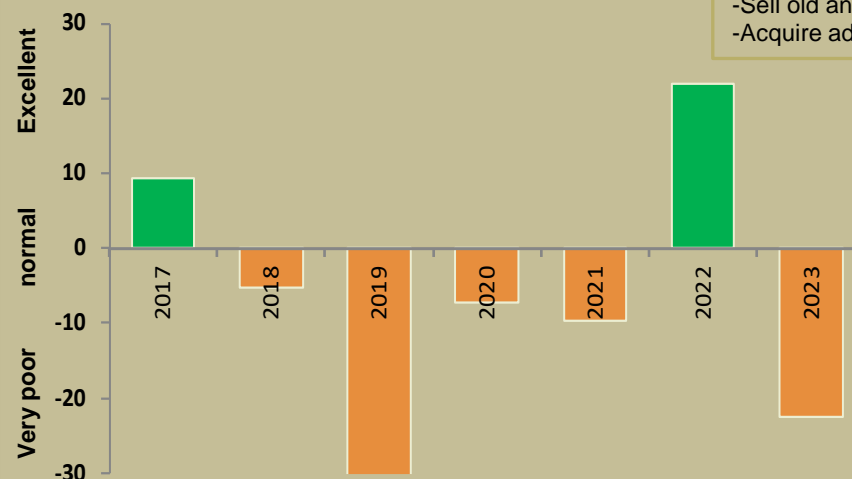
Aug - December

Forage availability

During the growing season enough forage must be produced to sustain livestock and game until the next rainy season

Management Options

- Do nothing
- Buy more animals
- Move animals to better grazing
- Sell old and unproductive animals
- Acquire additional forage



Below normal forage availability - Enough for livestock and game?



Climate and vegetation patterns assist in our understanding of the status of wildlife and livestock in the conservancy for the effective management of these resources.