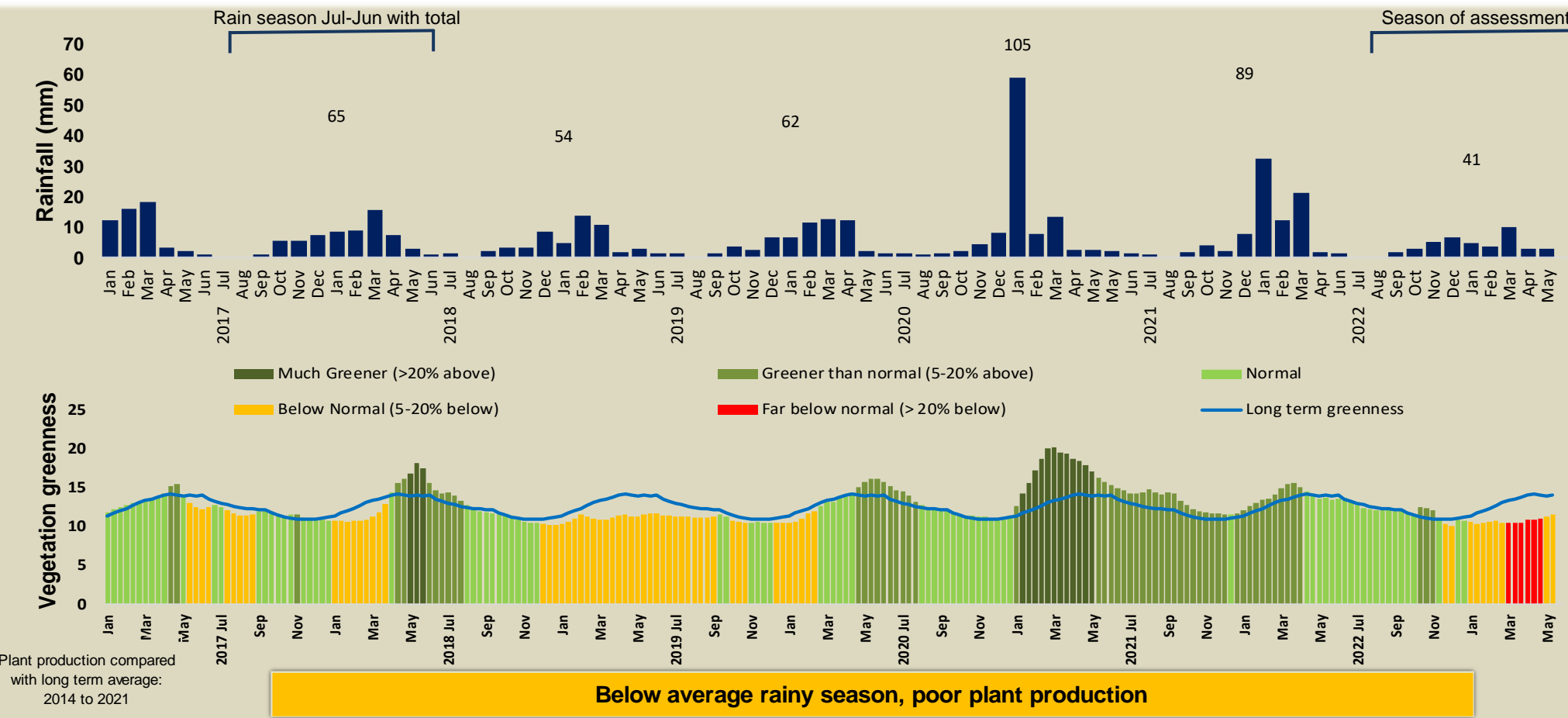




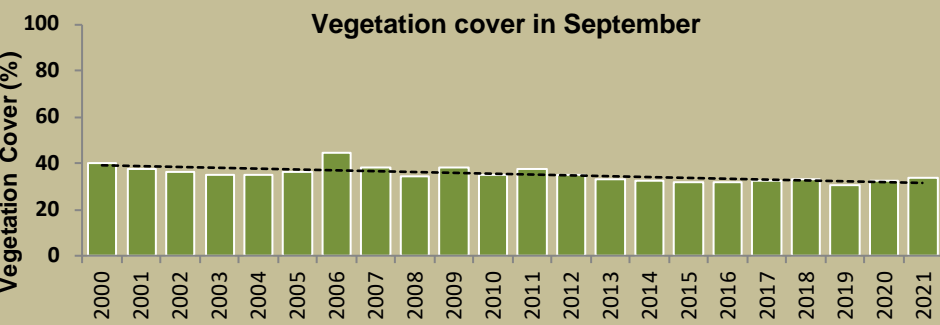
Adapting in response to the current environmental conditions ...

Seasonal trends in rainfall and vegetation (2022 / 2023 Season)



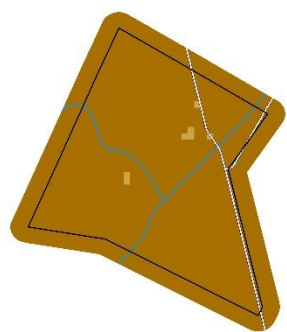
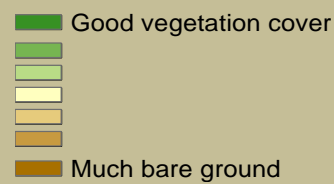
Vegetation cover trend (2000 - 2021)

High vegetation cover is good because more rainwater is prevented from running off, causing less erosion. Also, the soil is shaded leading to a decrease in soil temperature and evaporation.



Plant cover is decreasing - Why?

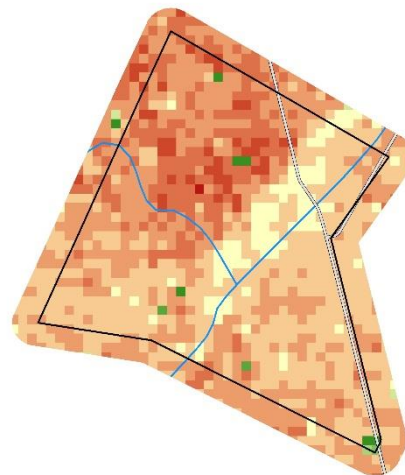
Vegetation cover : 2021



Vegetation productivity (February to April) 2023

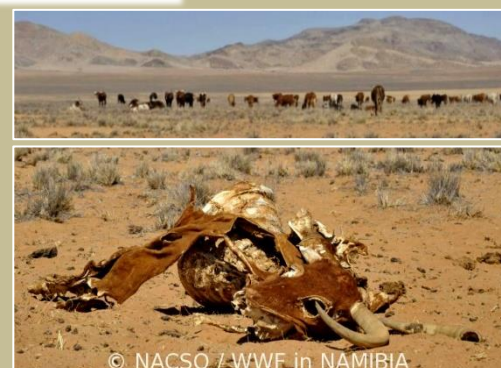
Growing season

Difference from average



Zones

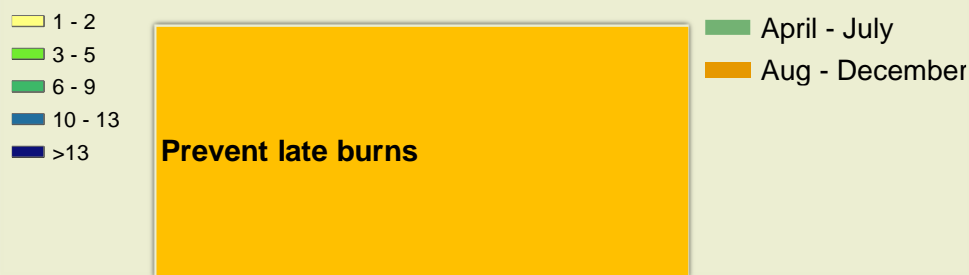
- 1) Settlement & Cropping Area
- 2a) Multiple Use: Livestock Priority
- 2b) Multiple Use: Hunting Priority
- 2c) Multiple Use: Tourism Priority
- 2d) Multiple Use: Mining Priority
- 3a) Exclusive Wildlife: All Utilisation
- 3b) Exclusive Wildlife: Trophy Hunting
- 3c) Exclusive Wildlife: Tourism
- 3d) Exclusive Wildlife: No Disturbance
- 4) Forest



Fire management

Burns between 2000 and 2022

When and where it burnt in 2022

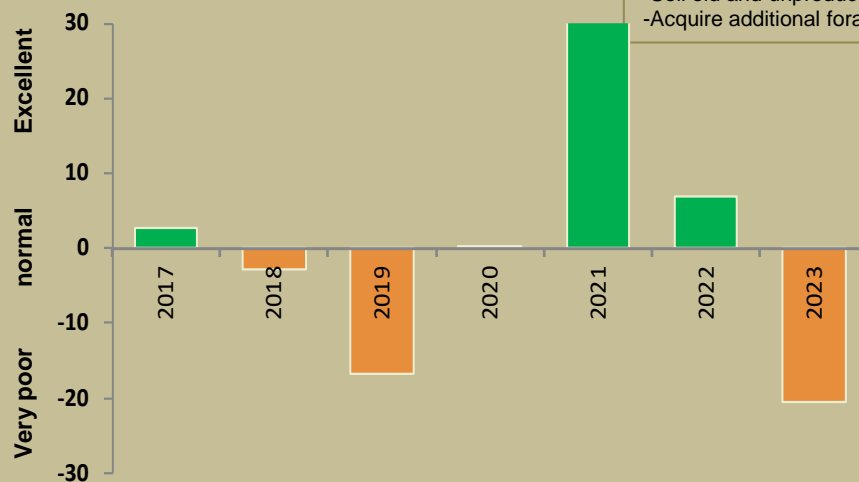


Forage availability

During the growing season enough forage must be produced to sustain livestock and game until the next rainy season

Management Options

- Do nothing
- Buy more animals
- Move animals to better grazing
- Sell old and unproductive animals
- Acquire additional forage



Below normal forage availability - Enough for livestock and game?



Climate and vegetation patterns assist in our understanding of the status of wildlife and livestock in the conservancy for the effective management of these resources.