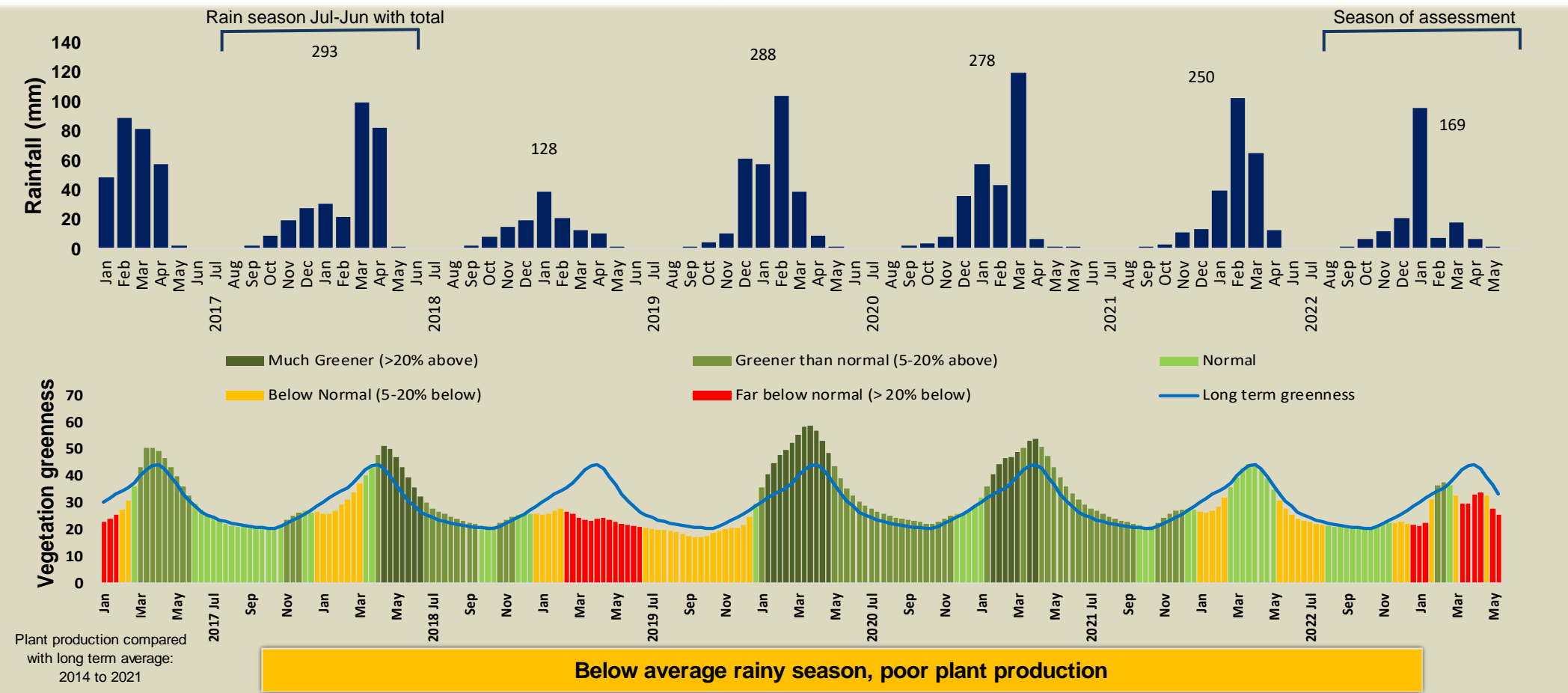


Iipumbu ya Tshilongo Climate and Vegetation Report



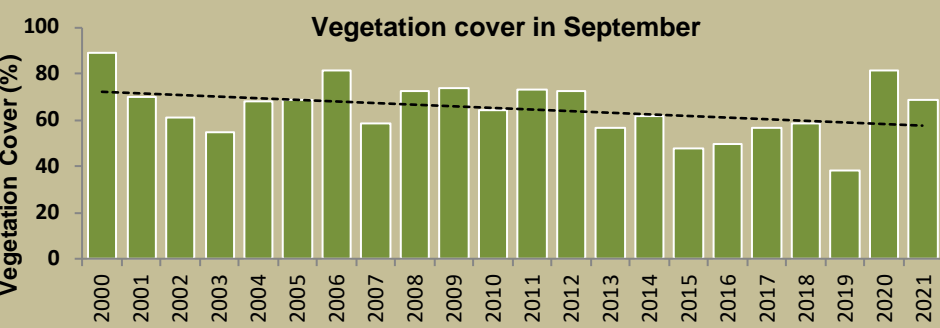
Adapting in response to the current environmental conditions ...

Seasonal trends in rainfall and vegetation (2022 / 2023 Season)



Vegetation cover trend (2000 - 2021)

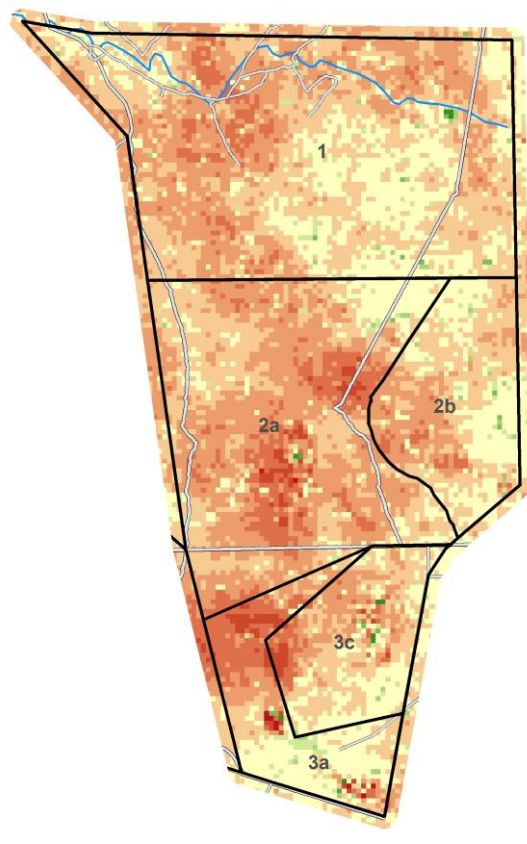
High vegetation cover is good because more rainwater is prevented from running off, causing less erosion. Also, the soil is shaded leading to a decrease in soil temperature and evaporation.



Plant cover is decreasing - Why?



Vegetation productivity (February to April) 2023



- ### Growing season
- Zones**
- 1) Settlement & Cropping Area
 - 2a) Multiple Use: Livestock Priority
 - 2b) Multiple Use: Hunting Priority
 - 2c) Multiple Use: Tourism Priority
 - 2d) Multiple Use: Mining Priority
 - 3a) Exclusive Wildlife: All Utilisation
 - 3b) Exclusive Wildlife: Trophy Hunting
 - 3c) Exclusive Wildlife: Tourism
 - 3d) Exclusive Wildlife: No Disturbance
 - 4) Forest

Fire management

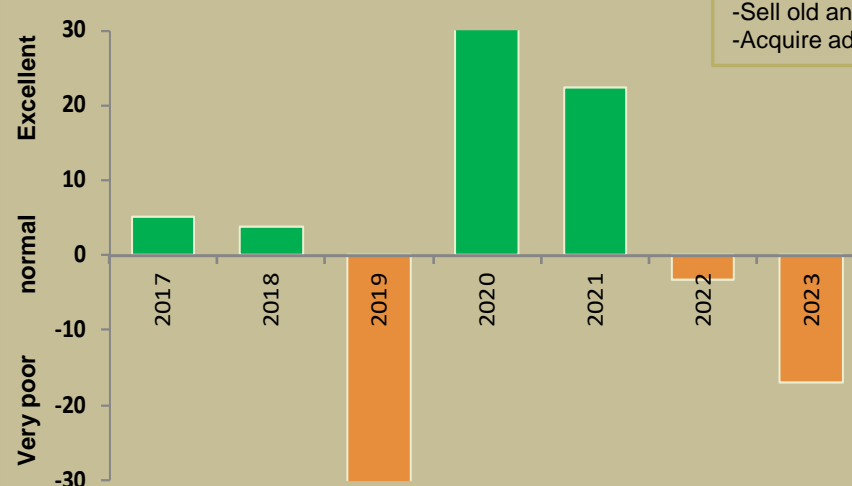
Burns between 2000 and 2022 When and where it burnt in 2022

No fire monitoring



Forage availability

During the growing season enough forage must be produced to sustain livestock and game until the next rainy season



Management Options

- Do nothing
- Buy more animals
- Move animals to better grazing
- Sell old and unproductive animals
- Acquire additional forage

Below normal forage availability - Enough for livestock and game?



Climate and vegetation patterns assist in our understanding of the status of wildlife and livestock in the conservancy for the effective management of these resources.