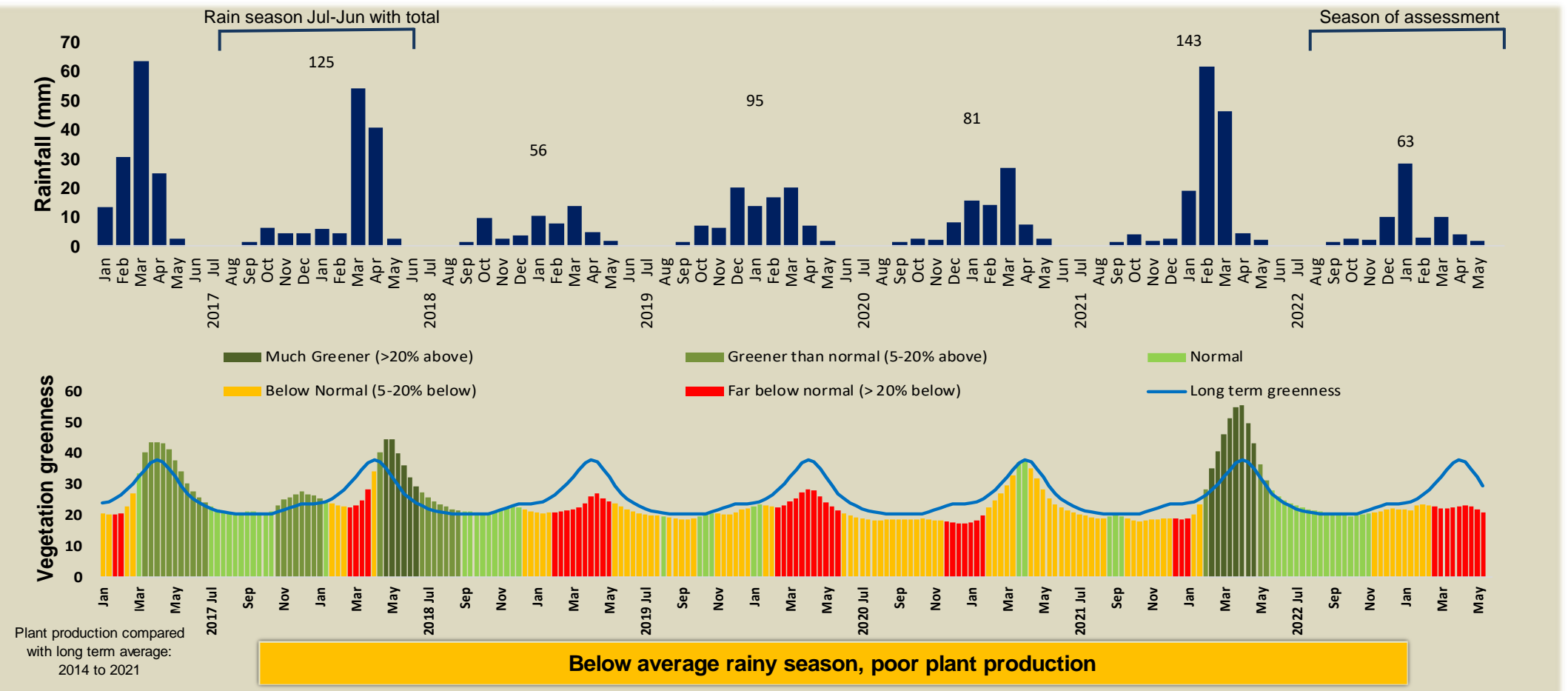




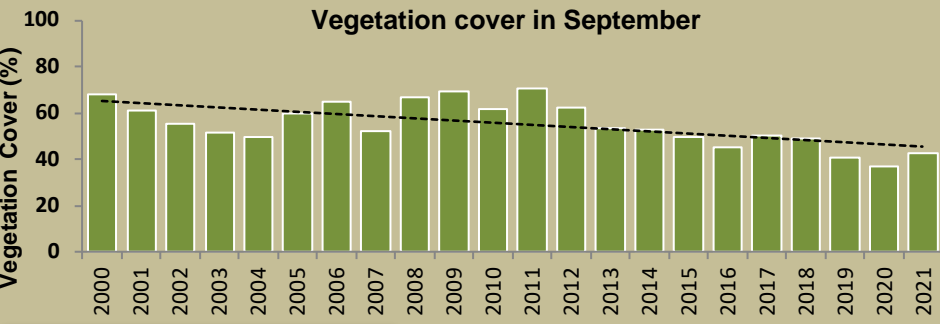
## Adapting in response to the current environmental conditions ...

### Seasonal trends in rainfall and vegetation (2022 / 2023 Season)



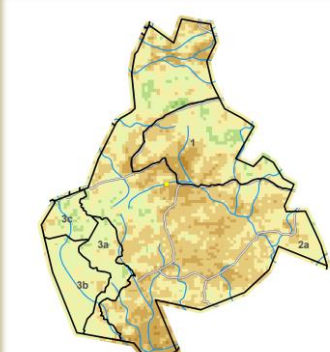
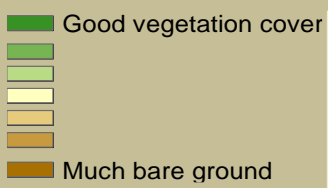
### Vegetation cover trend (2000 - 2021)

High vegetation cover is good because more rainwater is prevented from running off, causing less erosion. Also, the soil is shaded leading to a decrease in soil temperature and evaporation.

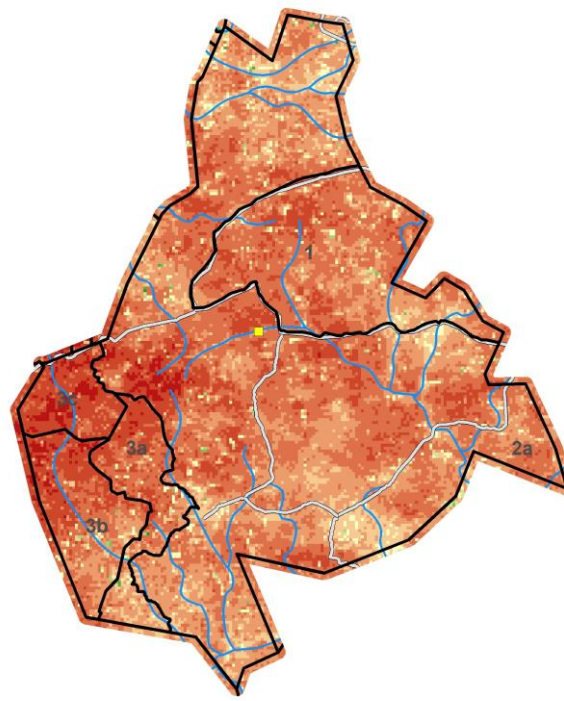


**Plant cover is decreasing - Why?**

#### Vegetation cover : 2021



### Vegetation productivity (February to April) 2023

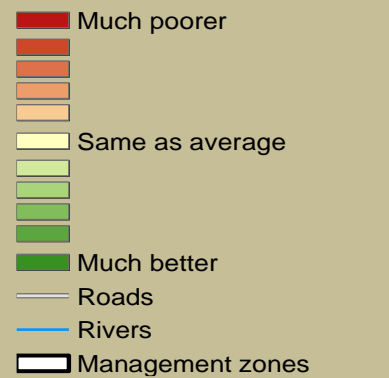


#### Growing season

##### Zones

- 1) Settlement & Cropping Area
- 2a) Multiple Use: Livestock Priority
- 2b) Multiple Use: Hunting Priority
- 2c) Multiple Use: Tourism Priority
- 2d) Multiple Use: Mining Priority
- 3a) Exclusive Wildlife: All Utilisation
- 3b) Exclusive Wildlife: Trophy Hunting
- 3c) Exclusive Wildlife: Tourism
- 3d) Exclusive Wildlife: No Disturbance
- 4) Forest

##### Difference from average



### Fire management

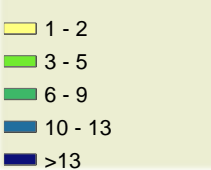
#### Burns between 2000 and 2022

#### When and where it burnt in 2022

#### No fire monitoring



#### Times burned



Apr-Jul: 6.2 sq.km, 0.2 %

Aug-Dec: 8 sq.km, 0.2 %

**Prevent late burns next season**

#### Burned area

April - July

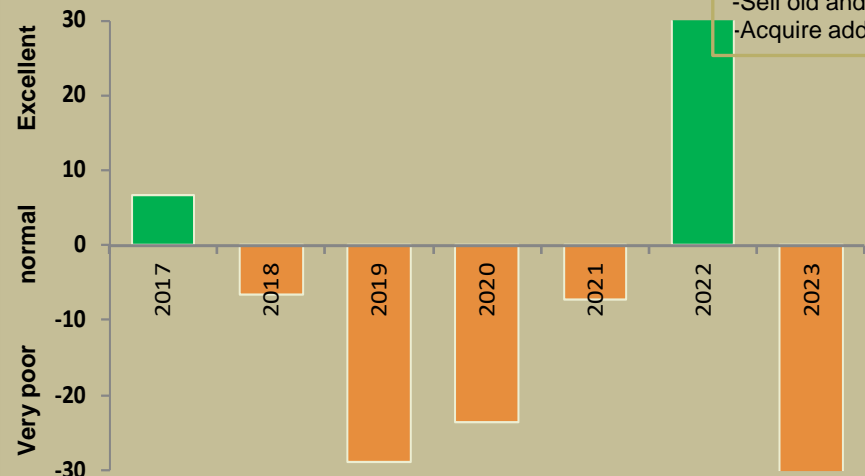
Aug - December

### Forage availability

During the growing season enough forage must be produced to sustain livestock and game until the next rainy season

#### Management Options

- Do nothing
- Buy more animals
- Move animals to better grazing
- Sell old and unproductive animals
- Acquire additional forage



**Far below normal forage availability - Enough for livestock and game?**



Climate and vegetation patterns assist in our understanding of the status of wildlife and livestock in the conservancy for the effective management of these resources.