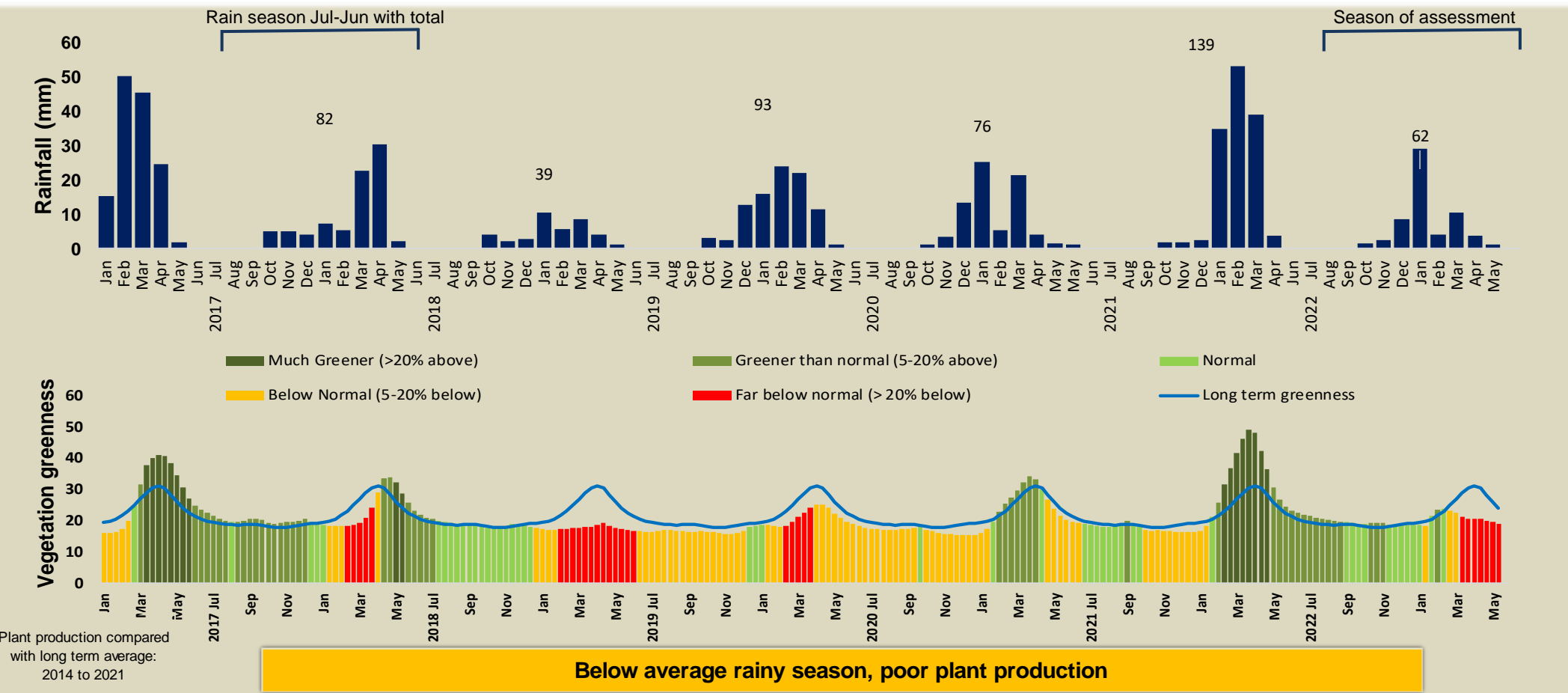




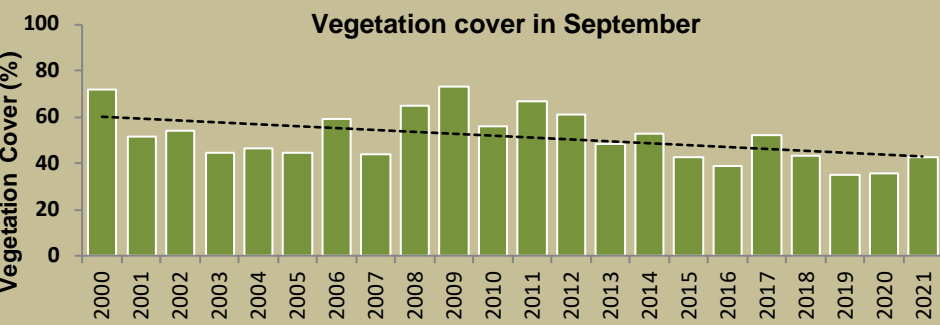
Adapting in response to the current environmental conditions ...

## Seasonal trends in rainfall and vegetation (2022 / 2023 Season)



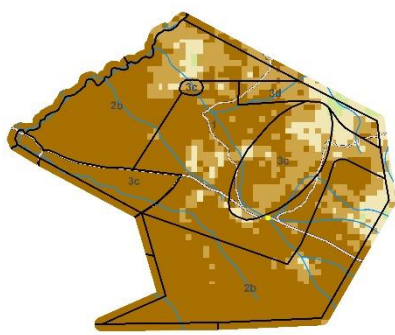
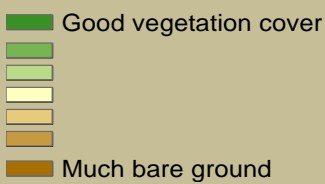
## Vegetation cover trend (2000 - 2021)

High vegetation cover is good because more rainwater is prevented from running off, causing less erosion. Also, the soil is shaded leading to a decrease in soil temperature and evaporation.



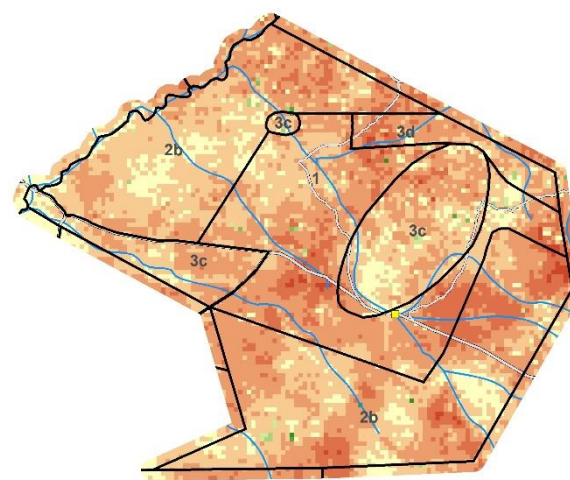
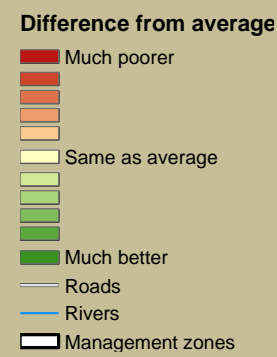
Plant cover is decreasing - Why?

Vegetation cover : 2021



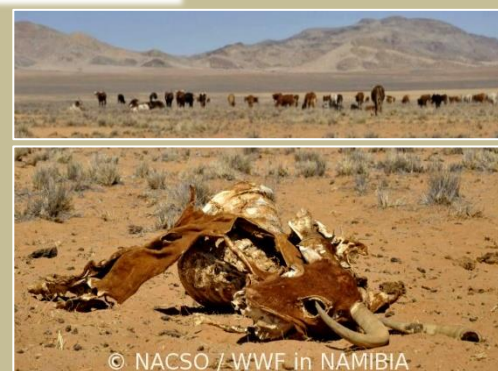
## Vegetation productivity (February to April) 2023

Growing season



### Zones

- Settlement & Cropping Area
- Multiple Use: Livestock Priority
- Multiple Use: Hunting Priority
- Multiple Use: Tourism Priority
- Multiple Use: Mining Priority
- Exclusive Wildlife: All Utilisation
- Exclusive Wildlife: Trophy Hunting
- Exclusive Wildlife: Tourism
- Exclusive Wildlife: No Disturbance
- Forest



## Fire management

Burns between 2000 and 2022

When and where it burnt in 2022

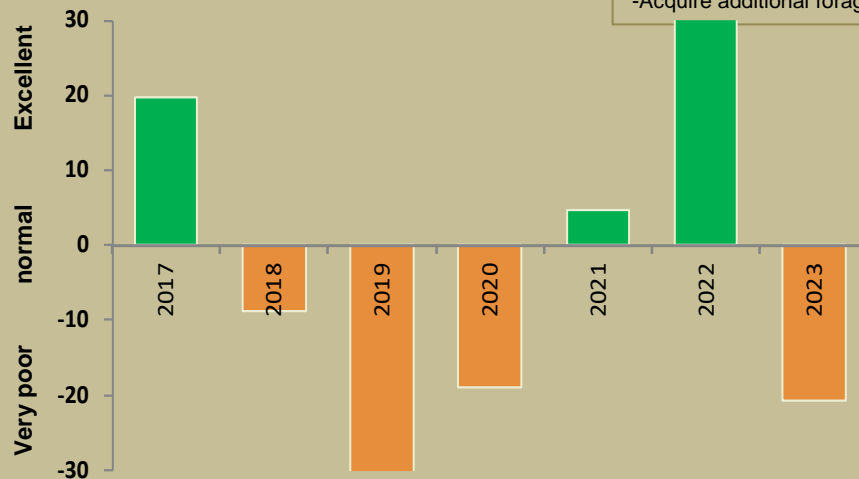


## Forage availability

During the growing season enough forage must be produced to sustain livestock and game until the next rainy season

Management Options

- Do nothing
- Buy more animals
- Move animals to better grazing
- Sell old and unproductive animals
- Acquire additional forage



Below normal forage availability - Enough for livestock and game?



Climate and vegetation patterns assist in our understanding of the status of wildlife and livestock in the conservancy for the effective management of these resources.