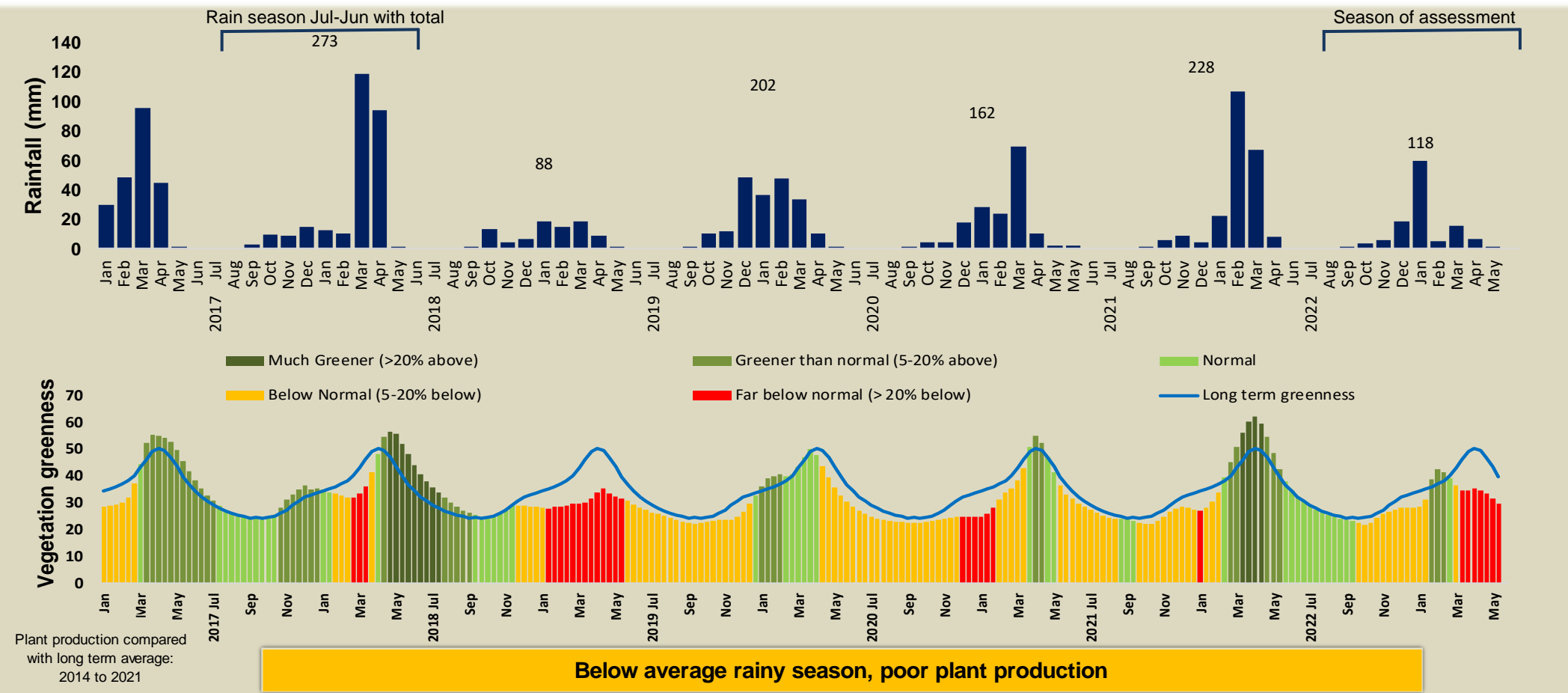




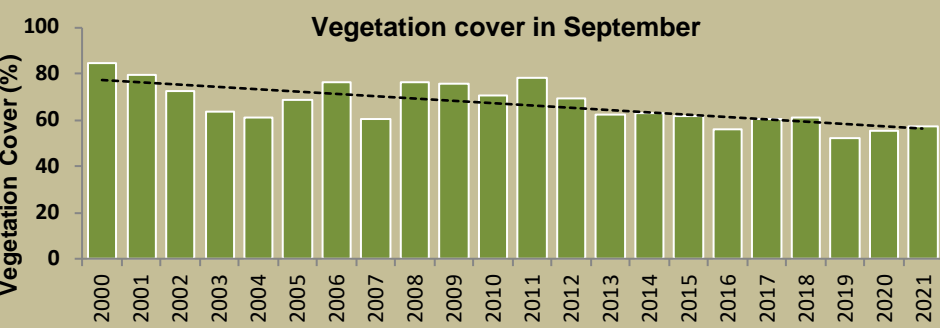
Adapting in response to the current environmental conditions ...

Seasonal trends in rainfall and vegetation (2022 / 2023 Season)



Vegetation cover trend (2000 - 2021)

High vegetation cover is good because more rainwater is prevented from running off, causing less erosion. Also, the soil is shaded leading to a decrease in soil temperature and evaporation.



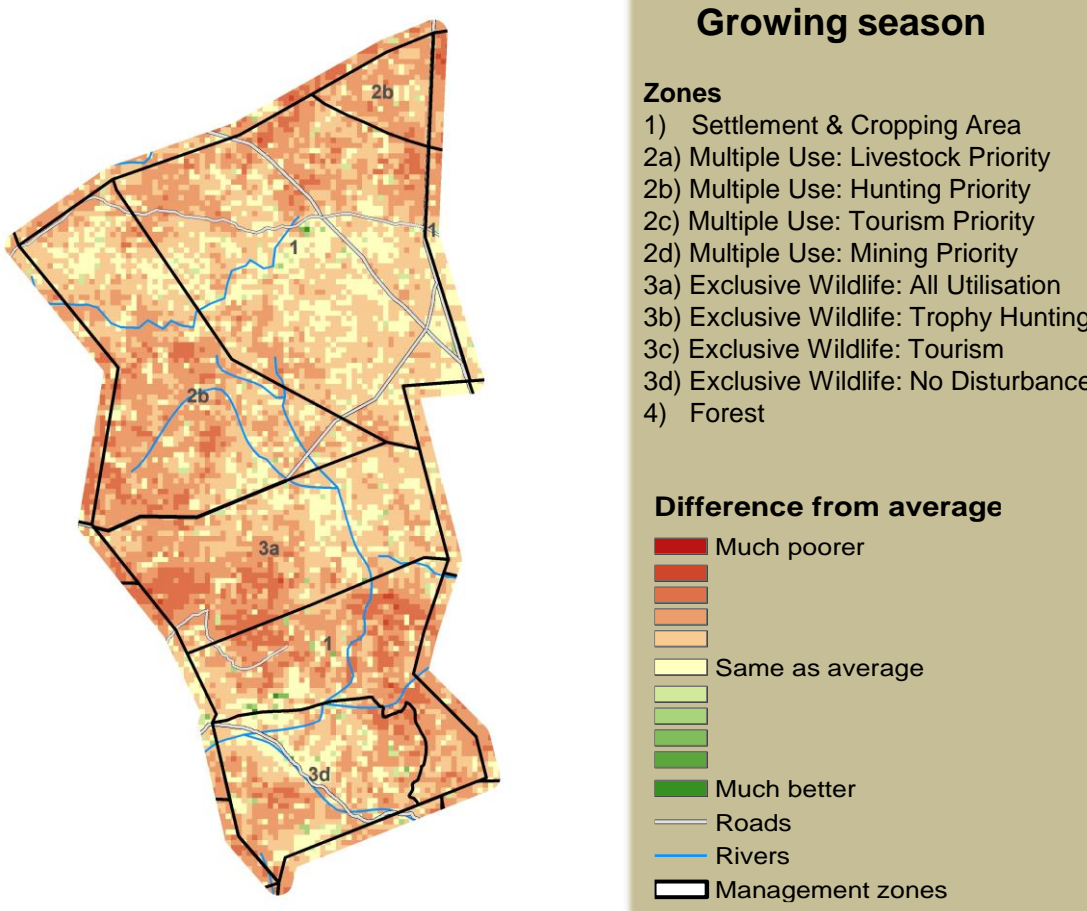
Plant cover is decreasing - Why?

Vegetation cover : 2021

- Good vegetation cover
- Much bare ground

NACSO/WWF in Namibia

Vegetation productivity (February to April) 2023



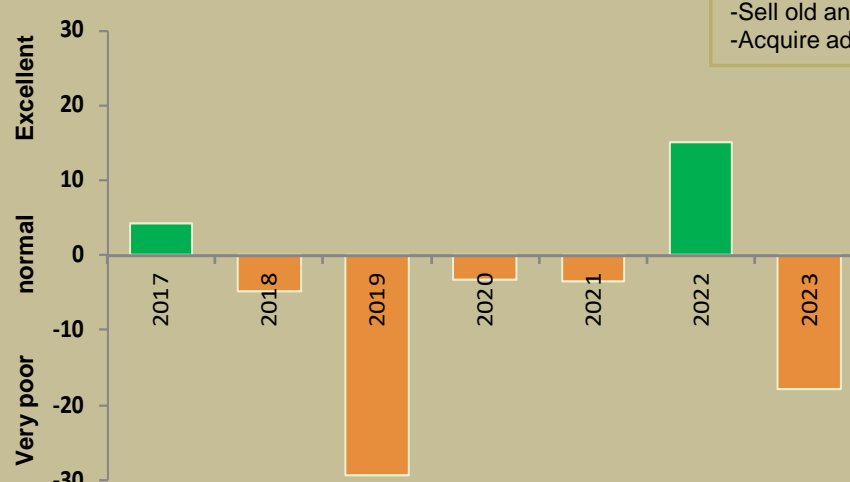
Fire management

Burns between 2000 and 2022 When and where it burnt in 2022



Forage availability

During the growing season enough forage must be produced to sustain livestock and game until the next rainy season



Management Options

- Do nothing
- Buy more animals
- Move animals to better grazing
- Sell old and unproductive animals
- Acquire additional forage

Below normal forage availability - Enough for livestock and game?

© NACSO / WWF in NAMIBIA T. Robertson

Climate and vegetation patterns assist in our understanding of the status of wildlife and livestock in the conservancy for the effective management of these resources.