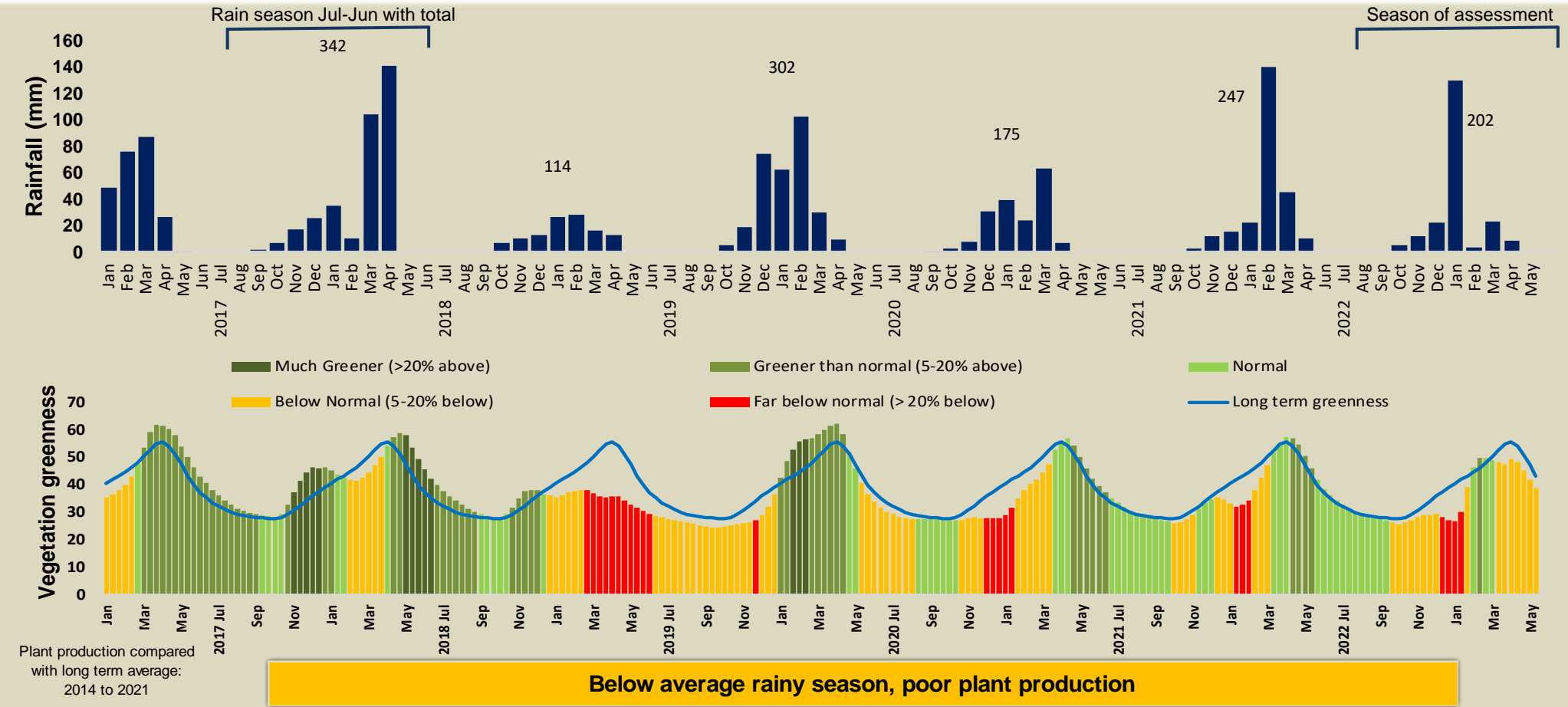


# Uukolonkadhi Ruacana Climate and Vegetation Report

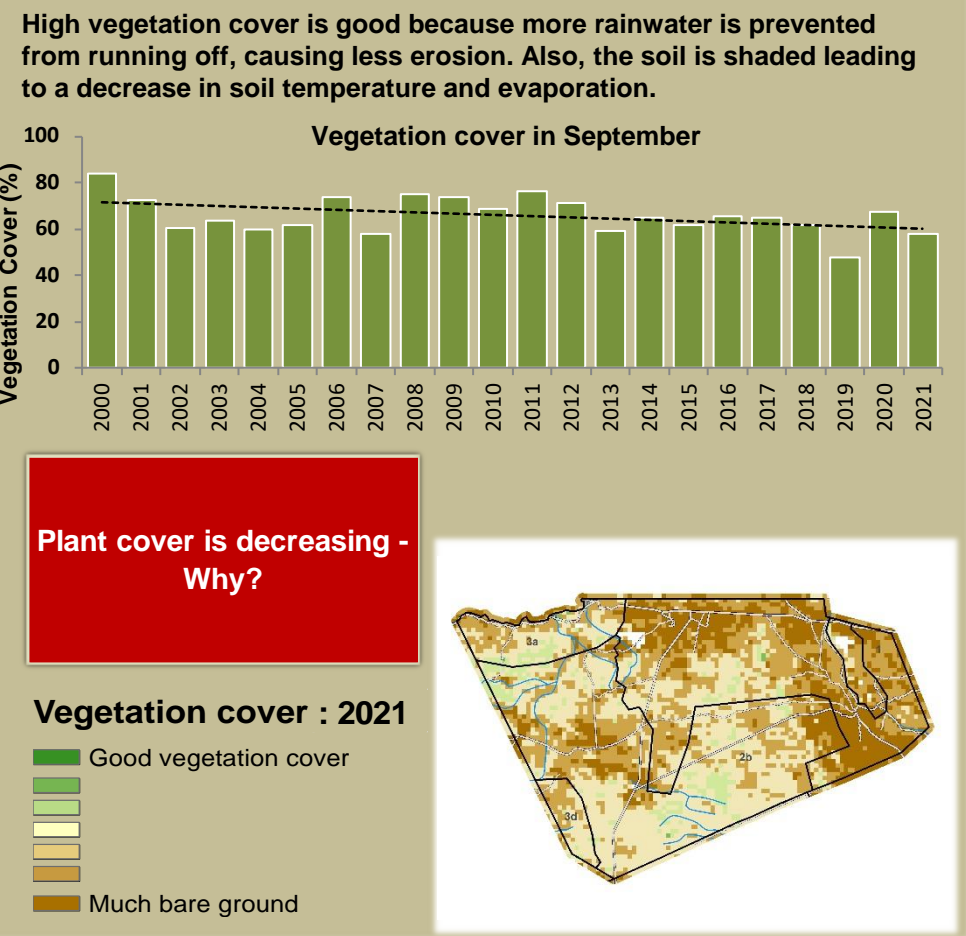


Adapting in response to the current environmental conditions ...

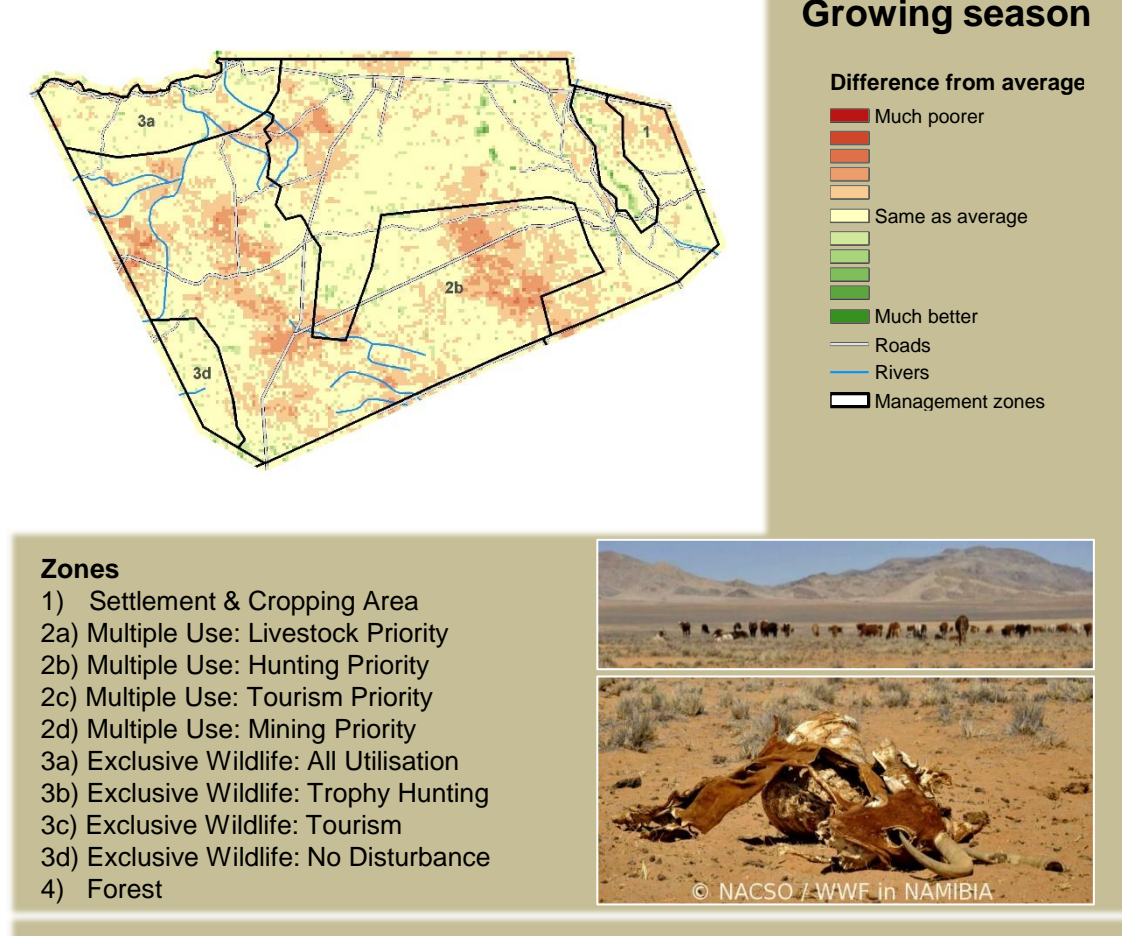
## Seasonal trends in rainfall and vegetation (2022 / 2023 Season)



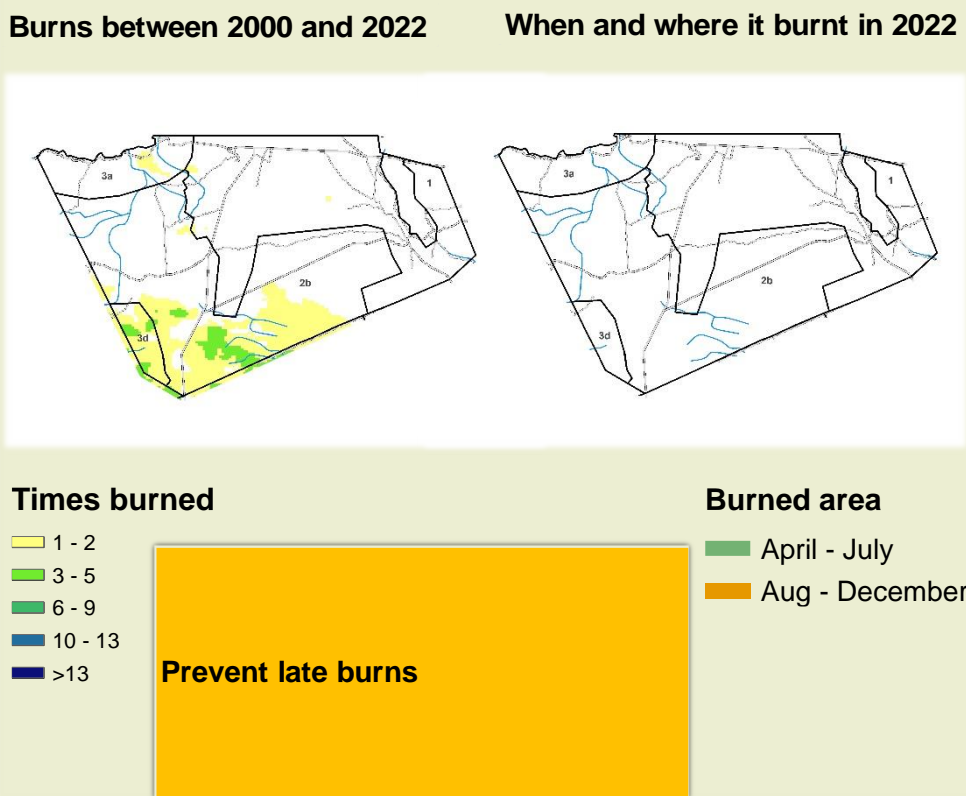
## Vegetation cover trend (2000 - 2021)



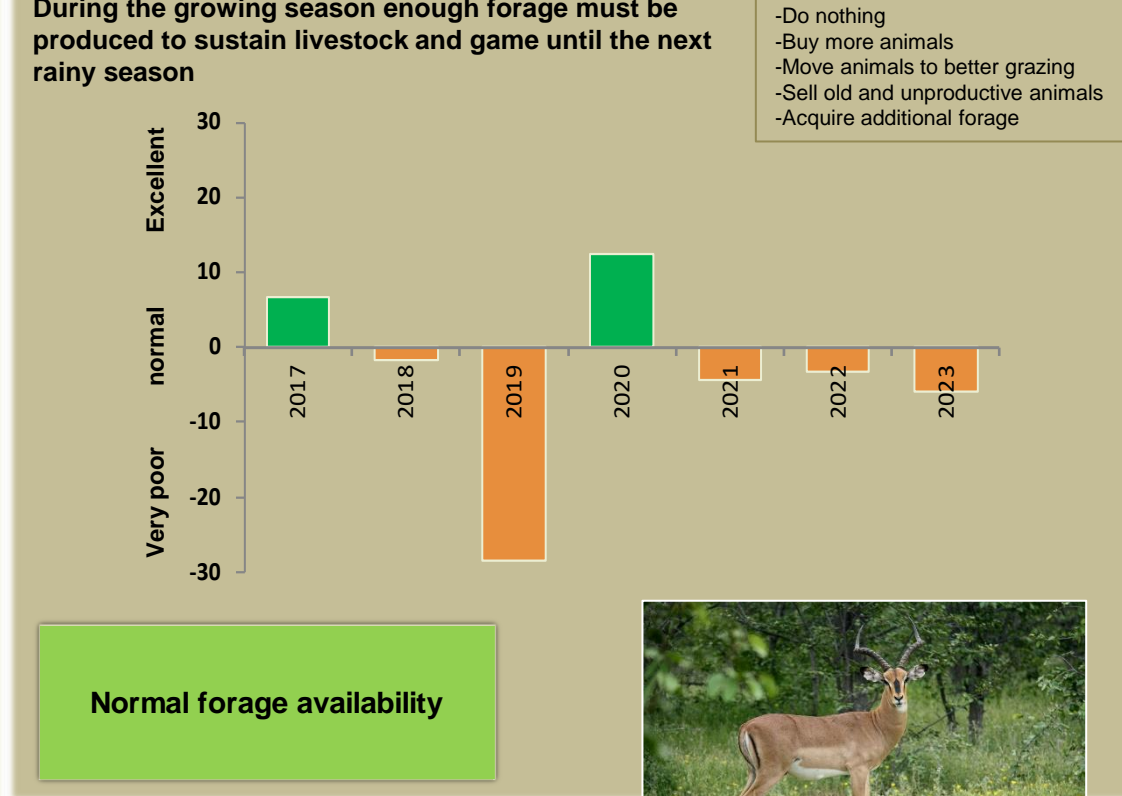
## Vegetation productivity (February to April) 2023



## Fire management



## Forage availability



Climate and vegetation patterns assist in our understanding of the status of wildlife and livestock in the conservancy for the effective management of these resources.