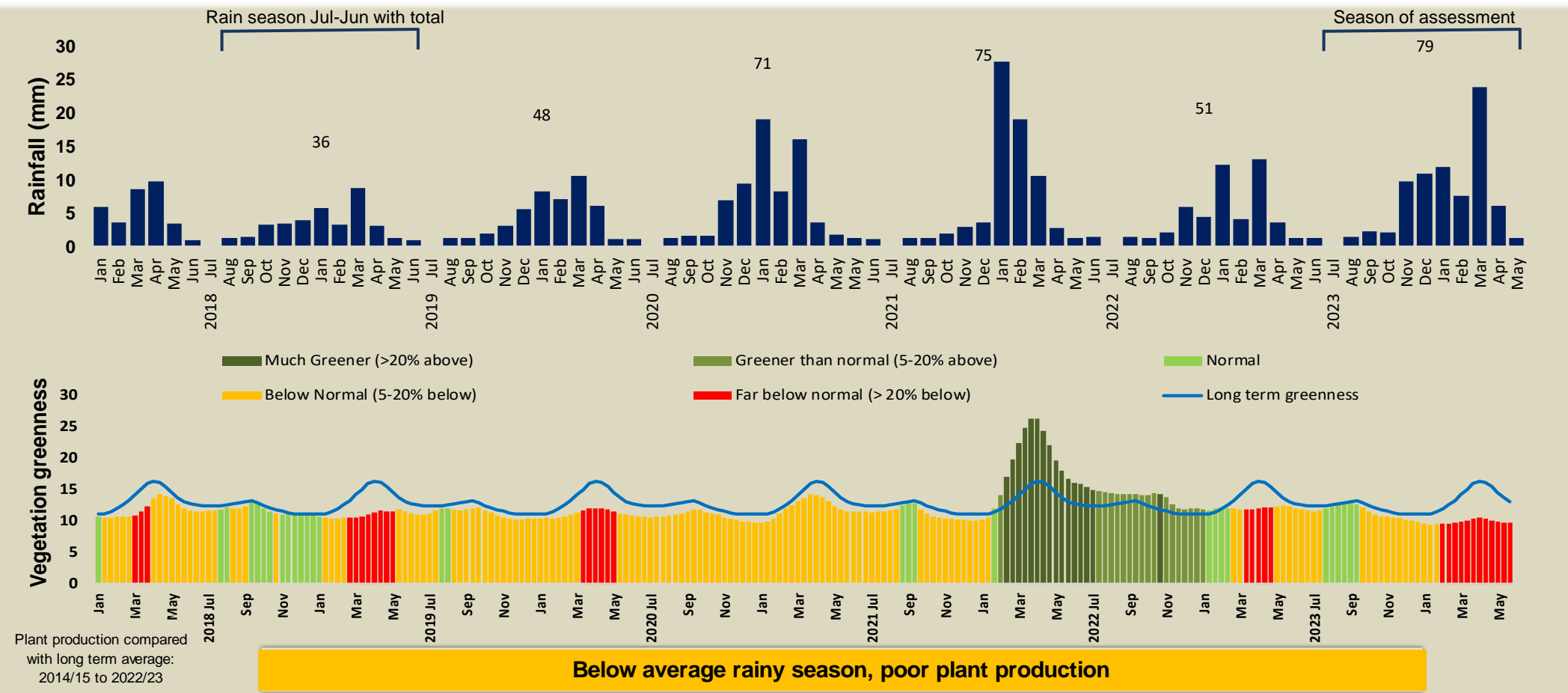




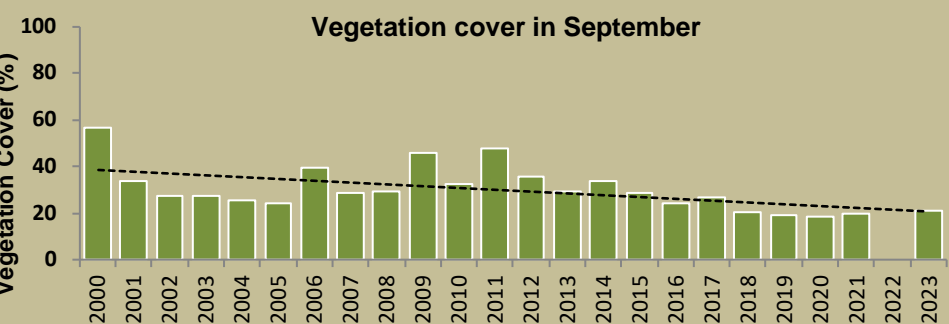
Adapting in response to the current environmental conditions ...

## Seasonal trends in rainfall and vegetation (2023 / 2024 Season)



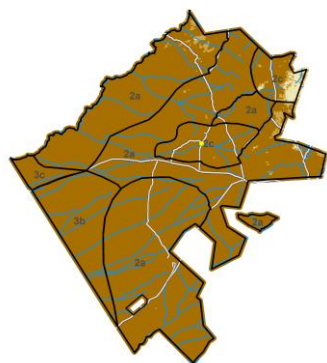
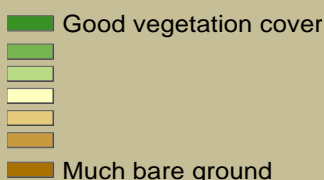
## Vegetation cover trend (2000 - 2023)

High vegetation cover is good because more rainwater is prevented from running off, causing less erosion. Also, the soil is shaded leading to a decrease in soil temperature and evaporation.



**Plant cover is decreasing - Why?**

### Vegetation cover : 2023

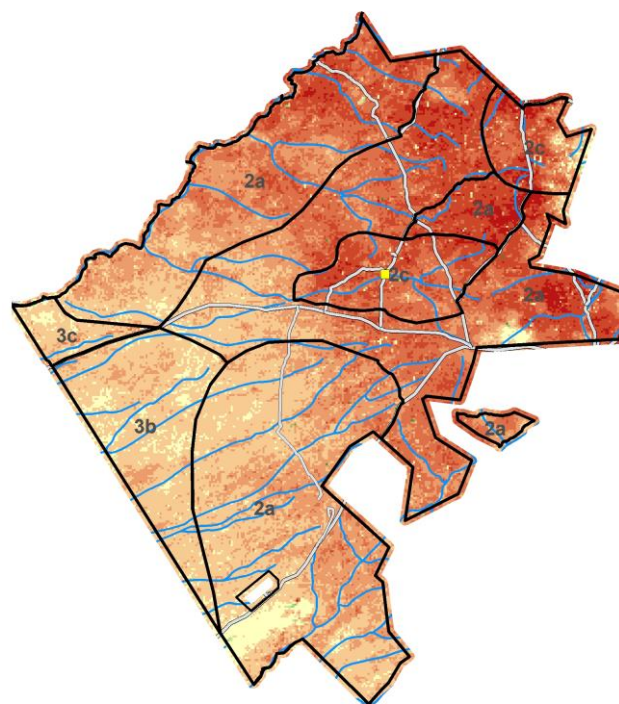


## Vegetation productivity (February to April) 2024

### Growing season

- Zones**
- 1) Settlement & Cropping Area
  - 2a) Multiple Use: Livestock Priority
  - 2b) Multiple Use: Hunting Priority
  - 2c) Multiple Use: Tourism Priority
  - 2d) Multiple Use: Mining Priority
  - 3a) Exclusive Wildlife: All Utilisation
  - 3b) Exclusive Wildlife: Trophy Hunting
  - 3c) Exclusive Wildlife: Tourism
  - 3d) Exclusive Wildlife: No Disturbance
  - 4) Forest

### Difference from average



## Fire management

Burns between 2000 and 2023      When and where it burnt in 2023

No fire monitoring

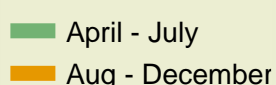


### Times burned



**Prevent late burns**

### Burned area

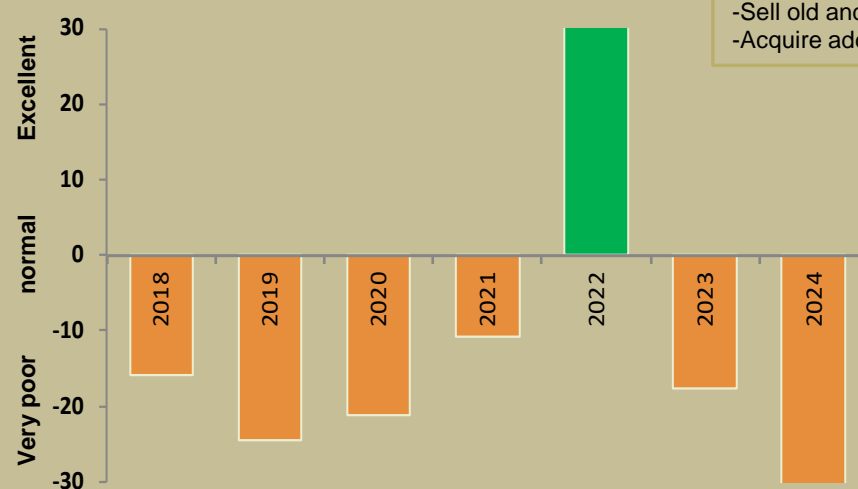


## Forage availability

During the growing season enough forage must be produced to sustain livestock and game until the next rainy season

### Management Options

- Do nothing
- Buy more animals
- Move animals to better grazing
- Sell old and unproductive animals
- Acquire additional forage



**Far below normal forage availability - Enough for livestock and game?**



Climate and vegetation patterns assist in our understanding of the status of wildlife and livestock in the conservancy for the effective management of these resources.