

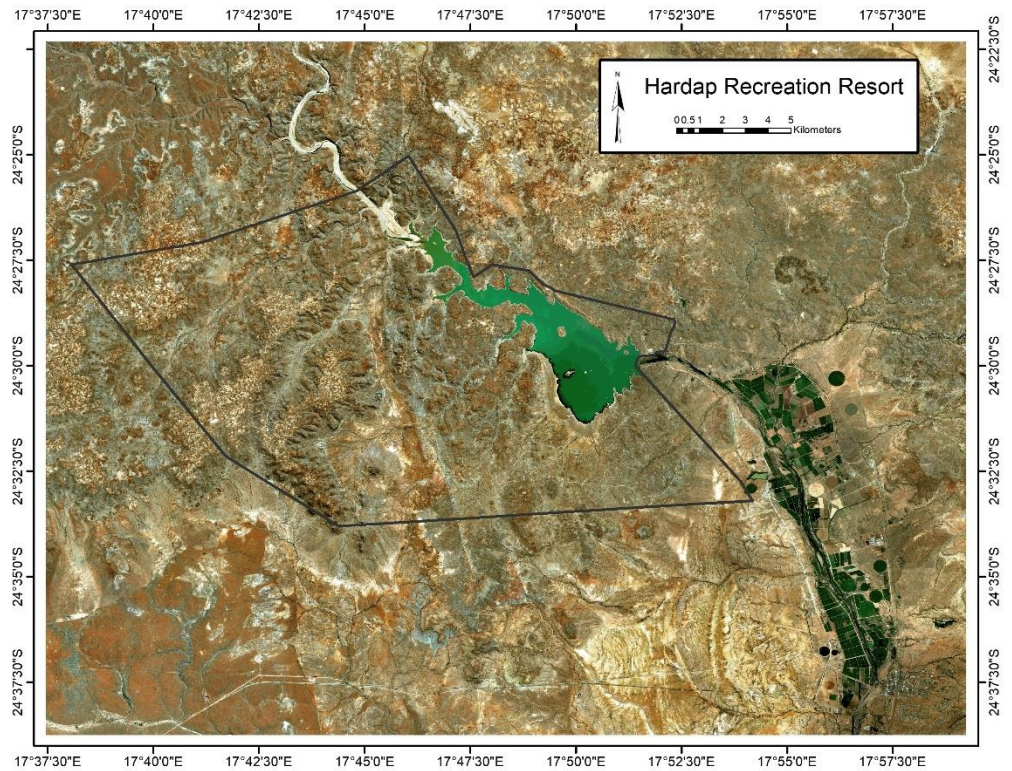
GAME COUNTS IN HARDAP GAME PARK

July 2018

Total Population Estimates

Species	Estimate	Lower 95 % CL	Upper 95% CL	Model
Gemsbok	780	565	1,070	U
Kudu	110	50	230	HN
Ostrich	220	140	360	HN
Springbok	2,190	1,305	3,680	U
Hartmann's Zebra	-	-	-	U

Estimates were calculated using DISTANCE. Numbers are rounded. Model selection: U = uniform key; HN = half normal



Total numbers seen per year

Species	2005	2006	2007	2008	2009	2010	2011	2012	2013	2014	2015	2016	2017	2018
Baboon					16	17		7	17	62		84	17	3
Gemsbok	47	129	77	113	237	205	178	225	393	206	603	480	427	248
Jackal	3	6	3	8	7	2	3	11	4	5	4	10	7	4
Klipspringer		2												
Kudu	66	55	34	36	56	18	40	46	72	19	5	22	27	25
Ostrich	78	160	82	40	48	44	63	51	82	27	93	49	62	53
Springbok	379	606	322	372	390	581	676	454	351	222	234	402	455	445
Steenbok	16	4	4	4	5	2	4		3	4	5	6	1	2
Warthog	3	6	9	5	6	4	2	29	22	14	18	11	6	4
Hartmann's Zebra	6	12	18	16	43	26	108	38	93	14	50	156	80	

Animals seen in this count:

Total Route km	87
Total area (km ²)	238
Number of routes	2

Species	Total	Route 1	Route 2
Baboon	3	3	
Gemsbok	248	127	121
Jackal	4	2	2
Klipspringer	0	0	0
Kudu	25	10	15
Ostrich	53	41	12
Springbok	445	190	255
Steenbok	2	1	1
Warthog	4	4	0
Hartmann's Zebra	0	0	0

Trends: Number of animals per 100km

