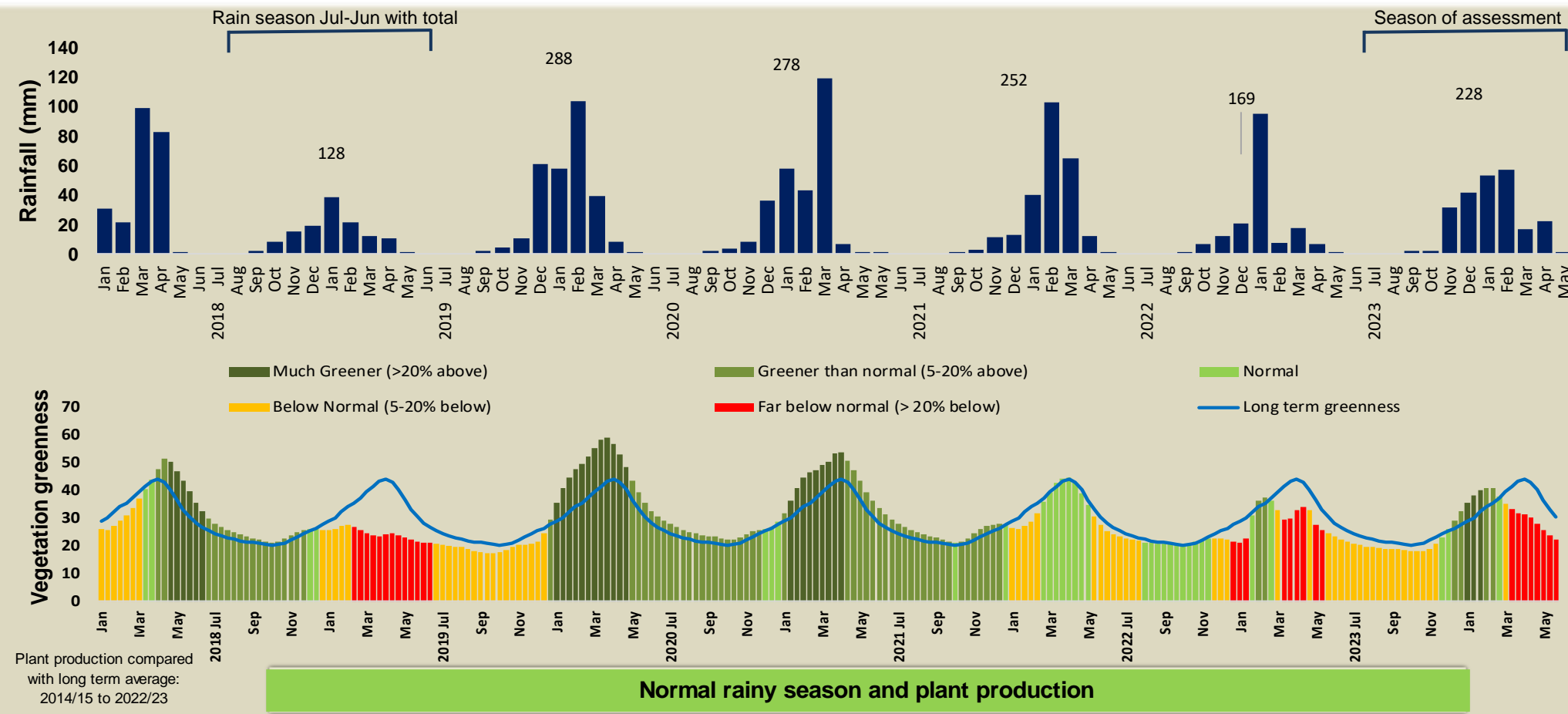


lipumbu ya Tshilongo Climate and Vegetation Report



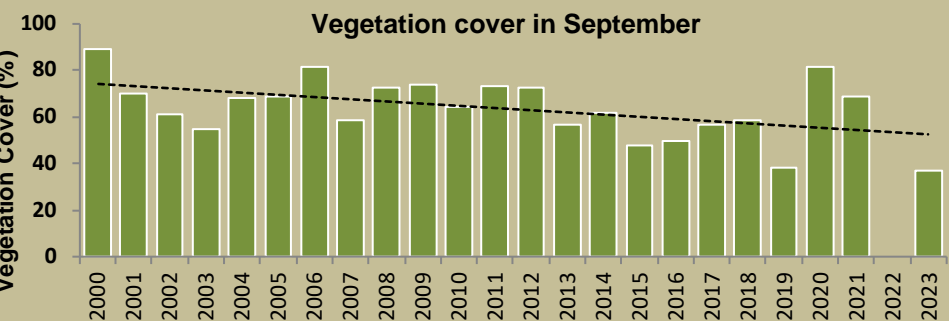
Adapting in response to the current environmental conditions ...

Seasonal trends in rainfall and vegetation (2023 / 2024 Season)



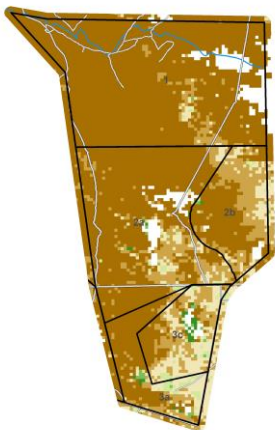
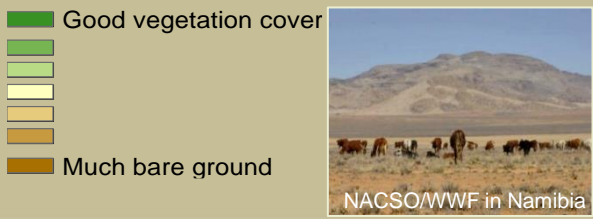
Vegetation cover trend (2000 - 2023)

High vegetation cover is good because more rainwater is prevented from running off, causing less erosion. Also, the soil is shaded leading to a decrease in soil temperature and evaporation.



Plant cover is decreasing - Why?

Vegetation cover : 2023

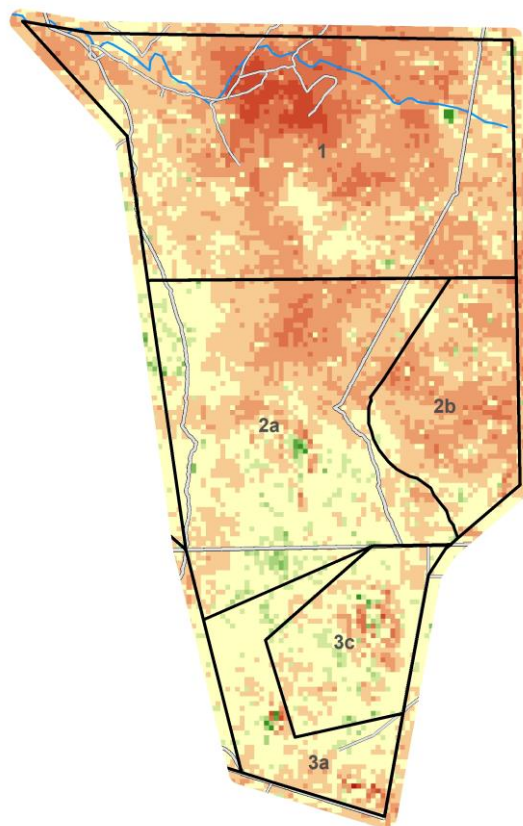


Vegetation productivity (February to April) 2024

Growing season

- Zones**
- 1) Settlement & Cropping Area
 - 2a) Multiple Use: Livestock Priority
 - 2b) Multiple Use: Hunting Priority
 - 2c) Multiple Use: Tourism Priority
 - 2d) Multiple Use: Mining Priority
 - 3a) Exclusive Wildlife: All Utilisation
 - 3b) Exclusive Wildlife: Trophy Hunting
 - 3c) Exclusive Wildlife: Tourism
 - 3d) Exclusive Wildlife: No Disturbance
 - 4) Forest

Difference from average



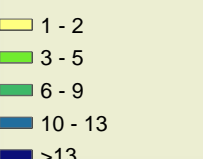
Fire management

Burns between 2000 and 2023 When and where it burnt in 2023

No fire monitoring

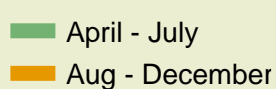


Times burned



Prevent late burns

Burned area

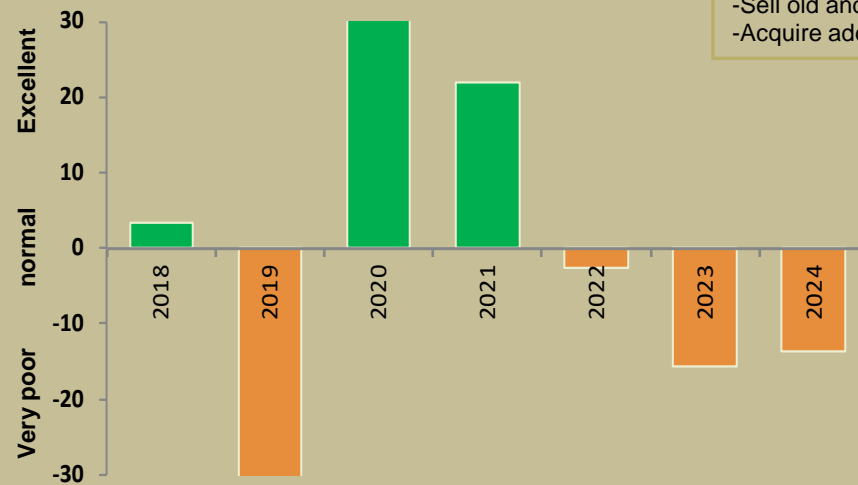


Forage availability

During the growing season enough forage must be produced to sustain livestock and game until the next rainy season

Management Options

- Do nothing
- Buy more animals
- Move animals to better grazing
- Sell old and unproductive animals
- Acquire additional forage



Below normal forage availability - Enough for livestock and game?



Climate and vegetation patterns assist in our understanding of the status of wildlife and livestock in the conservancy for the effective management of these resources.