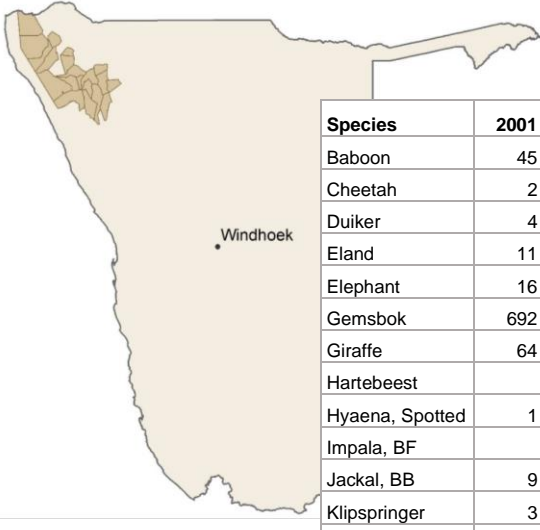


GAME COUNTS IN NORTH-WEST NAMIBIA

Conservancies north of the veterinary fence

May 2024

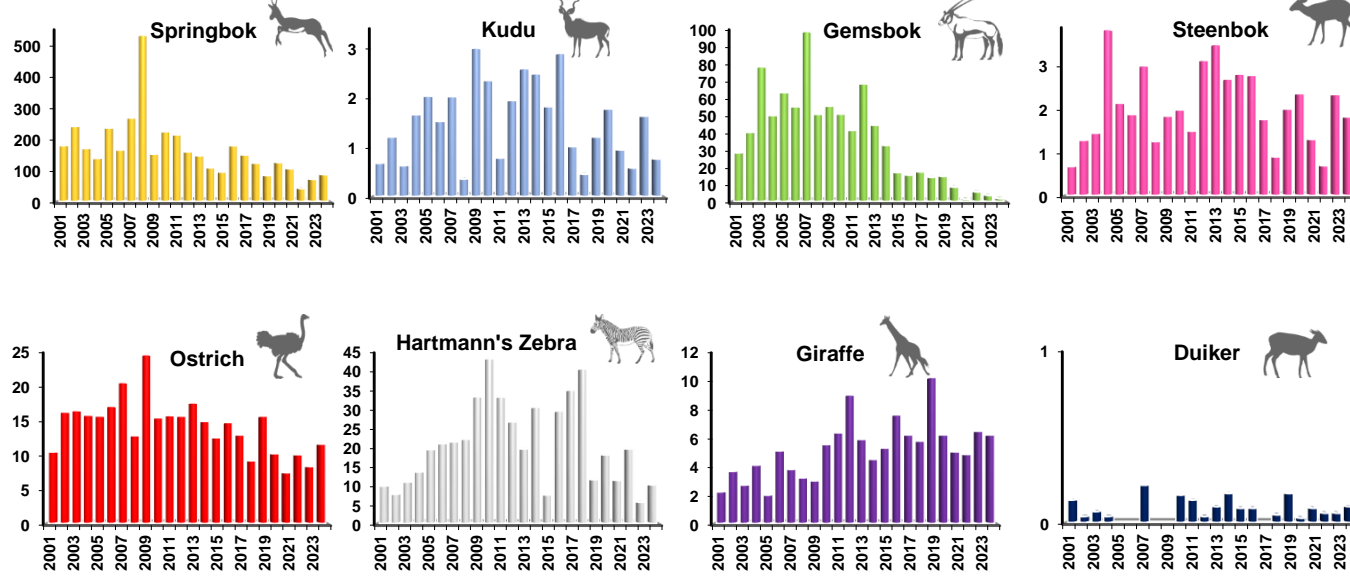


Total number of animals seen each year

Species	2001	2002	2003	2004	2005	2006	2007	2008	2009	2010	2011	2012	2013	2014	2015	2016	2017	2018	2019	2020	2021	2022	2023	2024	
Baboon	45	44	55	73	253	61	234	105	105	125	17	136	272	123	235	338	132	114	292	113	27	78	144	183	
Cheetah	2	1	7	2	10	1	1	4	3	1		3	2	1			3	1	2	5		1	1	2	
Duiker	4	1	2	1			6			5	4	1	3	6	3	3		2	6	1	3	2	2	3	
Eland	11						36	5	30		13	2		2		16	5	9	1	1					
Elephant	16	10	24	5	31	1	4	8	20	10	1	9	8	4	12	14	18	5	31	5	16	4	27	23	
Gemsbok	692	975	2,027	1,348	1,783	1,508	2,649	1,337	1,580	1,493	1,257	1,911	1,401	1,101	575	563	586	541	491	286	53	195	108	71	
Giraffe	64	89	75	111	56	140	99	85	86	163	182	252	186	152	178	256	209	218	337	205	166	149	203	219	
Hartebeest																									
Hyaena, Spotted	1						2						6	1		1		1			1	1	1	1	
Impala, BF				15						5	7		3	12	26	14	4	25	9	38	10	11	3	16	
Jackal, BB	9	26	25	45	28	42	50	19	35	31	28	26	41	35	24	22	35	18	10	29	18	15	9	12	
Klipspringer	3	5	6	9		3	5		15	3	2	8	4	11		5		2		2			2	8	
Kudu	20	30	18	46	61	43	54	10	88	71	23	56	84	86	63	102	35	18	41	60	32	20	55	28	
Ostrich	265	394	413	427	438	469	534	339	702	454	451	439	555	502	422	508	435	347	517	337	246	321	270	414	
Springbok	5,004	5,823	4,593	3,748	6,705	4,527	6,939	13,999	4,342	6,569	6,136	4,463	4,640	3,662	3,210	6,051	5,028	4,661	2,786	4,146	3,495	1,443	2,162	3,117	
Steenbok	20	32	41	115	64	53	80	34	54	60	44	90	113	93	97	101	61	35	68	80	44	22	79	68	
Warthog	5			2	1	2	6	2		3	2	5	10	1		3	2	3							
Zebra, H	283	189	302	367	568	576	558	585	950	1,271	970	748	619	1,028	256	1,059	1,177	1,529	382	596	377	658	188	364	

Count area: 3 million ha

Trends - Number of animals per 100km



Population Estimates

Species	Estimate	Lower 95% CL	Upper 95% CL
Gemsbok (HN)	944	435	2,050
Kudu (HN)	368	188	718
Ostrich (HN)	4,493	3,069	6,577
Springbok (HN)	51,406	36,194	73,009
Steenbok (HN)	5,769	3,604	9,237
Hartmann's Zebra (HN)	3,218	1,975	5,243

All above estimates are derived using DISTANCE analysis. This takes account of drop off in detection with distance from the transect line. They are conservative estimates as 35% of the count area is not sampled (due to inaccessibility) and is consequently assumed to hold no animals. Model selection: U = uniform key; HN = half normal

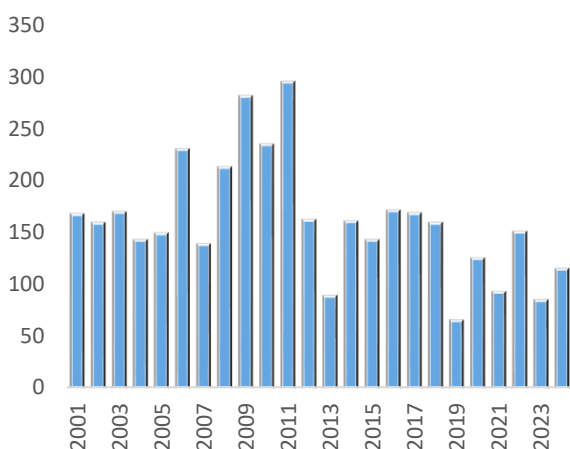
Animals seen during this count and estimates

Total	Anabeb	Ehi-Rovipuka	Etanga	Marienfluss	Okangundumba	Okondombo	Omatendeka	Ombujokangindi	Ongongo	Orupembe	Orupupa	Otjambangu	Otjikondavirongo	Otjiu-west	Otuzemba	Ozondundu	Puros	Sanitatas	Sesfontein		
Total Route km	4,692	241	491	102	355	184	235	654	199	88	363	267	64	173	101	176	145	339	194	321	
Total area (km2)	29,823	1,570	1,980	908	3,036	1,131	1,644	1,619	1,160	501	3,565	1,234	348	1,067	1,100	742	745	3,562	1,446	2,465	
No. of routes	85	5	6	4	6	3	4	5	4	5	7	4	2	4	2	4	3	6	4	7	
% Area excluded		53	28	21	28	29	16	48	15	65	7	63	0	58	78	26	55	31	28	42	
Species																					
Gemsbok	1 (8)			4 (71)		4 (56)	4 (37)			18 (468)		3 (39)					2 (39)	3 (39)	32 (361)		
Giraffe	34 (115)	26 (136)			1 (6)	14 (83)	21 (82)			23 (253)	4 (10)		9 (24)		1 (6)		54 (433)	18 (97)	14 (67)		
Kudu	3 (20)	2 (21)			5 (56)	5 (57)	3 (23)		3 (12)		2 (10)	1 (11)		1 (6)		2 (15)		1 (11)			
Ostrich	26 (168)	9 (90)	4 (54)	22 (314)	8 (88)	11 (124)	38 (283)	48 (560)	38 (145)	94 (1978)	6 (27)	7 (74)	9 (46)	12 (65)			31 (477)	38 (393)	13 (119)		
Springbok	425 (4,192)	164 (2,515)	11 (227)	205 (4,474)	27 (453)	104 (1,797)	860 (9,807)	194 (3,467)	47 (274)	495 (15,967)	3 (21)	180 (2,879)	19 (147)	17 (140)			132 (3,113)	99 (1,569)	135 (1,890)		
Steenbok		10 (925)			17 (1,719)	1 (105)	6 (413)	7 (755)		2 (389)	8 (333)	1 (97)	1 (47)		6 (587)	2 (135)		1 (96)	6 (507)		
Hartmann's Zebra	66 (339)	84 (670)				83 (746)	20 (119)		5 (16)	41 (688)		3 (25)	14 (57)		4 (34)	7 (41)	6 (74)	20 (165)	11 (81)		

Values without brackets are numbers of animals seen along transects. Values in brackets are estimates derived using the Effective Strip Width (ESW) for each species from Distance analysis. While totals will be similar in magnitude to the estimates presented top left, they will not be the same. Giraffe estimates have not been adjusted for drop-off in detectability.

Rainfall

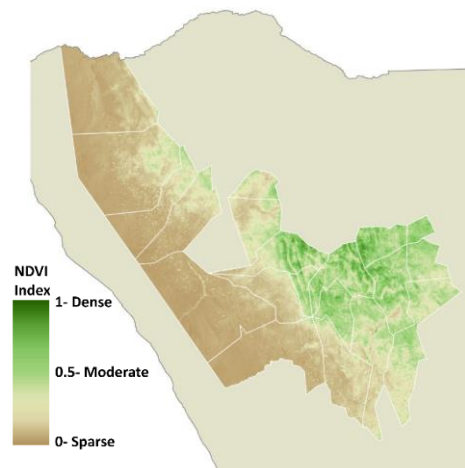
Average rainfall (mm)



The rainfall season is from July to June and values are an average for the whole area. The year represents the season immediately prior to the count.

Vegetation

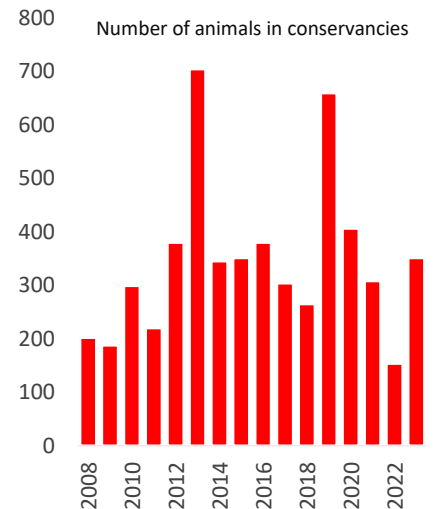
NDVI - percentage difference from long term mean



NDVI is a measure of the density of chlorophyll in vegetation cover. It can be used as an indicator of the amount of biomass available to wildlife. The map shows the NDVI status in the current year (Feb-Apr) and the trend indicates the average deviation of northern area conservancies from the long-term mean, in each year.

Mortalities

Number of animals in conservancies



Total number of carcasses from all species recorded in the Event Book