

GAME COUNTS IN NORTH-WEST NAMIBIA

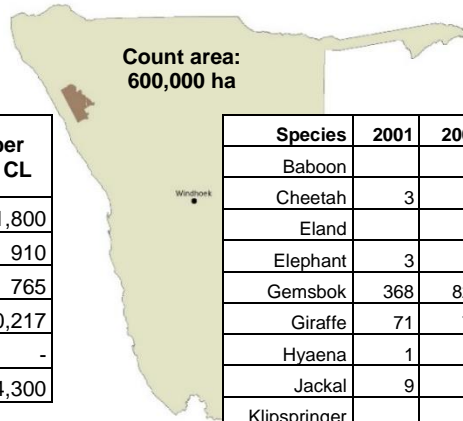
Palmwag and Etendeka concessions

June 2017

Total Population Estimates

Species	Population estimate	Lower 95% CL	Upper 95% CL
Gemsbok (U)	920	470	1,800
Kudu (HN)	290	90	910
Ostrich (U)	235	70	765
Springbok (HN)	7,820	3,025	20,217
Steenbok (HN)	-	-	-
Hartmann's Zebra (U)	2,100	1,030	4,300

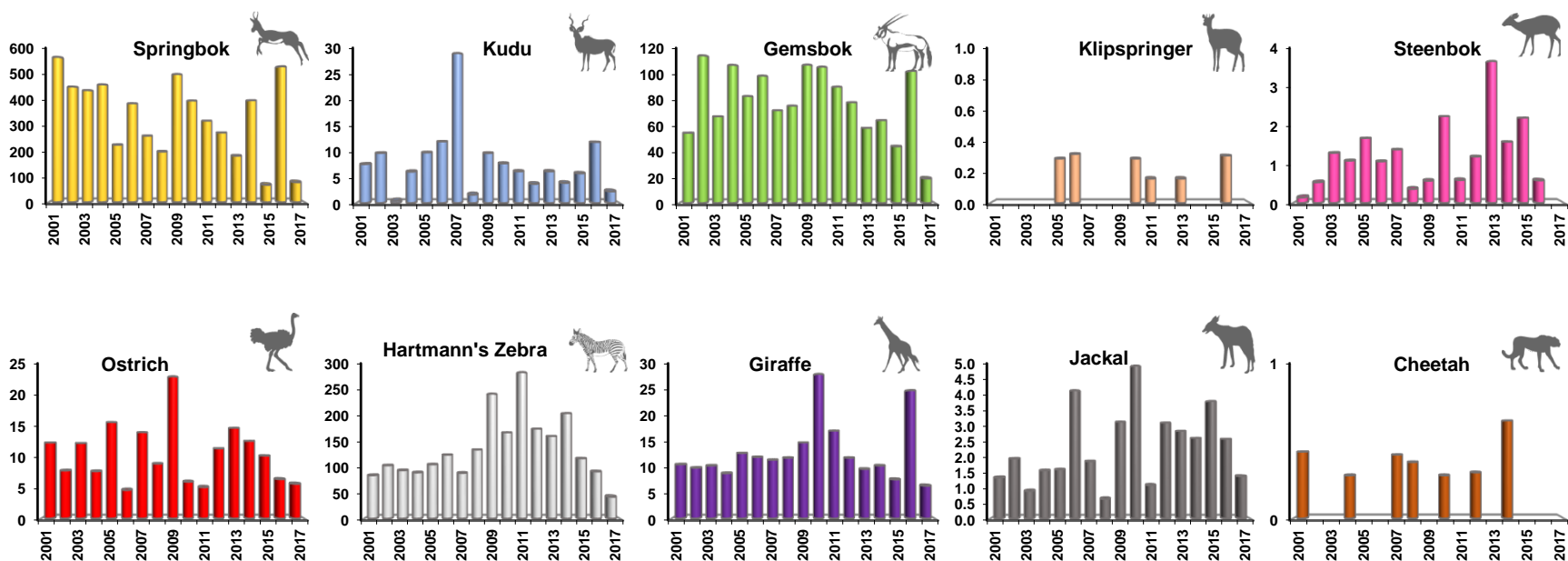
All above estimates are derived using DISTANCE analysis. This takes account of drop off in detection with distance from the transect line. They are conservative estimates as 43% of the count area is not sampled (due to inaccessibility) and is consequently assumed to hold no animals. Model selection: U = uniform key; HN = half normal



Total number of animals seen each year

Species	2001	2002	2003	2004	2005	2006	2007	2008	2009	2010	2011	2012	2013	2014	2015	2016	2017
Baboon				3	66		95		28	37	32	54	70	23	24	27	8
Cheetah	3			2			3	3		2		2		4			
Eland														3			
Elephant	3		19	7	16		3	9	15	1	17	23	20	15	28	2	6
Gemsbok	368	825	452	756	575	620	505	595	719	728	587	503	370	394	290	675	126
Giraffe	71	71	69	62	88	75	80	93	99	193	111	76	61	63	50	164	42
Hyaena	1						1			6	1				5	2	5
Jackal	9	14	6	11	11	26	13	5	21	34	7	20	18	16	25	17	9
Klipspringer					2	2				2	1		1				2
Kudu	51	70	3	43	68	75	204	13	65	53	40	24	39	24	38	78	15
Ostrich	83	56	82	54	108	29	98	70	154	41	33	73	93	77	67	42	37
Springbok	3,822	3,248	2,933	3,241	1,550	2,421	1,819	1,553	3,349	2,730	2,067	1,747	1,149	2,435	448	3,487	515
Steenbok	1	4	9	8	12	7	10	3	4	16	4	8	24	10	15	4	
H. Zebra	567	744	629	631	728	777	621	1,054	1,623	1,152	1,845	1,122	1,016	1,253	770	602	279

Trends - Number of animals per 100km



Animals seen during this count and minimum estimates

	Total	Etendeka	Palmwag
Total Route km	653	95	558
Total area (km ²)	6,524	633	5,891
Number of routes	14	3	11
% area excluded	43	44	43

Values without brackets are numbers of animals seen along transects. Values inside brackets are minimum estimates assuming all animals within 500m on each side of the transect line are detected i.e. there is no adjustment for drop off in detection with distance from the transect line. In addition, for springbok, gemsbok and giraffe, large groups were excluded from extrapolations and added afterwards.

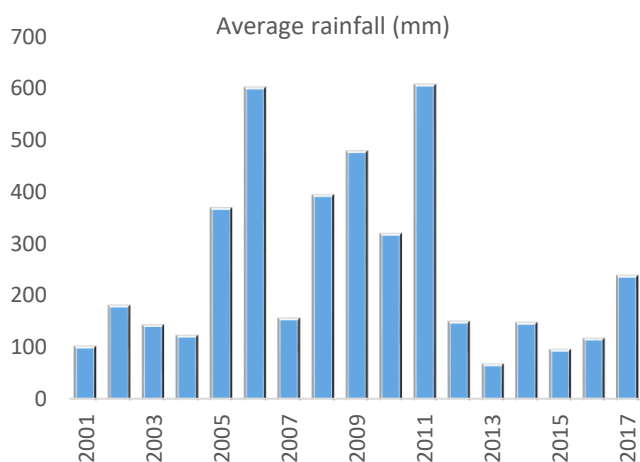
Species	Etendeka	Palmwag
Gemsbok	33 (101)	93 (310)
Giraffe	23 (46)	19 (38)
Kudu	13 (51)	2 (7)
Ostrich		37 (322)
Springbok	367 (1,514)	148 (738)
Steenbok		
H. Zebra	160 (804)	119 (632)

The sum of these values will be significantly lower than the totals indicated in the top left table as the total estimates take account of species detection curves.



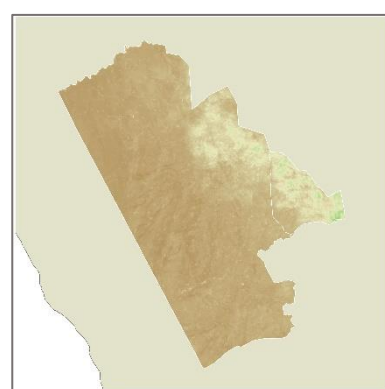
Photo: J. Moon

Rainfall



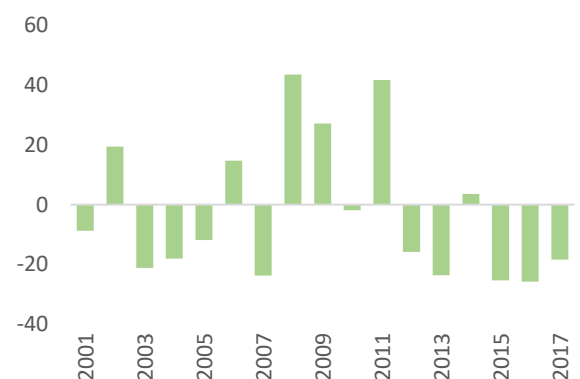
The rainfall season is from July to June and values are an average for the whole area. The year represents the season immediately prior to the count.

Vegetation



NDVI Index
1- Dense
0.5- Moderate
0- Sparse

NDVI - percentage difference from long term mean



NDVI is a measure of the density of chlorophyll in vegetation cover. It can be used as an indicator of the amount of biomass available to wildlife. The map shows the NDVI status in the current year (Feb-April) and the trend indicates the average from Feb to April each year represented as a percentage of the long term mean (2001-2017).