

GAME COUNTS IN NORTH-WEST NAMIBIA

Conservancies south of the veterinary fence

May 2024

Total number of animals seen each year

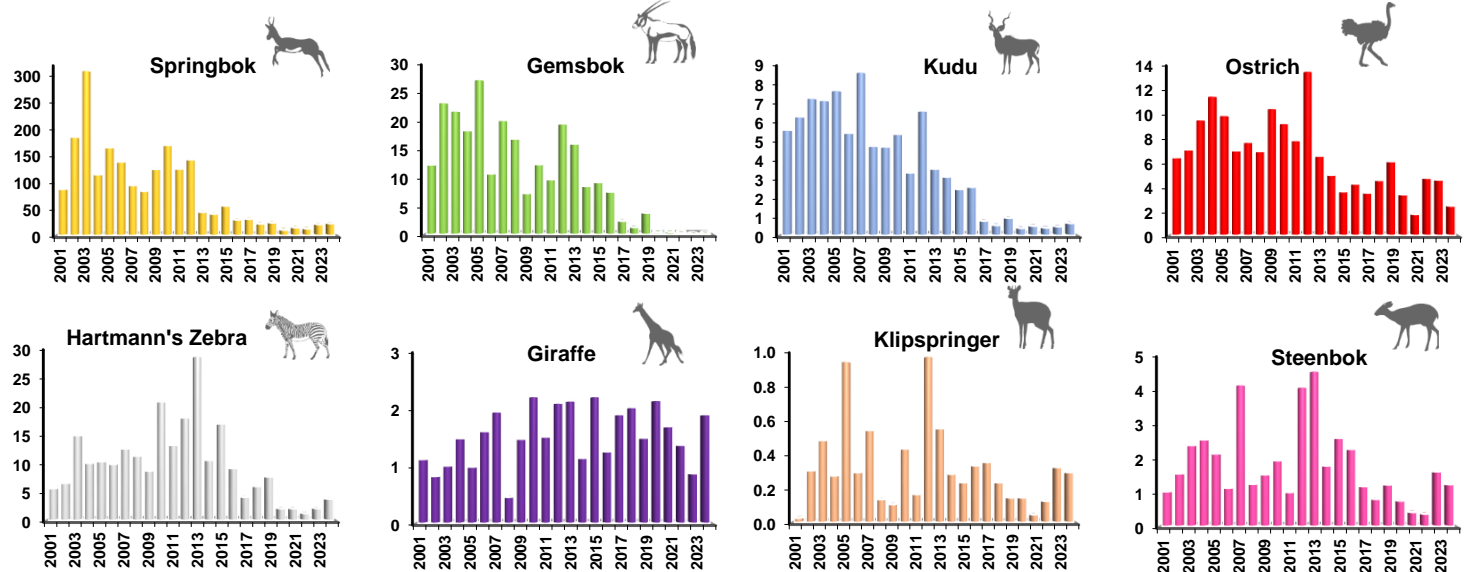
Species	2001	2002	2003	2004	2005	2006	2007	2008	2009	2010	2011	2012	2013	2014	2015	2016	2017	2018	2019	2020	2021	2022	2023	2024
Baboon	99	72	148	55	236	104	238	134	177	228	123	320	206	46	75	309	161	118	121	23	44	35	113	147
Cheetah				3	4	1			3				1	6	5		3							
Duiker	9	5	1	4	18	3	2		7	1	7	2	11	3	3	8	2	3	2	1	1	2	1	2
Elephant	15	12	1	5	60	4	27	24	37	20	35	6	6	55	23	22	60	26	20	22	20	15	73	18
Gemsbok	370	681	628	537	928	367	707	625	273	452	354	740	642	296	358	296	96	52	158	17	20	14	4	9
Giraffe	28	25	30	45	35	57	71	18	57	84	57	83	89	41	89	51	77	80	63	90	71	57	39	44
Hartebeest										1	23	26	75	22	6	63	7	2	4					
Hyaena, Spotted				1	7		1	3	1	4	1	1	3			1	3		1	2			1	2
Impala, BF										24	33	8	16	30	80	3		25	2		17	3		7
Jackal, BB	27	35	26	26	34	22	40	32	22	46	33	42	45	32	32	42	38	22	14	17	14	11	21	15
Klipspringer		9	14	8	32	10	19	5	4	16	7	37	22	10	9	13	14	9	6	6	2	5	14	12
Kudu	155	190	216	216	269	191	313	181	181	202	127	246	146	111	98	104	32	22	40	17	22	18	22	27
Ostrich	193	207	275	336	336	239	270	257	391	337	288	515	263	173	141	167	138	174	249	137	72	191	198	91
Springbok	2,611	5,423	8,939	3,366	5,618	4,746	3,326	3,112	4,670	6,208	4,564	5,441	1,797	1,434	2,184	1,189	1,242	874	1,020	461	645	559	942	886
Steenbok	31	47	71	77	75	40	151	48	59	73	39	160	188	64	104	92	48	32	52	32	18	17	72	48
Warthog	3			4	2	4	6				4	2	2	2	4			1						
Zebra, Hartmann's	170	193	430	295	352	338	442	420	326	761	481	686	1,155	367	657	359	163	230	314	88	88	54	95	144

Population Estimates

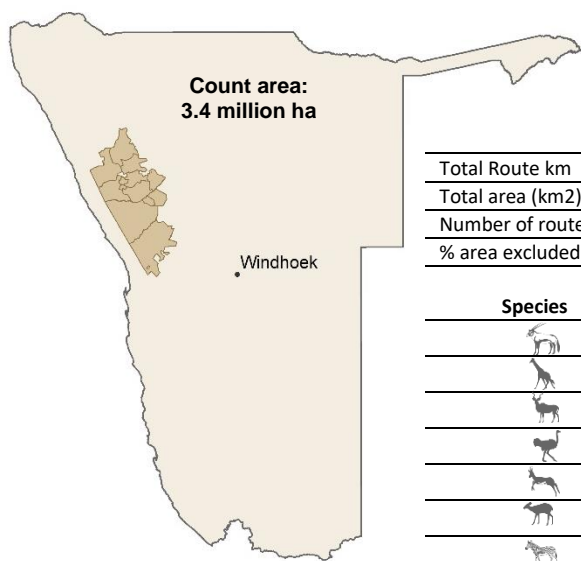
Species	Estimate	Lower 95% CL	Upper 95% CL
Gemsbok (HN)	120	29	486
Kudu (HN)	298	120	740
Ostrich (HN)	1,116	619	2,011
Springbok (HN)	19,231	11,334	32,630
Steenbok (HN)	6,139	2,221	16,969
Hartmann's Zebra (HN)	1,626	644	4,104

All above estimates are derived using DISTANCE analysis. This takes account of drop off in detection with distance from the transect line. They are conservative estimates as 19% of the count area is not sampled (due to inaccessibility) and is consequently assumed to hold no animals. Model selection: U = uniform key; HN = half normal

Trends: Animals per 100km



Animals seen during this count and estimates

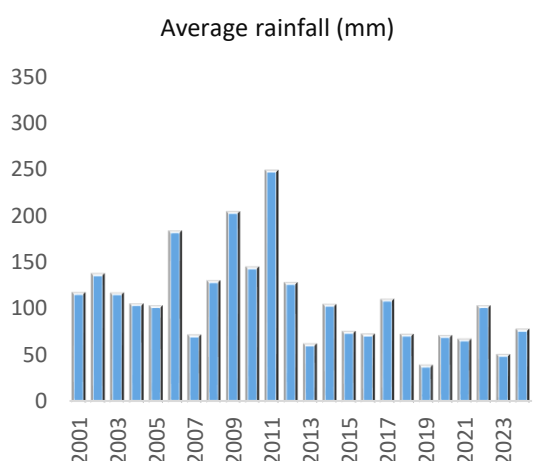


	Total	!Khoros !Goreb	#Khoadi- //Hoas	//Audi	Doro !Nawas & Ujibasen Twyfelfontein	#Gaingu	//Huab	Ohungu	Otjimboyo	Sorris sorris	Torra	Tsiseb
Total Route km	4,572	184	514	103	588	807	487	205	137	265	588	694
Total area (km2)	34,006	1,283	3,364	335	4,135	7,731	1,817	1,196	448	2,290	3,493	7,914
Number of routes	70	4	9	2	9	10	9	3	3	5	8	8
% area excluded		30	45	0	6	17	4	14	30	18	25	16

Species												
Gemsbok				1 (21)						4 (85)	4 (51)	
Giraffe			18 (70)	2 (18)						4 (36)	20 (106)	
Kudu				2 (34)			16 (128)				8 (82)	1 (27)
Ostrich				17 (283)				6 (63)		39 (663)	27 (275)	2 (53)
Springbok			34 (389)	49 (1249)	188 (4727)	56 (677)	12 (192)	33 (343)	181 (4719)	304 (4732)	29 (1164)	
Steenbok	2 (253)		6 (413)	1 (154)			28 (2039)	5 (482)	1 (63)		3 (282)	2 (484)
Hartmann's Zebra			37 (220)				28 (176)				79 (640)	

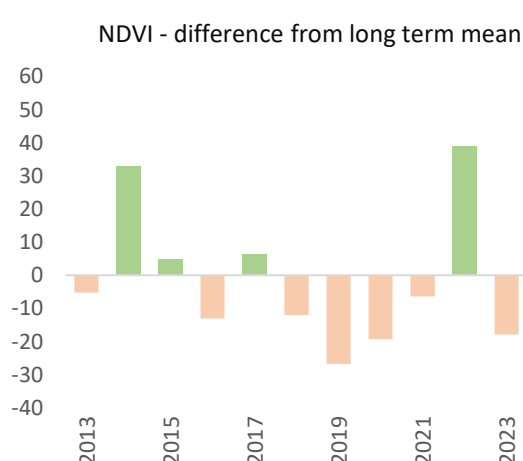
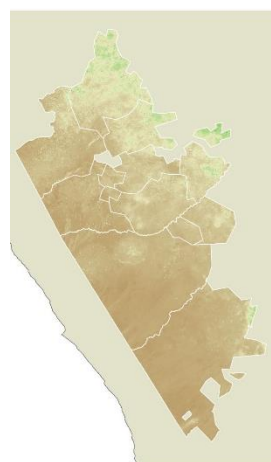
Values without brackets are numbers of animals seen along transects. Values in brackets are estimates derived using the Effective Strip Width (ESW) for each species from Distance analysis. While totals will be similar in magnitude to the estimates presented top left, they will not be the same. Giraffe estimates have not been adjusted for drop-off in detectability.

Rainfall



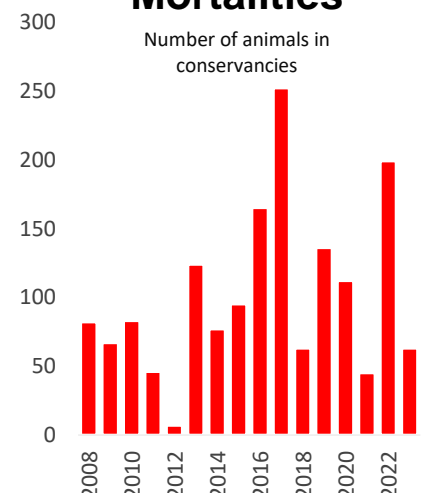
The rainfall season is from July to June and values are an average for the whole area.

Vegetation



NDVI is a measure of the density of chlorophyll in vegetation cover. It can be used as an indicator of the amount of biomass available to wildlife. The map shows the NDVI status in the current year (Feb-Apr) and the trend indicates the average deviation of southern area conservancies from the long-term mean, in each year.

Mortalities



Total number of carcasses from all species recorded in the Event Book