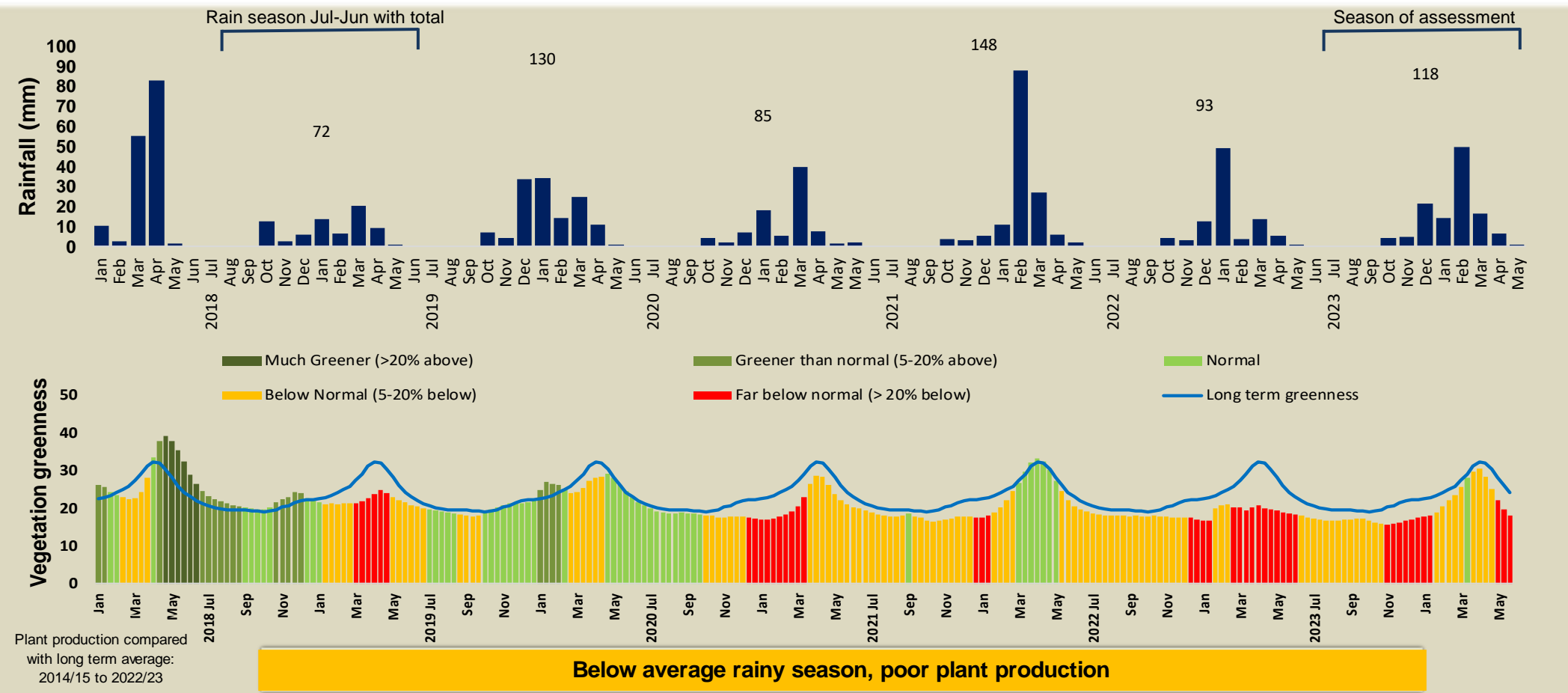


# Otjiu-West Climate and Vegetation Report



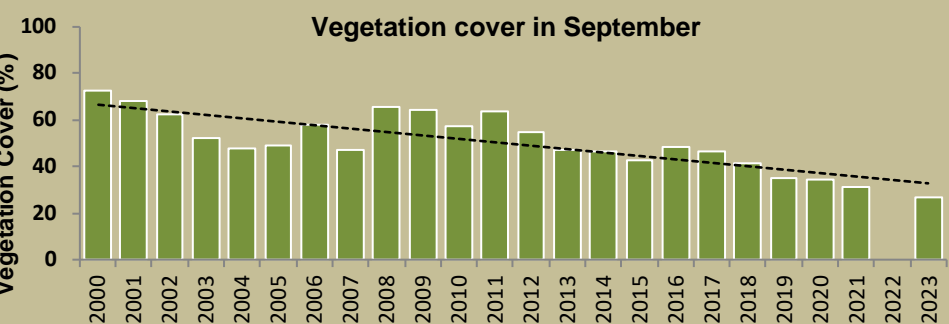
Adapting in response to the current environmental conditions ...

## Seasonal trends in rainfall and vegetation (2023 / 2024 Season)



## Vegetation cover trend (2000 - 2023)

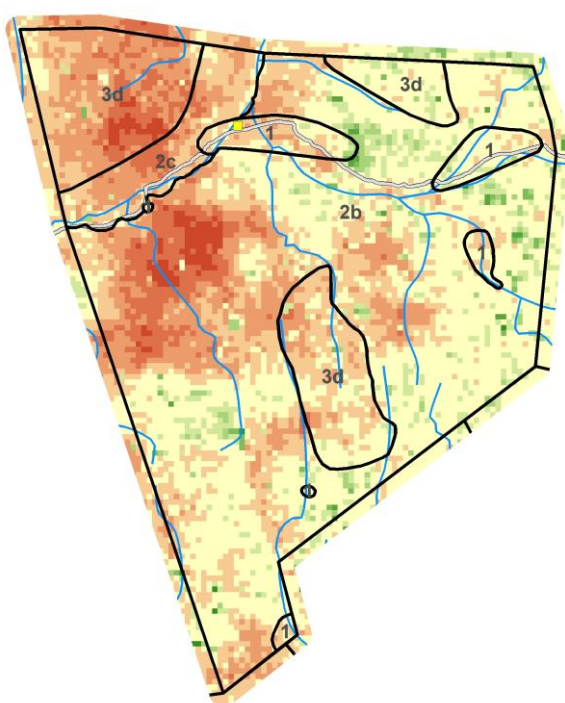
High vegetation cover is good because more rainwater is prevented from running off, causing less erosion. Also, the soil is shaded leading to a decrease in soil temperature and evaporation.



**Plant cover is decreasing - Why?**



## Vegetation productivity (February to April) 2024



### Growing season

**Zones**

- 1) Settlement & Cropping Area
- 2a) Multiple Use: Livestock Priority
- 2b) Multiple Use: Hunting Priority
- 2c) Multiple Use: Tourism Priority
- 2d) Multiple Use: Mining Priority
- 3a) Exclusive Wildlife: All Utilisation
- 3b) Exclusive Wildlife: Trophy Hunting
- 3c) Exclusive Wildlife: Tourism
- 3d) Exclusive Wildlife: No Disturbance
- 4) Forest

**Difference from average**

- Much poorer
- Same as average
- Much better

Roads, Rivers, Management zones

## Fire management

Burns between 2000 and 2023      When and where it burnt in 2023

No fire monitoring

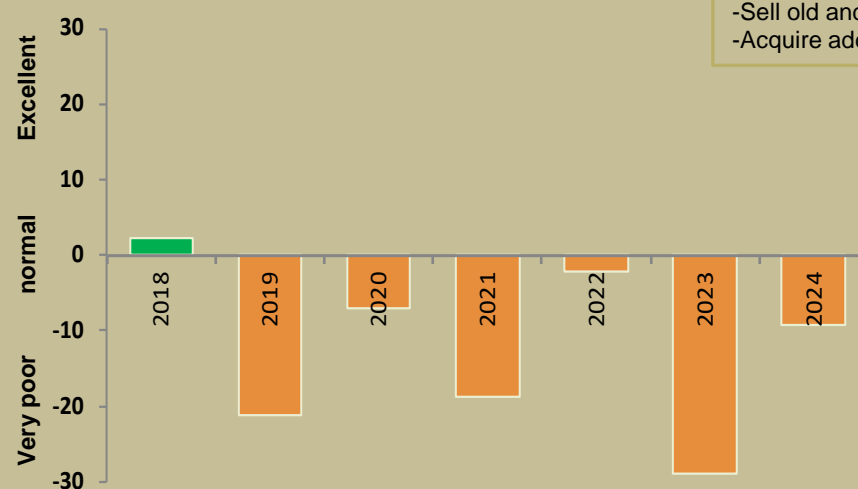


## Forage availability

During the growing season enough forage must be produced to sustain livestock and game until the next rainy season

### Management Options

- Do nothing
- Buy more animals
- Move animals to better grazing
- Sell old and unproductive animals
- Acquire additional forage



Climate and vegetation patterns assist in our understanding of the status of wildlife and livestock in the conservancy for the effective management of these resources.