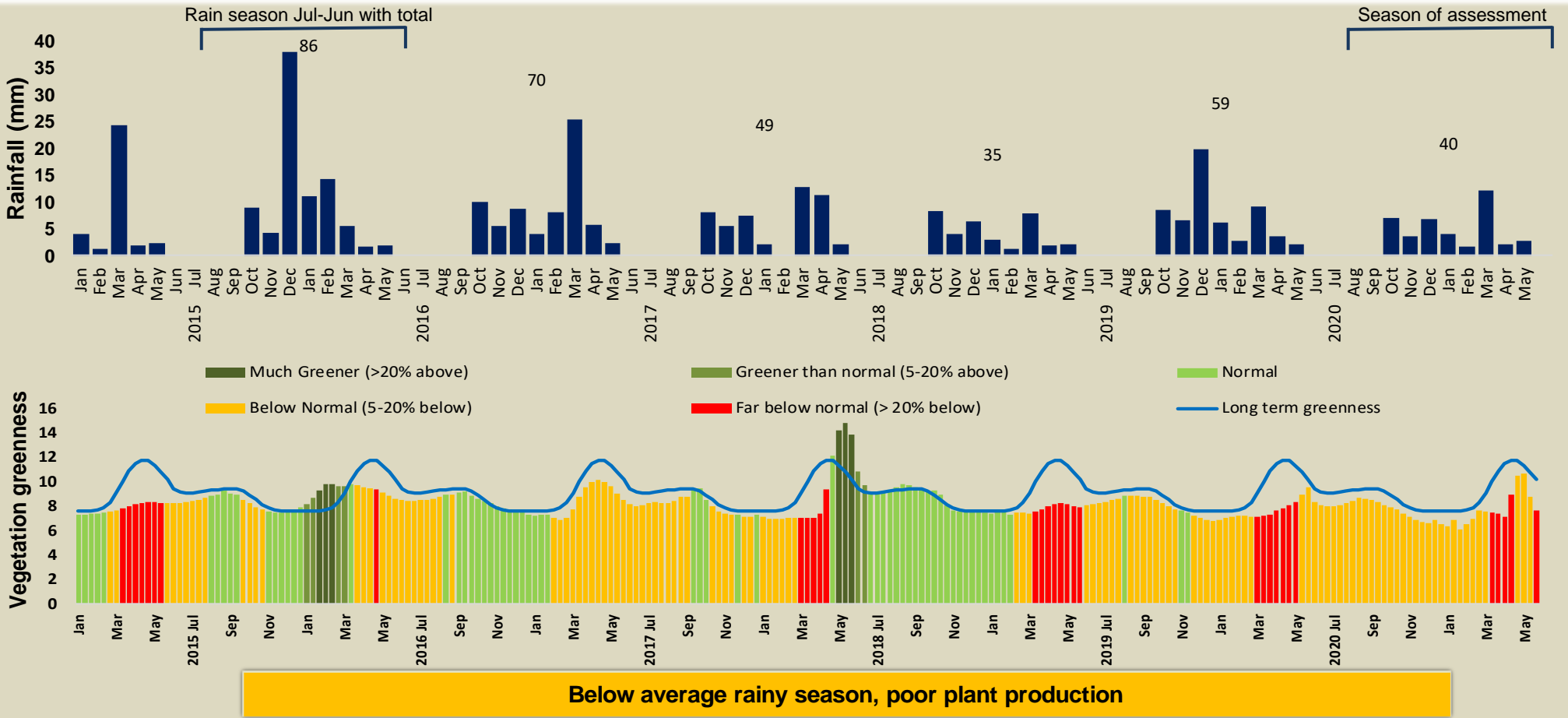




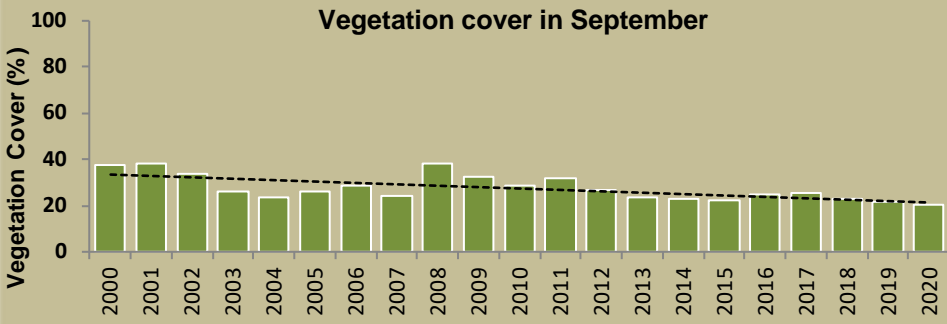
Adapting in response to the current environmental conditions ...

Seasonal trends in rainfall and vegetation (2020 / 2021 Season)



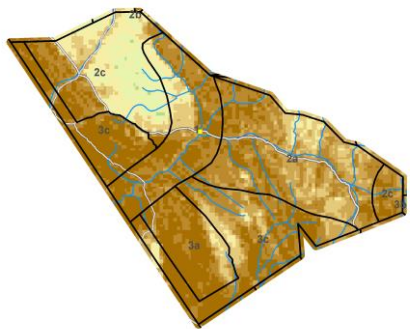
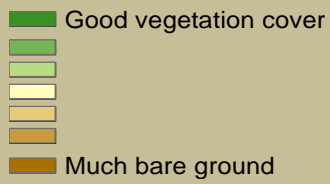
Vegetation cover trend (2000 - 2020)

High vegetation cover is good because more rainwater is prevented from running off, causing less erosion. Also the soil is shaded leading to a decrease in soil temperature and evaporation.

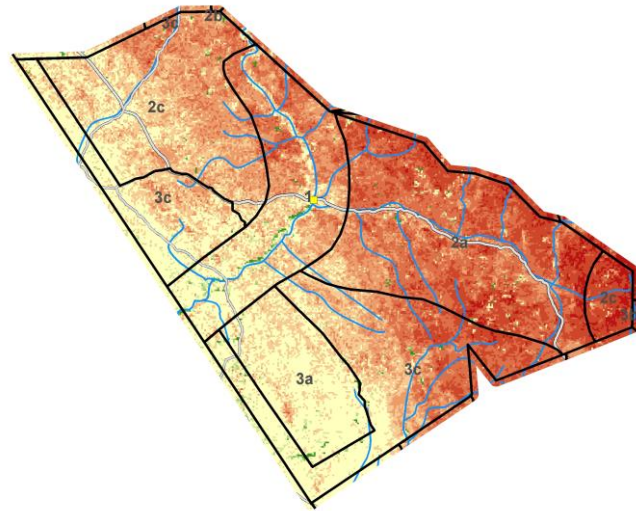


Plant cover is decreasing - Why?

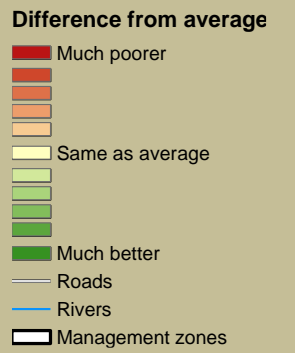
Vegetation cover : 2020



Vegetation productivity (February to April) 2021

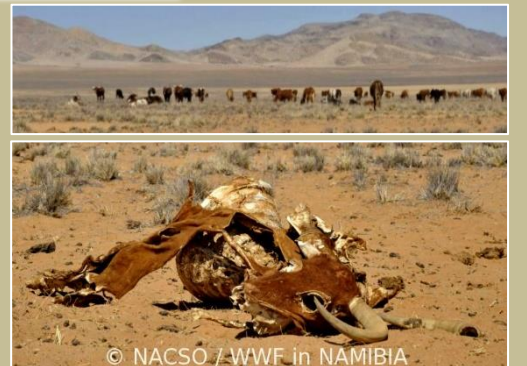


Growing season



Zones

- 1) Settlement & Cropping Area
- 2a) Multiple Use: Livestock Priority
- 2b) Multiple Use: Hunting Priority
- 2c) Multiple Use: Tourism Priority
- 2d) Multiple Use: Mining Priority
- 3a) Exclusive Wildlife: All Utilisation
- 3b) Exclusive Wildlife: Trophy Hunting
- 3c) Exclusive Wildlife: Tourism
- 3d) Exclusive Wildlife: No Disturbance
- 4) Forest



Fire management

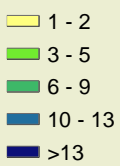
Burns between 2000 and 2020

When and where it burnt in 2020

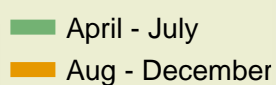
No fire monitoring



Times burned



Burned area



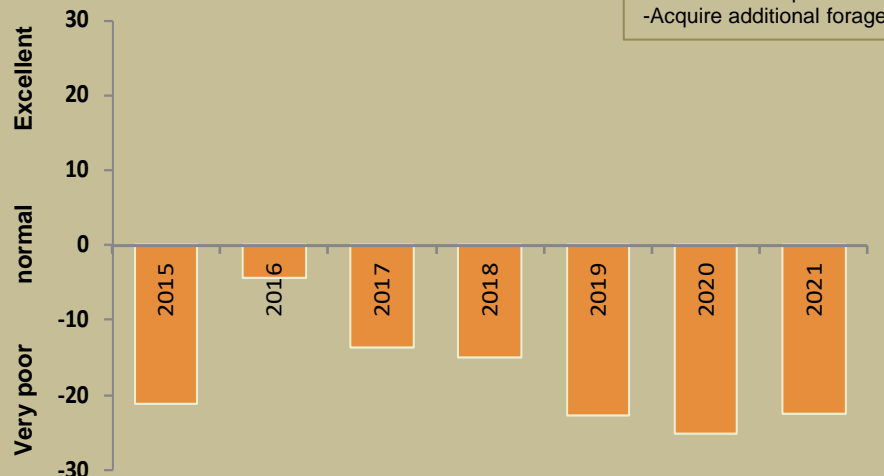
Prevent late burns

Forage availability

During the growing season enough forage must be produced to sustain livestock and game until the next rainy season

Management Options

- Do nothing
- Buy more animals
- Move animals to better grazing
- Sell old and unproductive animals
- Acquire additional forage



Below normal forage availability - Enough for livestock and game?



Climate and vegetation patterns assist in our understanding of the status of wildlife and livestock in the conservancy for the effective management of these resources.