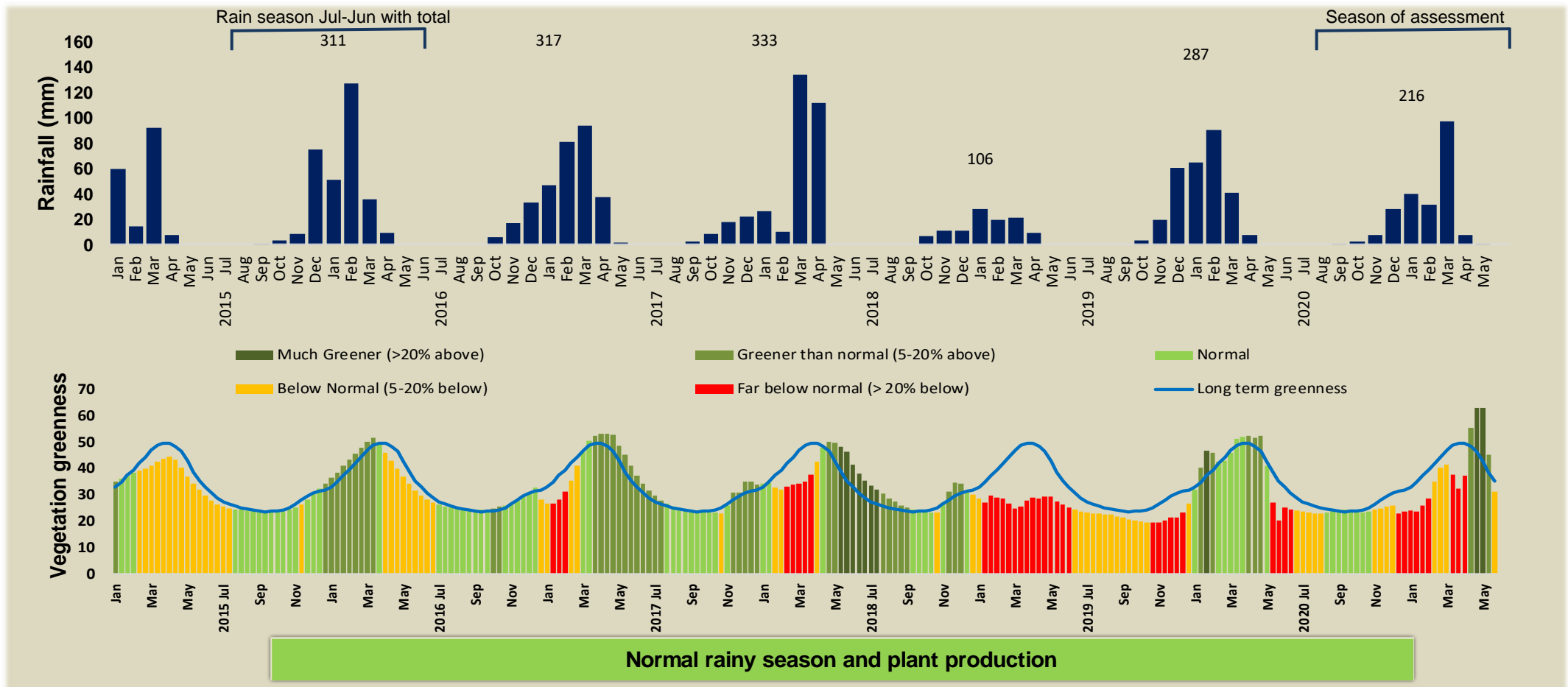


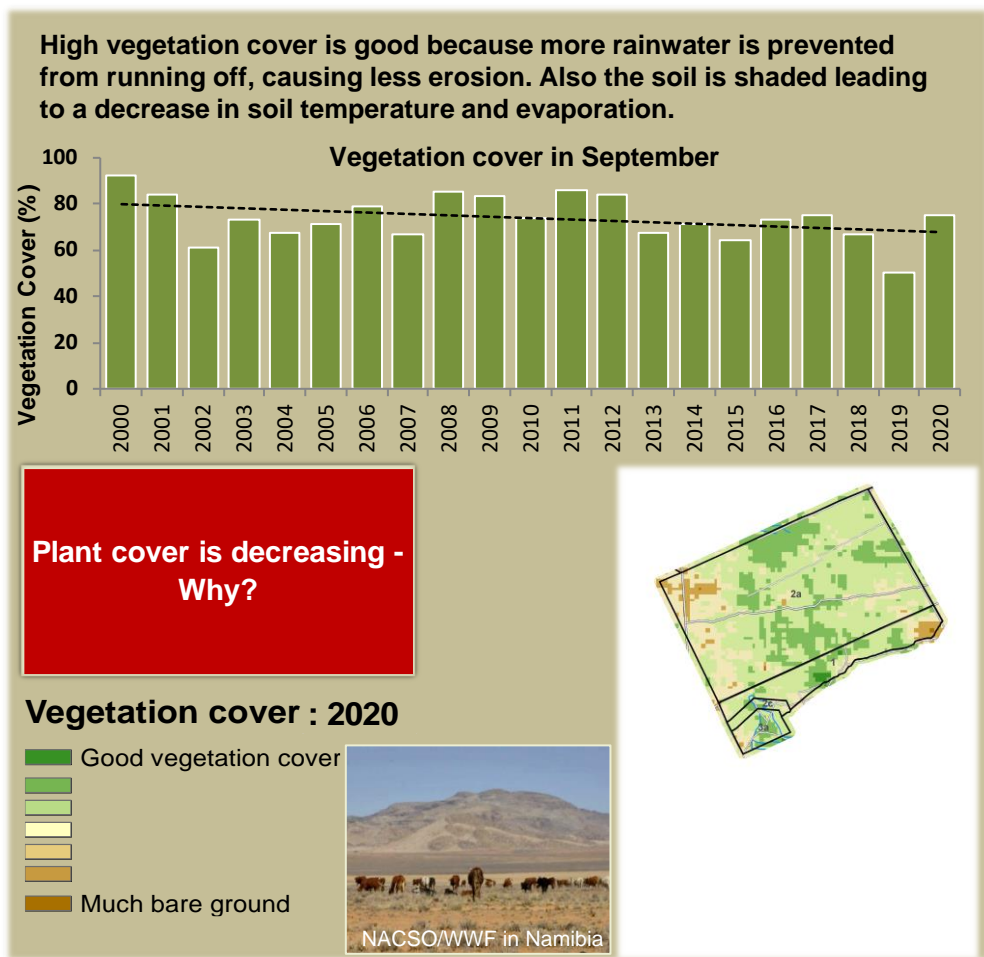


Adapting in response to the current environmental conditions ...

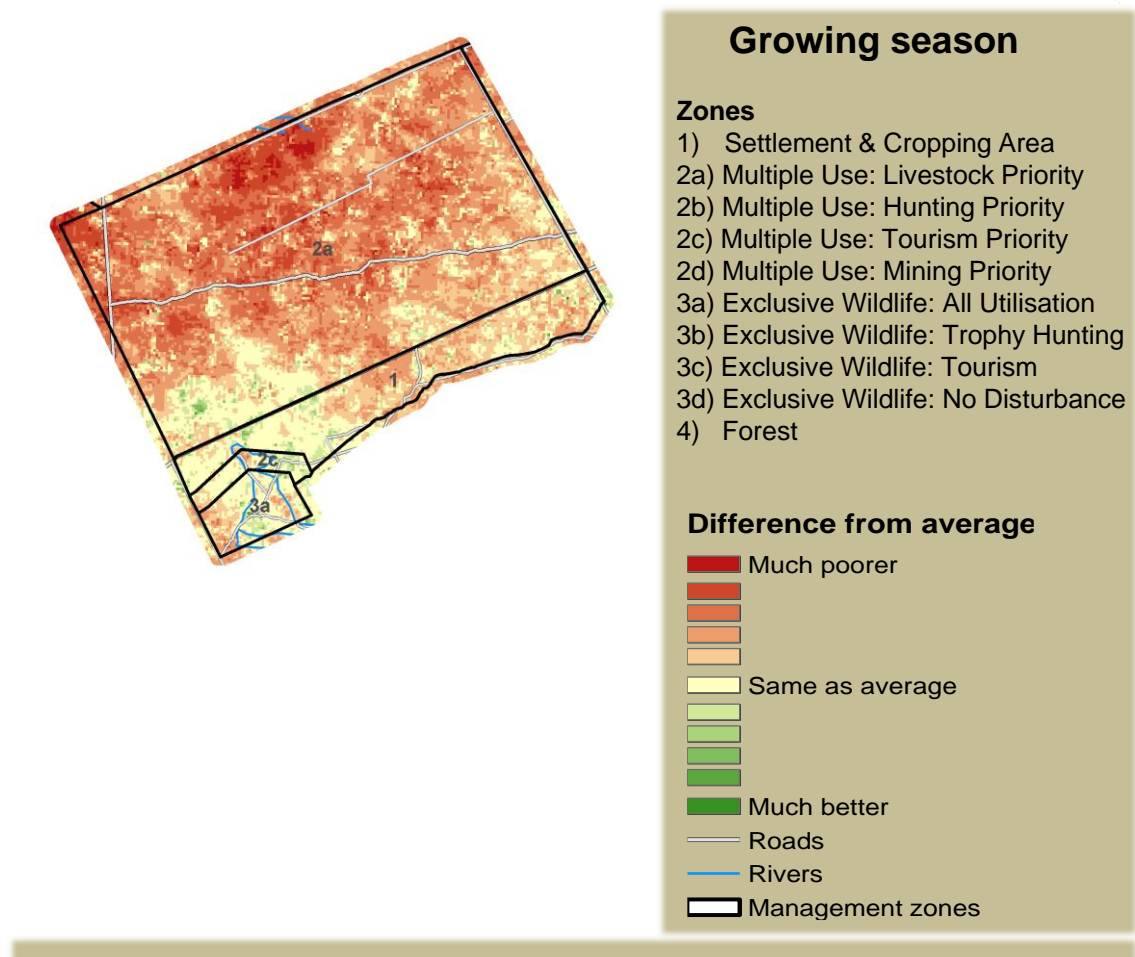
## Seasonal trends in rainfall and vegetation (2020 / 2021 Season)



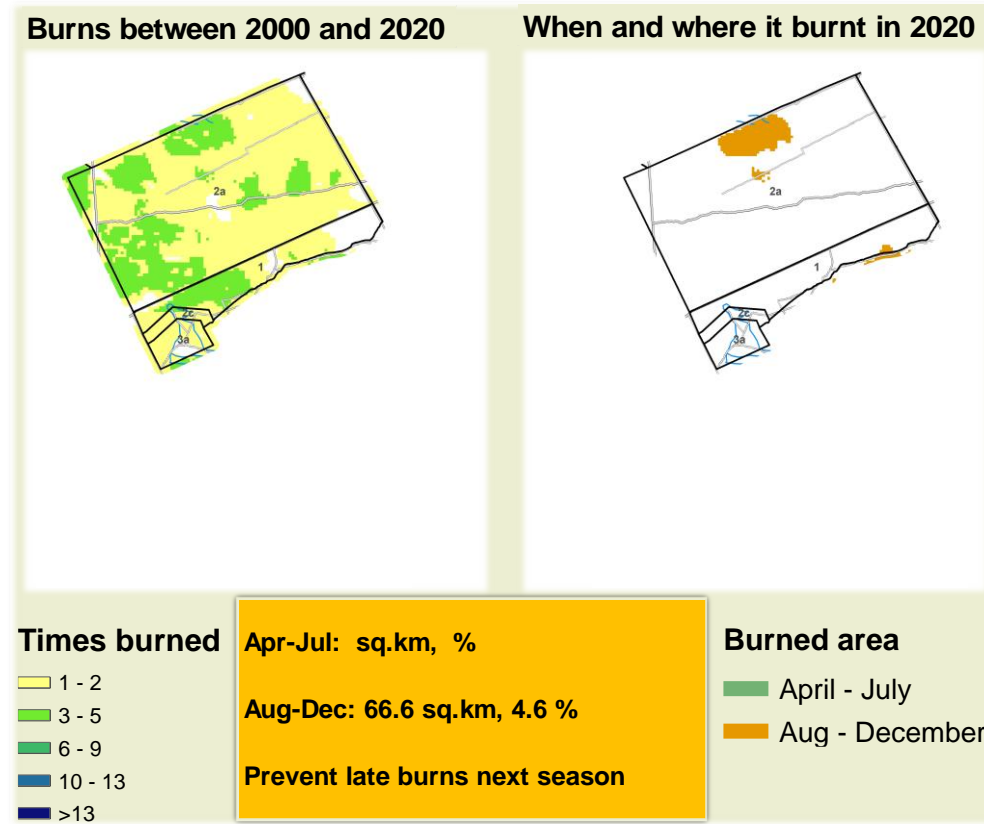
## Vegetation cover trend (2000 - 2020)



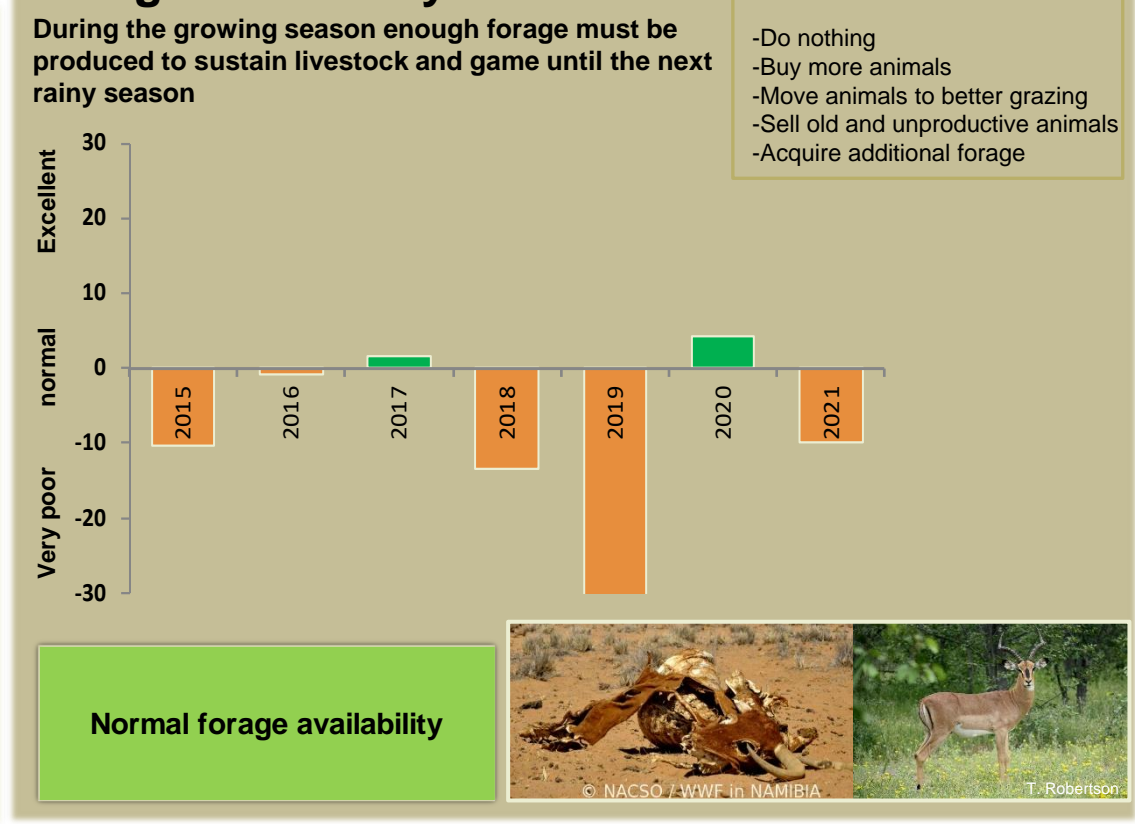
## Vegetation productivity (February to April) 2021



## Fire management



## Forage availability



Climate and vegetation patterns assist in our understanding of the status of wildlife and livestock in the conservancy for the effective management of these resources.