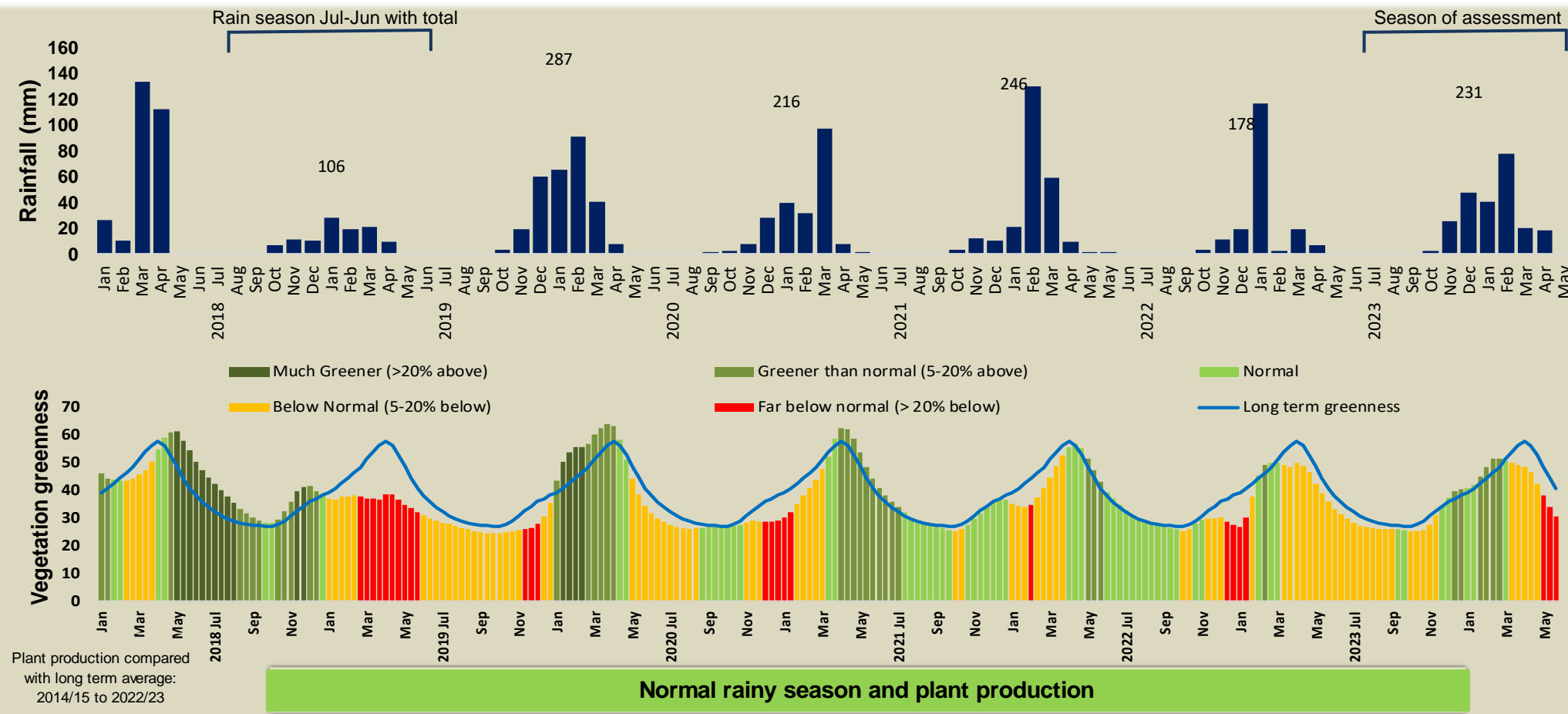




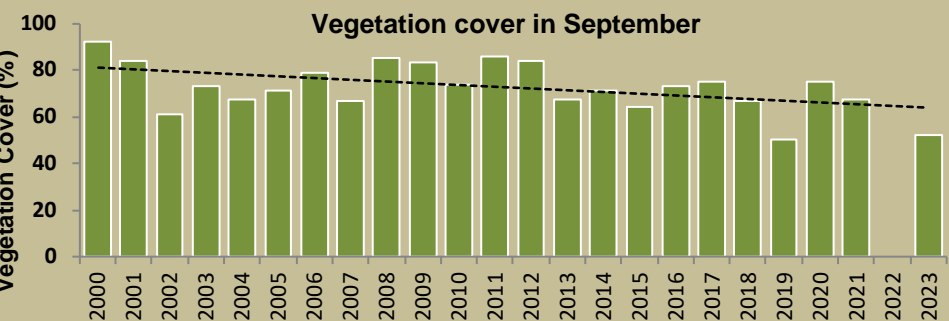
Adapting in response to the current environmental conditions ...

Seasonal trends in rainfall and vegetation (2023 / 2024 Season)



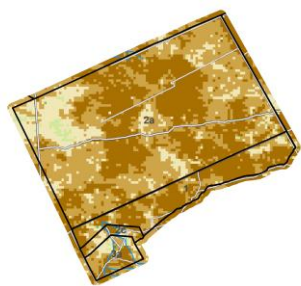
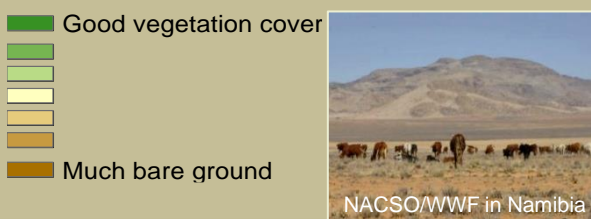
Vegetation cover trend (2000 - 2023)

High vegetation cover is good because more rainwater is prevented from running off, causing less erosion. Also, the soil is shaded leading to a decrease in soil temperature and evaporation.



Plant cover is decreasing - Why?

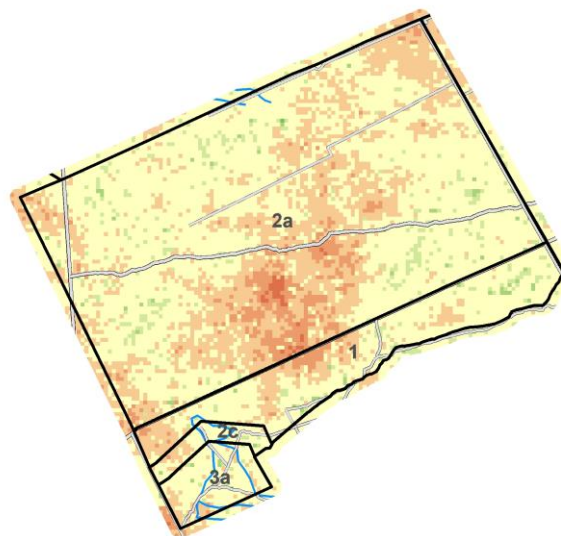
Vegetation cover : 2023



Vegetation productivity (February to April) 2024

Growing season

- Zones**
- 1) Settlement & Cropping Area
 - 2a) Multiple Use: Livestock Priority
 - 2b) Multiple Use: Hunting Priority
 - 2c) Multiple Use: Tourism Priority
 - 2d) Multiple Use: Mining Priority
 - 3a) Exclusive Wildlife: All Utilisation
 - 3b) Exclusive Wildlife: Trophy Hunting
 - 3c) Exclusive Wildlife: Tourism
 - 3d) Exclusive Wildlife: No Disturbance
 - 4) Forest



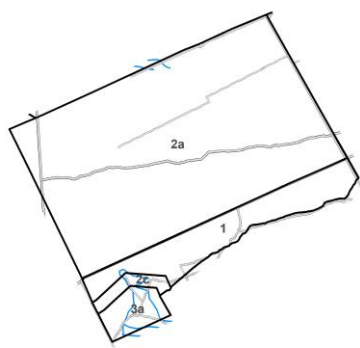
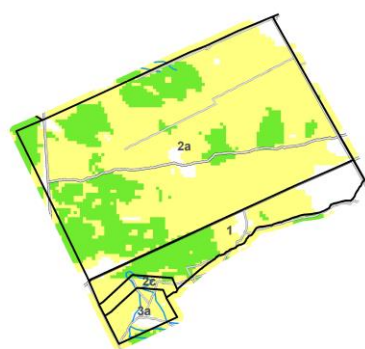
Difference from average

- Much poorer
- Same as average
- Much better
- Roads
- Rivers
- Management zones

Fire management

Burns between 2000 and 2023

When and where it burnt in 2023



Times burned

- 1 - 2
- 3 - 5
- 6 - 9
- 10 - 13
- >13

Prevent late burns

Burned area

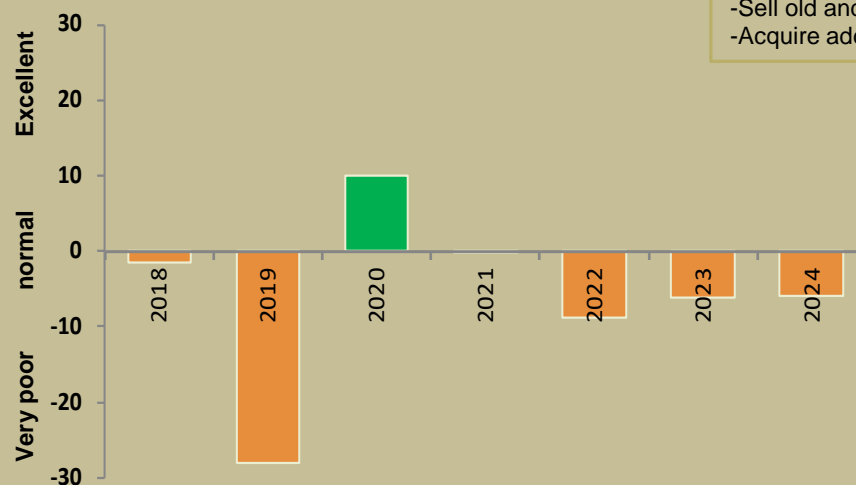
- April - July
- Aug - December

Forage availability

During the growing season enough forage must be produced to sustain livestock and game until the next rainy season

Management Options

- Do nothing
- Buy more animals
- Move animals to better grazing
- Sell old and unproductive animals
- Acquire additional forage



Normal forage availability



Climate and vegetation patterns assist in our understanding of the status of wildlife and livestock in the conservancy for the effective management of these resources.