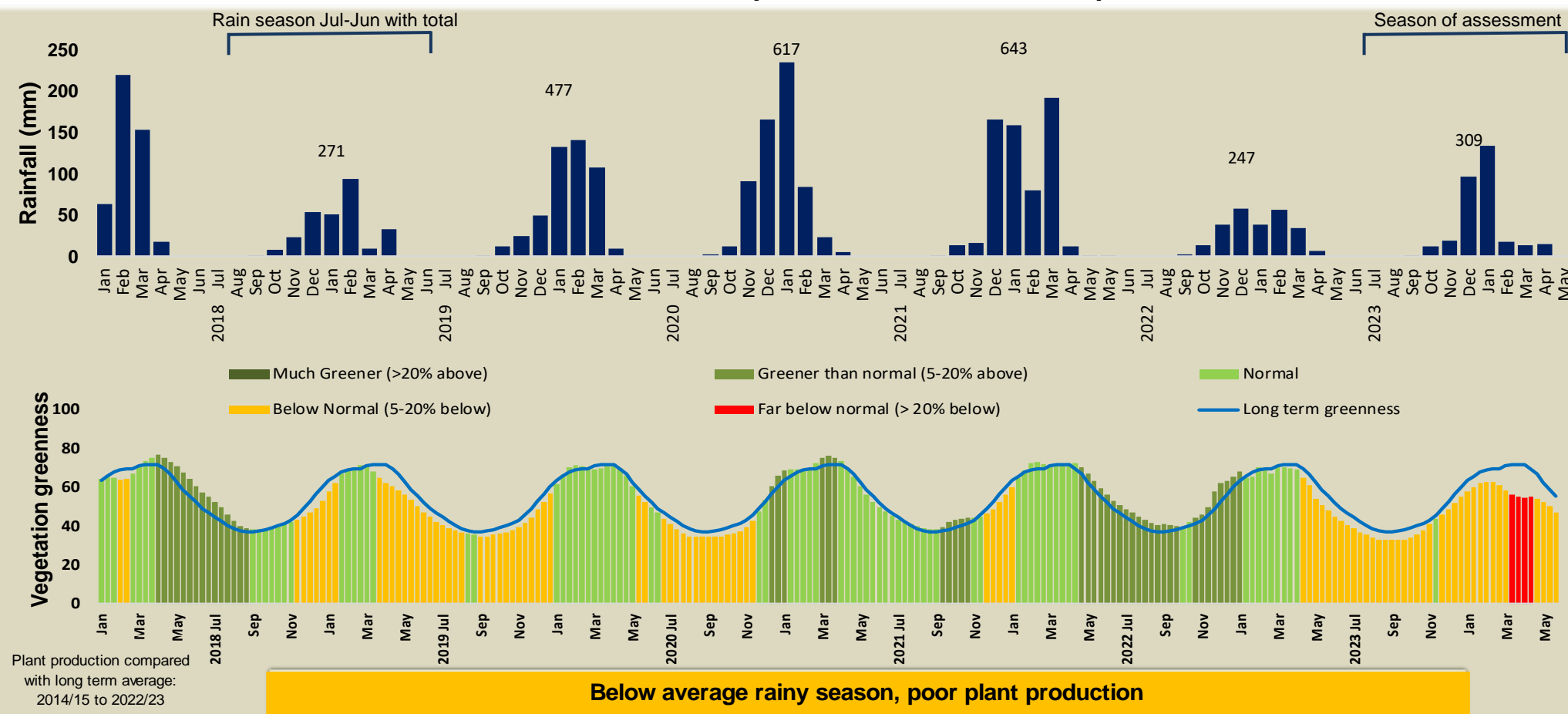




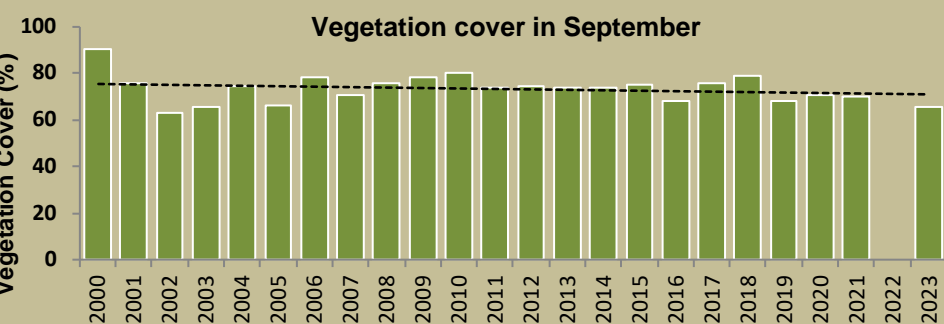
Adapting in response to the current environmental conditions ...

Seasonal trends in rainfall and vegetation (2023 / 2024 Season)



Vegetation cover trend (2000 - 2023)

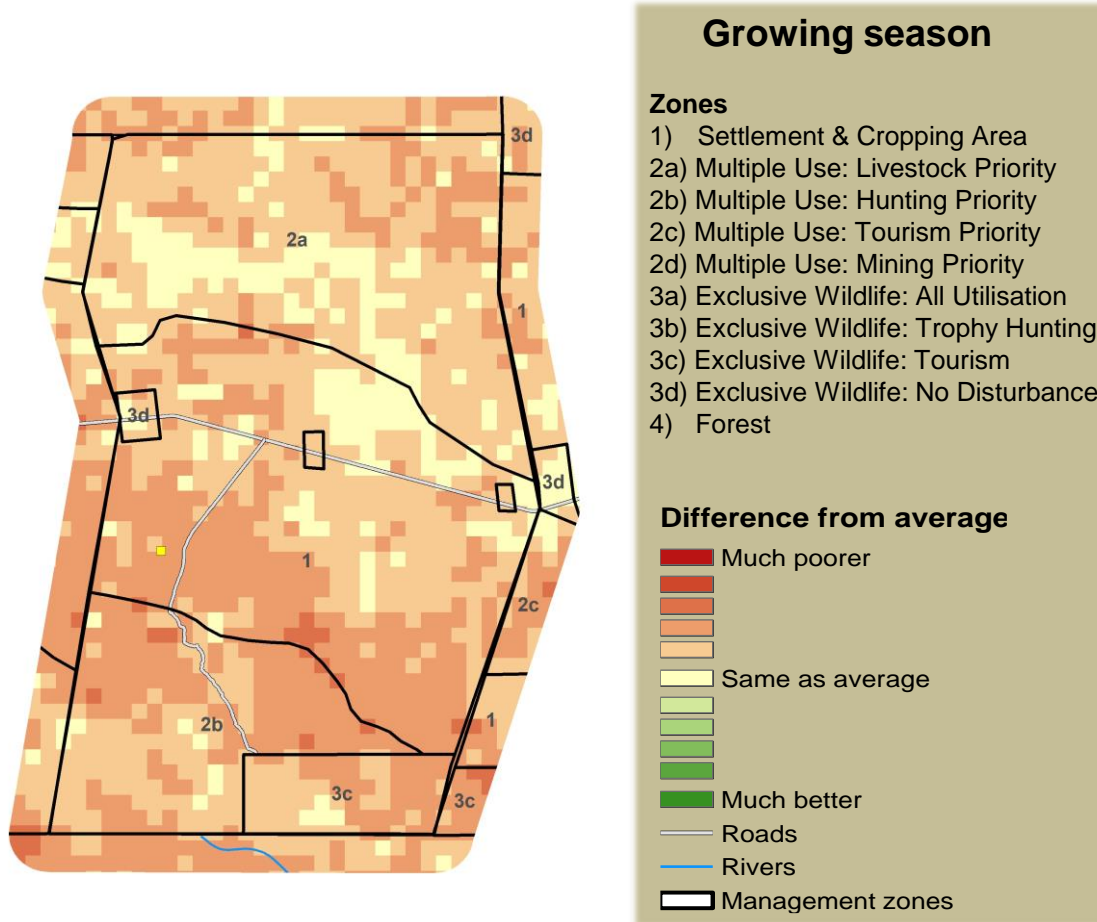
High vegetation cover is good because more rainwater is prevented from running off, causing less erosion. Also, the soil is shaded leading to a decrease in soil temperature and evaporation.



Plant cover has remained the same over time



Vegetation productivity (February to April) 2024

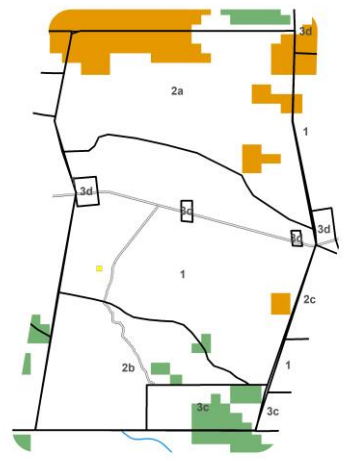
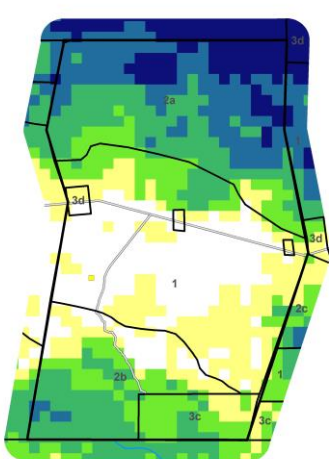


- ### Growing season
- Zones**
- 1) Settlement & Cropping Area
 - 2a) Multiple Use: Livestock Priority
 - 2b) Multiple Use: Hunting Priority
 - 2c) Multiple Use: Tourism Priority
 - 2d) Multiple Use: Mining Priority
 - 3a) Exclusive Wildlife: All Utilisation
 - 3b) Exclusive Wildlife: Trophy Hunting
 - 3c) Exclusive Wildlife: Tourism
 - 3d) Exclusive Wildlife: No Disturbance
 - 4) Forest

Fire management

Burns between 2000 and 2023

When and where it burnt in 2023



Times burned

- Apr-Jul: 5.4 sq.km, 2.8 %
- Aug-Dec: 14.1 sq.km, 7.4 %

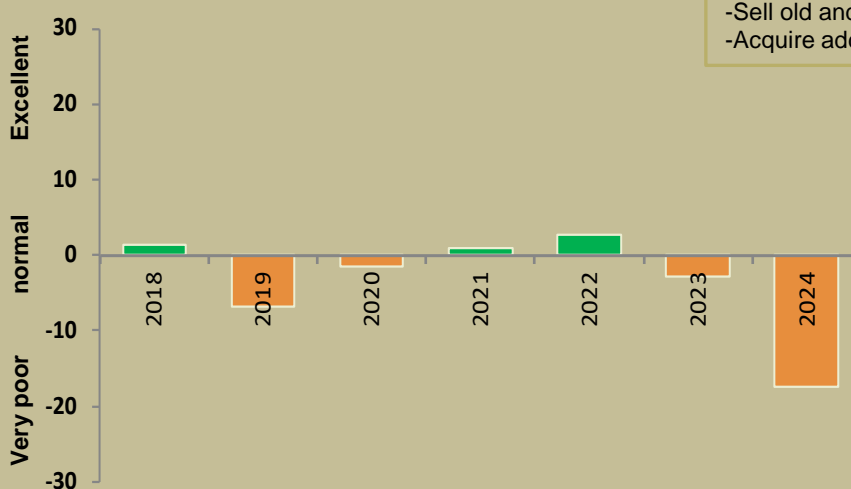
Prevent late burns next season

Burned area

- April - July
- Aug - December

Forage availability

During the growing season enough forage must be produced to sustain livestock and game until the next rainy season



Management Options

- Do nothing
- Buy more animals
- Move animals to better grazing
- Sell old and unproductive animals
- Acquire additional forage

Below normal forage availability - Enough for livestock and game?



Climate and vegetation patterns assist in our understanding of the status of wildlife and livestock in the conservancy for the effective management of these resources.