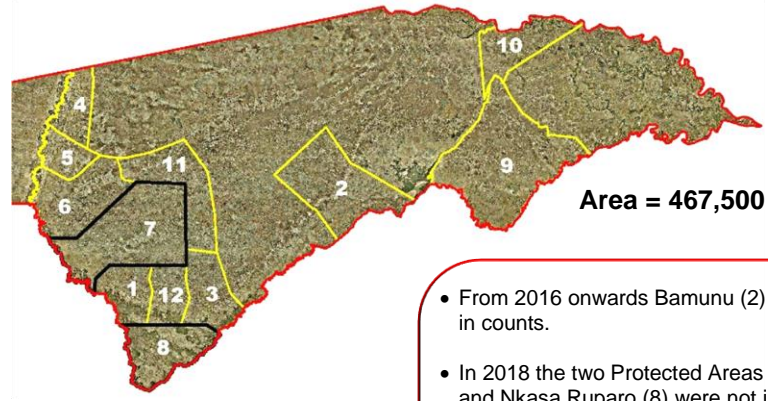


# GAME COUNTS IN EAST ZAMBEZI

The fundamental purpose of game counts in communal areas is to inform conservancies and MEFT of wildlife trends for the purposes of adaptive management of resources. While estimates for some species are provided, these should only be considered as an approximate guide to species abundance.

## Dry season - Live sightings August 2022



Area = 467,500 ha

### Numbers seen (transects):

Area	1 Balyerwa	2 Bamunu	3 Dzoti	4 Kwandu	5 Mashi	6 Mayuni	7 Mudumu	8 Nkasa Rupara	9 Salambala	10 Sikunga	11 Sobbe	12 Wuparo
Total km	77	90	120	95	104	86	386		208	44	110	46
No. of routes	11	9	12	11	9	6	24		16	4	10	5
Species	Not counted due to inundation											
Baboon							46					
Buffalo	60		150									86
Bushbuck				6								
Bushpig							2					
Cheetah							2					
Crocodile							2					
Duiker	3		5	3	8	4	32			1	5	1
Eland			4			55	11		20		2	
Elephant	100		57				407		7		10	
Giraffe					1		38		14			
Hippo							8					
Hyaena							1					
Impala	3		120		15		128		61			
Jackal		1										1
Kudu			12	5			23		10			1
Lechwe					15	15	21					
Leopard												
Lion	3						1					5
Ostrich												
Reedbuck		2	2	3								
Roan			3			2	43					18
Sable							37					50
Steenbok					2		7					1
Tsessebe												
V. Monkey						10						
Warthog		3					17		14			5
Waterbuck							2					
Wild dog												
Wildebeest			1				115		44			
Zebra B.		1,317	9		22		465					30

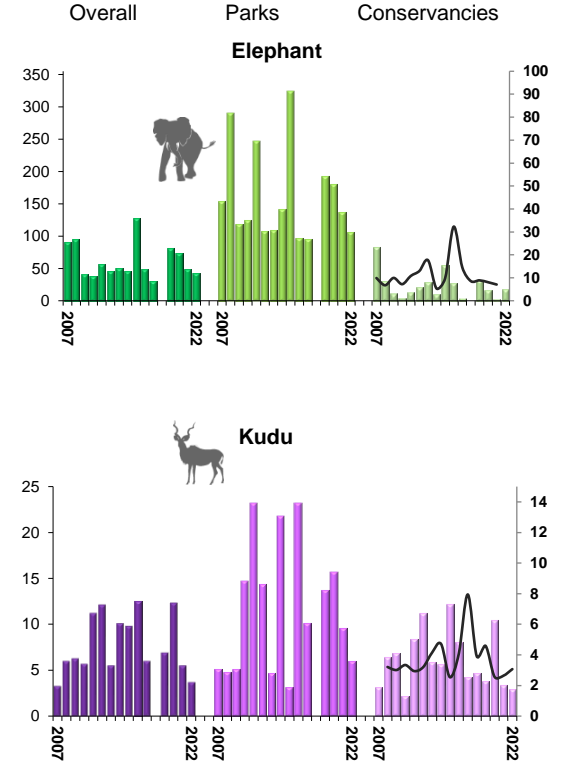
### Last 3 Count Years (transects)

Species	Animals Seen			Groups Seen		
	2022	2021	2020	2022	2021	2020
Baboon	46	94	181	4	5	9
Buffalo	296	180	602	4	8	7
Bushbuck	0	0	1	0	0	1
Bushpig	6	0	0	1	0	0
Cheetah	2	0	0	1	0	0
Crocodile	2	4	2	2	4	2
Duiker	62	110	91	58	101	84
Eland	92	66	7	8	11	4
Elephant	581	766	1,120	21	61	53
Giraffe	53	54	35	17	17	13
Hippo	8	22	41	2	7	9
Hyaena	1	0	2	1	0	1
Impala	327	1,531	1,447	27	152	139
Jackal	2	6	13	2	5	8
Kudu	51	87	189	12	23	46
Lechwe	51	313	462	8	46	33
Leopard	0	1	1	0	1	1
Lion	9	13	0	3	3	0
Ostrich	0	0	1	0	0	1
Reedbuck	7	42	45	4	19	22
Roan	66	114	118	19	35	35
Sable	87	41	57	6	12	11
Steenbok	10	16	19	8	13	18
Tsessebe	0	1	7	0	1	1
V. Monkey	10	31	0	1	3	0
Warthog	39	518	669	13	176	209
Waterbuck	2	2	92	1	1	9
Wild dog	0	21	1	0	4	1
Wildebeest	160	314	301	14	19	13
Zebra B.	1,843	2,723	1,298	73	84	66

- From 2016 onwards Bamunu (2) was included in counts.
- In 2018 the two Protected Areas Mudumu (7) and Nkasa Rupara (8) were not included in counts.
- In 2022 Nkasa Rupara (8) was not counted due to inundation.
- It is important to bear this in mind when interpreting tables, charts and a time series of posters.

### Trends:

Bars = numbers per 100km (left axis); line = monthly patrol sighting index



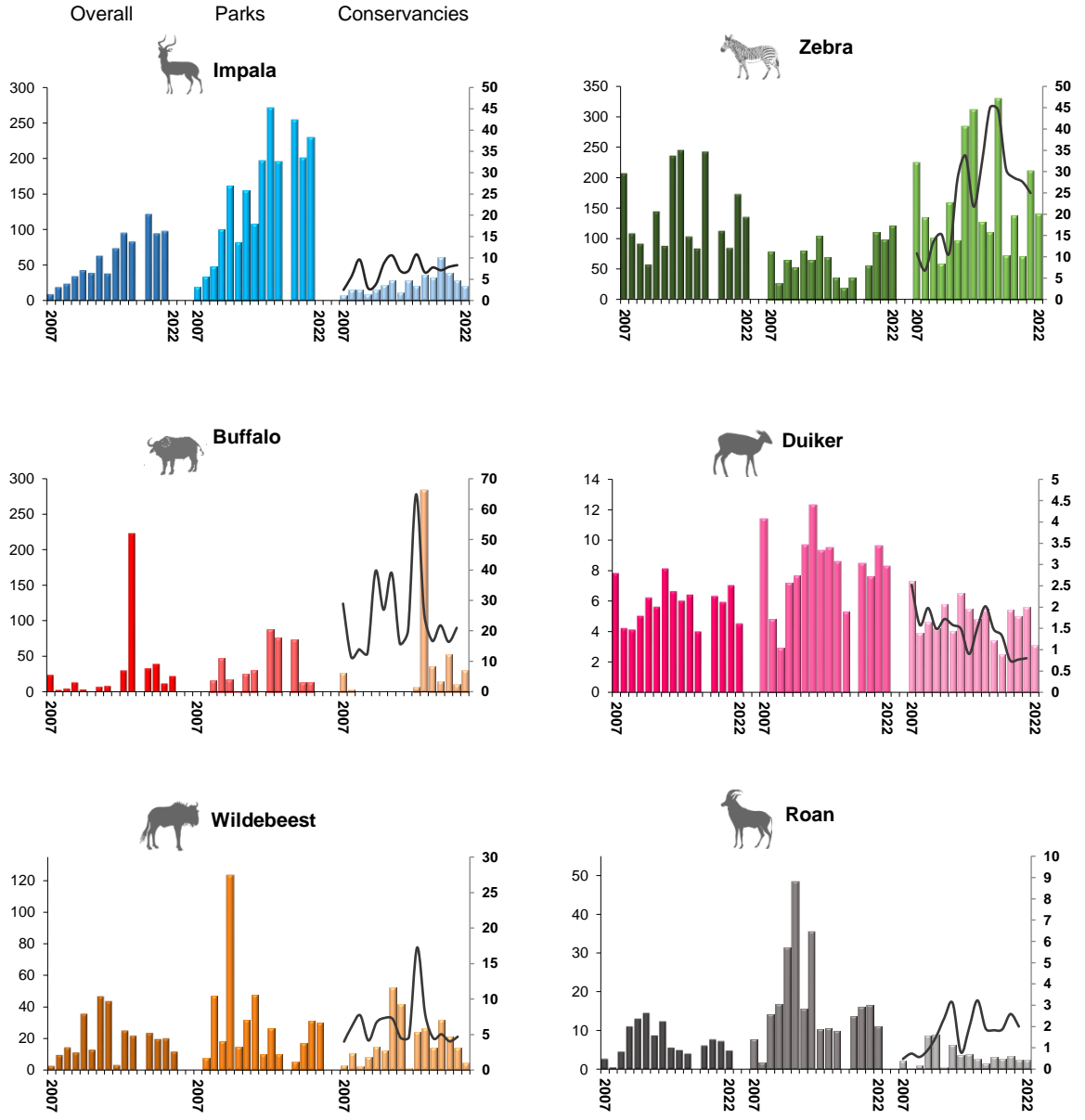
Mudumu and Nkasa Rupara (outlined in red) are National Parks, the remainder are conservancies

### Estimates

Estimates were calculated for the current year using DISTANCE. In most cases at least the last 5 years of data were used in analysis to generate a detection profile for each species. Several conservancies have been grouped due to the low numbers of animals recorded. The bottom row of the table (hyphenated) numbers = 95% Confidence Intervals. In Sikunga, very few sightings have ever been recorded (60 for all species since 2011) and no sensible estimates for any species can be derived for this area. With Zebra and Buffalo DISTANCE is not an appropriate method to use when the number of sightings is low. These animals are usually found in large herds and these sightings at least provide some guide to abundance.

Species	Kwandu Mayuni Mashi Sobbe	Balyerwa Dzoti Wuparo	Mudumu	Nkasa Rupara	Bamunu	Salambala	Sikunga
Buffalo	86	210	*		0	0	0
Duiker	660 397-1,096	127 52-311	1,106 661-1,851		*	*	*
Elephant	84 15-481	201 63-640	2,686 1302-5541		*	*	*
Giraffe	*	*	216 110-424		*	131 41-423	*
Impala	*	326 98-1088	1,779 399-7921		*	929 416-2070	*
Kudu	122 34-442	31 6-176	278 84-915		*	184 49-696	*
Lechwe	206	0	165		0	*	0
Roan	191 68-538	14 3-76	184 78-438		*	0	0
Sable	*	*	359 115-1121		0	*	0
Steenbok	*	*	27 5-154		0	*	0
Warthog	57 10-312	*	262 87-790		79 12-510	160 25-1036	*
Wildebeest	*	*	618 186-2050		*	1,628 655-4050	*
Zebra	52	9	3,553 2024-6237		1,317	*	0

DISTANCE analysis is not appropriate for herd species with low numbers of sightings.  
**In red:** numbers seen in transects.  
**In blue:** numbers seen in the river count.  
 \* = too few, or zero, observations to derive estimates-but animals have been recorded here  
 0 = no animals seen in counts



Impala in Nkasa Rupara account for around half of the total animals normally seen. Consequently, trend values for the two parks and overall, in 2022 are not included in that chart.