

maximising wildlife returns by minimising threats...

Performance Indicators

Management performance in 2020

Category	Performance
1 Adequate staffing	
2 Adequate expenditure	
3 Audit attendance	
4 NR management plan	
5 Zonation	
6 Leadership	
7 Display of material	
8 Event Book modules	
9 Event Book quality	
10 Compliance	
11 Game census	
12 Reporting & adaptive management	
13 Law enforcement	
14 Human Wildlife Conflict	
15 Harvesting management	
16 Sources of NR income	
17 Benefits produced	
18 Resource trends	
19 Resource targets	

Key to performance indicators

weak/bad

reasonable

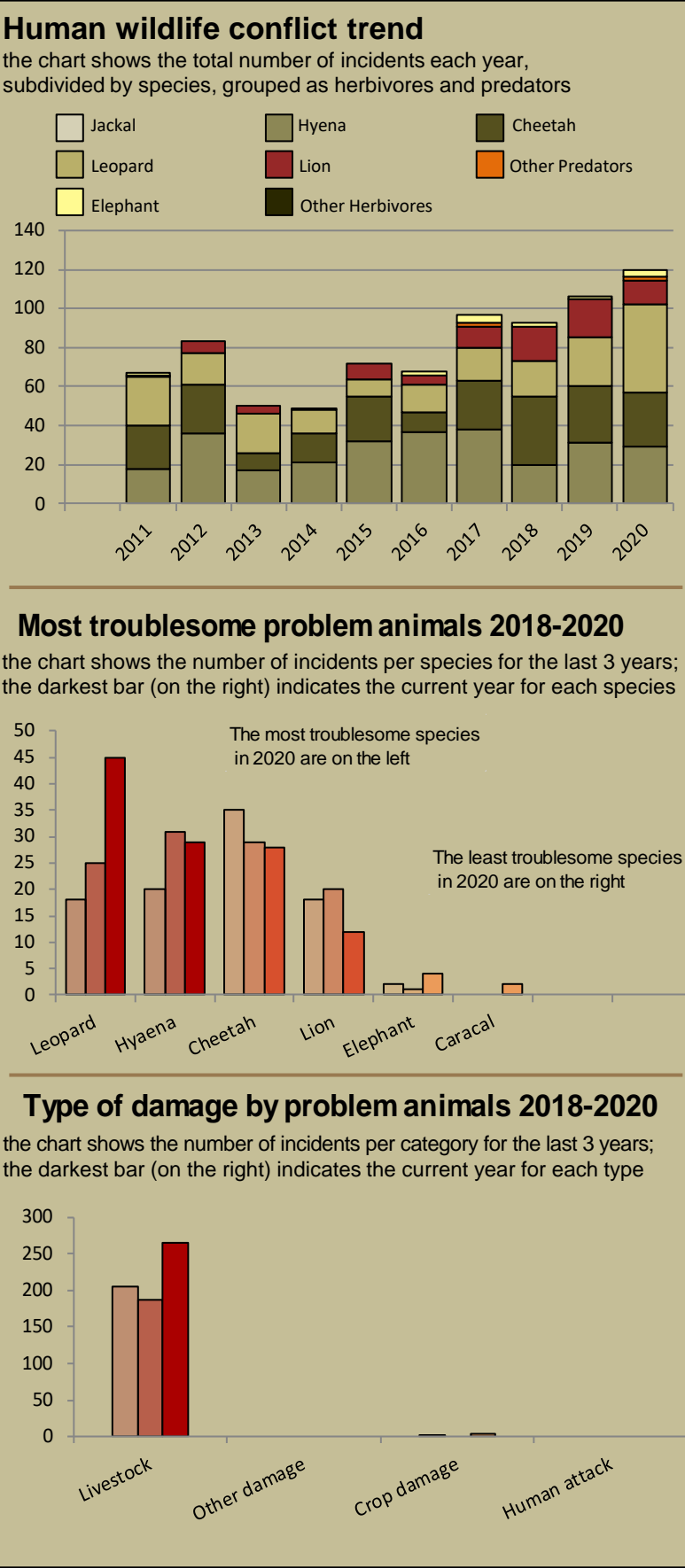
good

Performance is assessed on a scoring system from zero (none) to a maximum of between 3 and 6 (strong/excellent) depending on the indicator.

Indicators 1-17 reflect the performance of the management team in place in the conservancy and an efficient team can achieve a good rating in all 17 indicators.

Indicators 18 & 19 are influenced by external factors and are not considered a reflection of conservancy management. They indicate the current status of wildlife in the conservancy in relation to a theoretical optimal situation.

Human wildlife conflict



Poaching

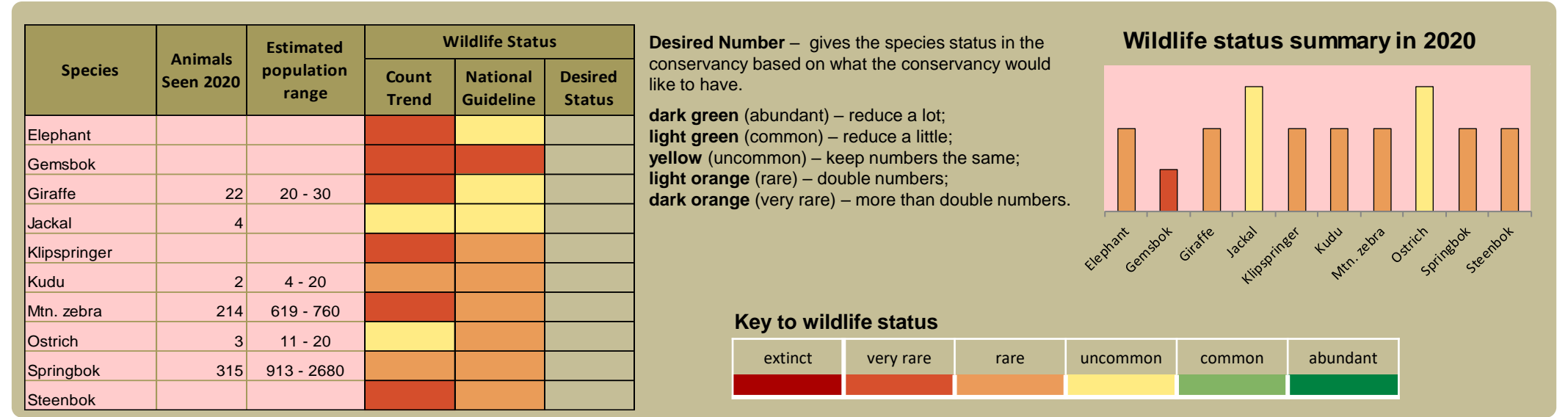


Wildlife removals – quota use and value

Potential value estimates (N\$) for a single animal:	Species	Quota 2020			Animals actually used in 2020						Potential	
		Total	Trophy	Other Use	Trophy	Own Use & Premium	Shoot & Sell	Capture & Sale	Problem Animal	Total Use	Trophy Value N\$	Other use Value N\$
<div><div>Potential trophy value</div><div>the average trophy value for that species in the conservancy landscape</div><div>trophy values vary depending on trophy quality, international recognition of the hunting operator and the hunting area</div><div>Potential other use value</div><div>the average live sale value of each high value species (indicated with an *). High value species are never used for meat</div><div>Fractions of animals indicate that a quota of 1 animal was awarded with conditions i.e.</div><div>a) over a period of several years and/or</div><div>b) is shared with other conservancies</div></div>	Baboon	5	5								600	
	Giraffe	2	2								10,600	
	Kudu*	1	1								9,900	10,842
	Leopard	1	1								38,900	
	Ostrich	2	2								2,000	
	Springbok	12	6	6							2,700	702
	Mtn Zebra	4	2	2							6,300	4,482

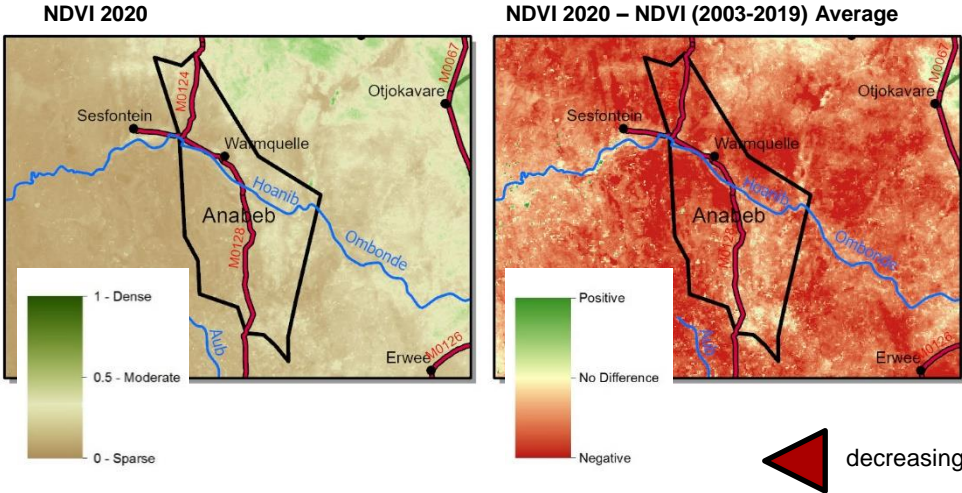
monitoring numbers and trends for a healthy conservancy...

Current wildlife numbers and status

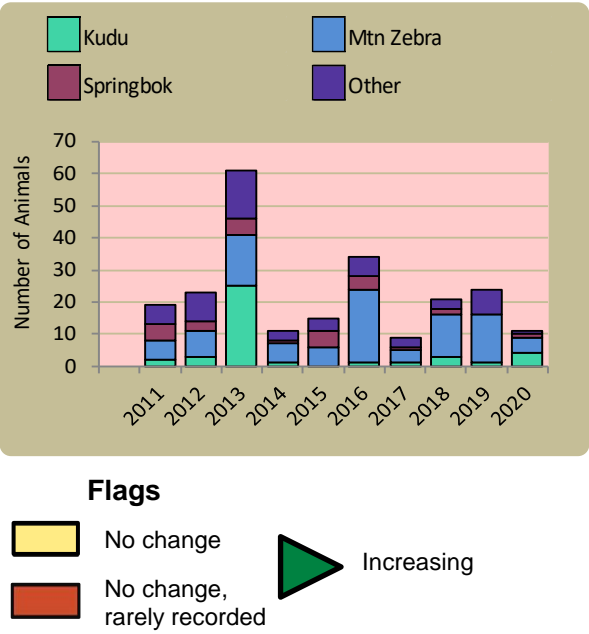


Vegetation monitoring

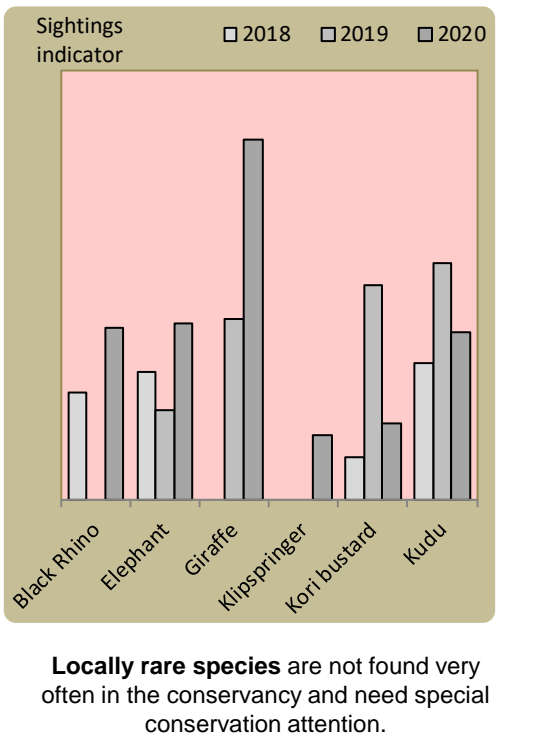
Green vegetation index (NDVI). Maps show vegetation cover during Feb-Apr of the current year and the difference between the current year and the long-term average (2003-2019)



Wildlife mortalities

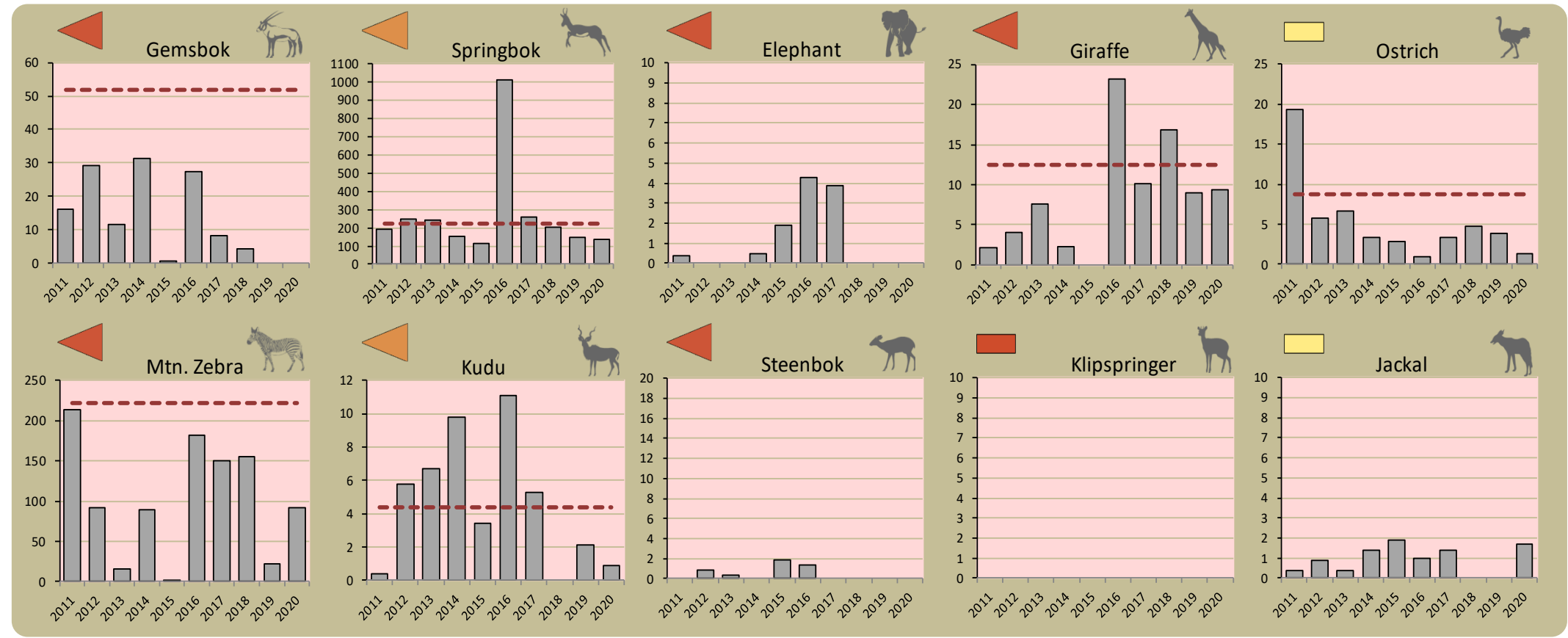


Locally rare species



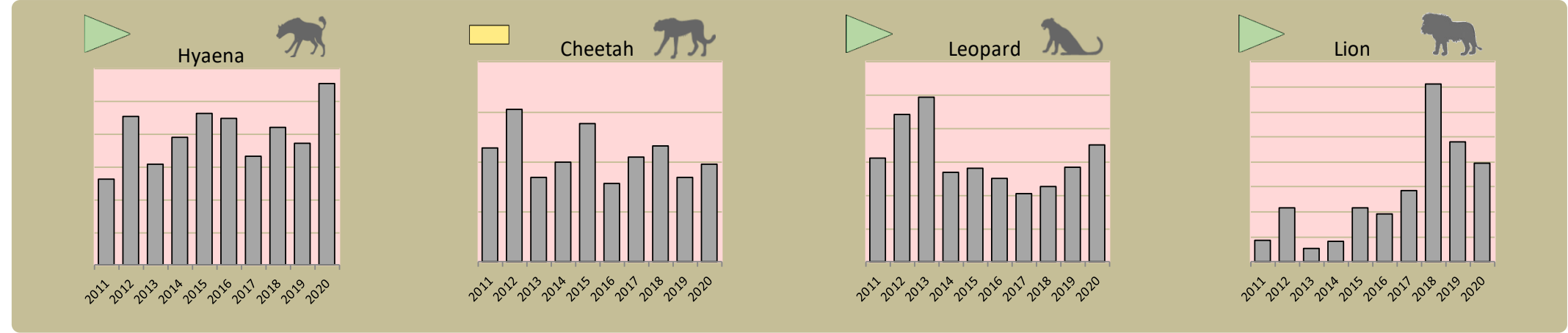
Annual game count

Charts show the number of animals seen each year per 100 km driven during the game count. As a point of reference the dashed horizontal line represents the combined 10 year average in Palmwag and Etendeka concessions. Status flags reflect the general count trend over the last 5 years.



Predator monitoring

charts show the average number of animals seen per Event Book each year
status barometers reflect the general sightings trend over the last 5 years



Wildlife provides a wide range of benefits. Some wildlife can cause conflicts, but all wildlife is of value to tourism, trophy hunting and a healthy environment.

By using all the available information and adapting and improving activities, threats such as human wildlife conflict, poaching and other issues can be minimised.

Key Compliance Requirements

Was an AGM held?	✗
Were elections held?	N/A
Were benefits distributed according to the BDP?	✓
Is game managed according to the GMUP?	✓
Was the financial report presented and approved?	✗

Benefit Distribution

	Male	Female	Total
Conservancy staff (Incl. CGG & CRM)	12	10	22
Number of Community Game Guards	10	4	14
Number of Community Resource Monitors			
Lodge staff	5	1	6

How well did the conservancy perform in the past year?

<i>Performance Category</i>	<i>This Year</i>	<i>Prev. Year</i>	<i>Explanation of performance category</i>
1 Member engagement			The conservancy is adequately engaging its members
2a Benefit planning			The conservancy developed its BDP in a transparent and participatory manner
2b Benefit distribution			The conservancy distributes benefits to its members in a fair, transparent and equitable manner
3 Accountability			Conservancy members are holding the management committee accountable
4 Compliance			The conservancy is compliant with the standard operating procedures (SOPs)
5 Stakeholder engagement			The conservancy maintains relationships with key external stakeholders
6 Financial management			The conservancy is effectively managing its finances

Colour codes:

none

weak

moderate

strong

exceptional

N/A