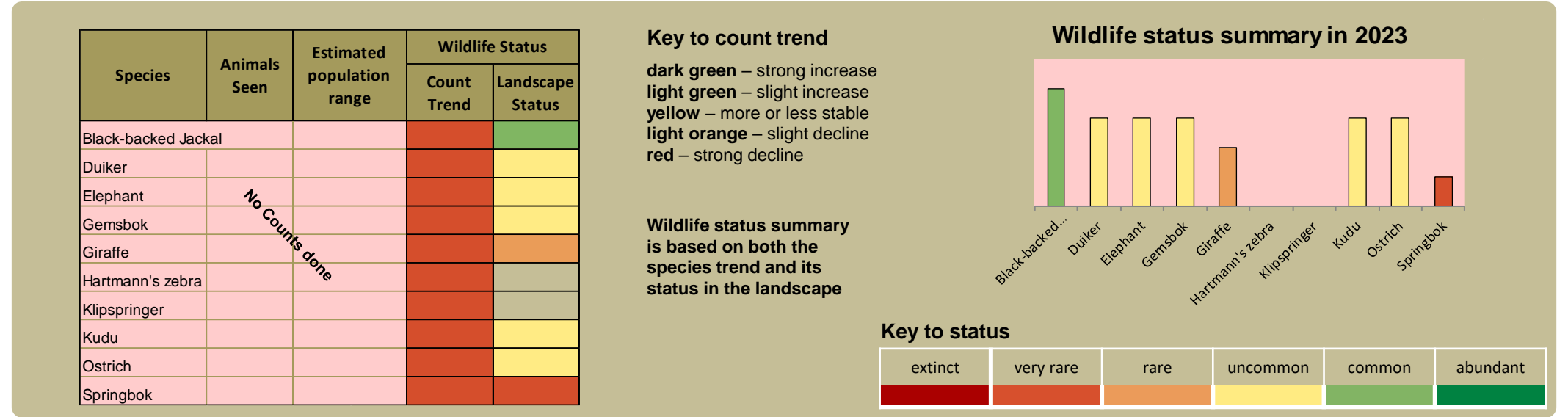


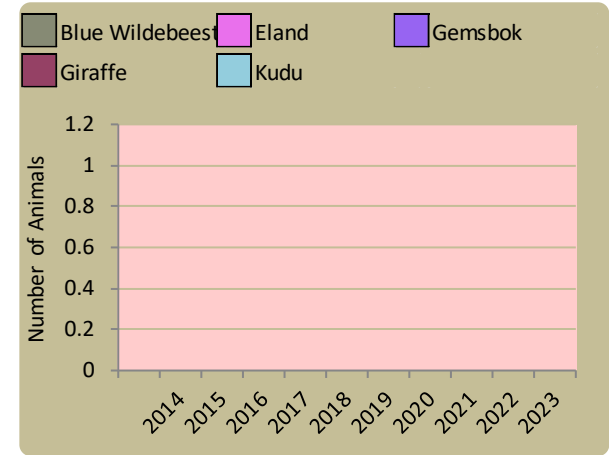


monitoring numbers and trends for a healthy conservancy...

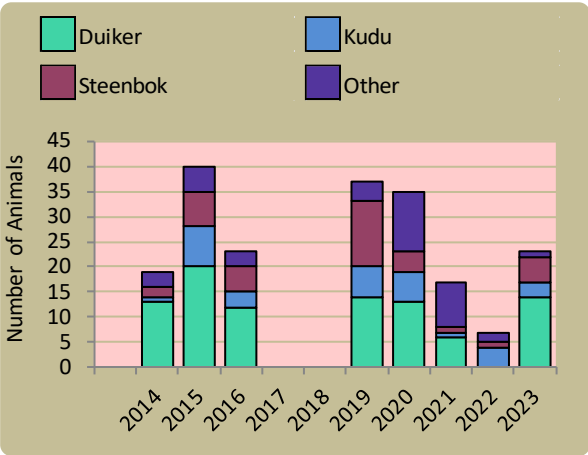
Current wildlife numbers and status



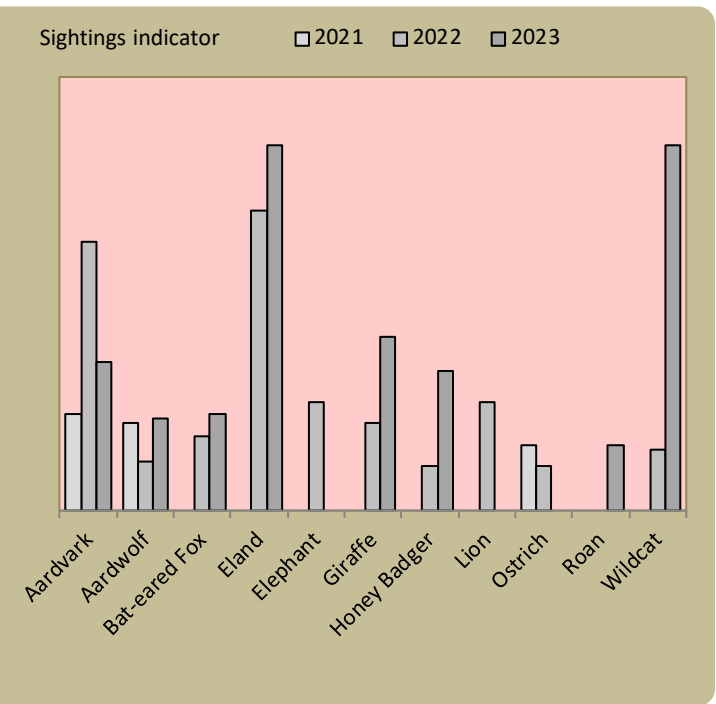
Wildlife introductions



Wildlife mortalities



Locally rare species

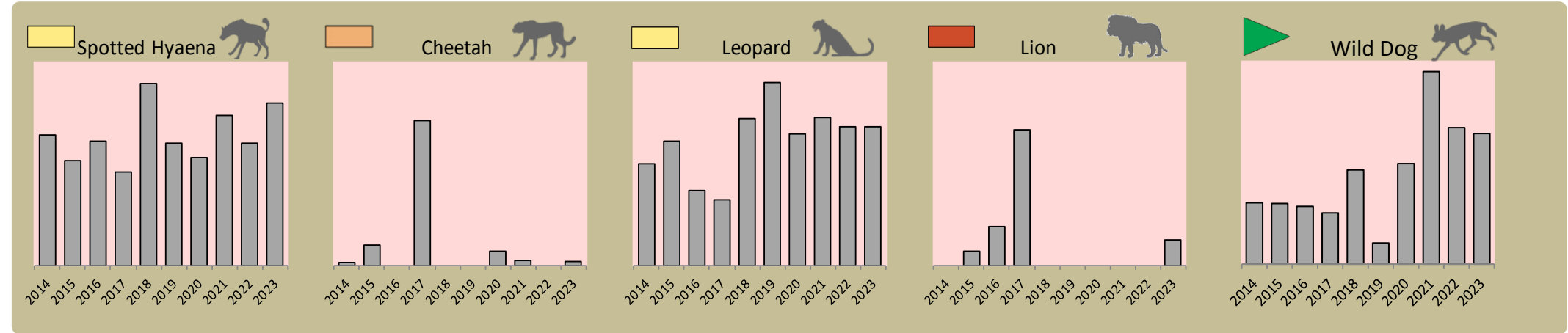


Annual game count – not undertaken in the east

Locally rare species are not found very often in the conservancy and need special conservation attention.

Predator monitoring

charts show the average number of animals seen per Event Book each year status barometers reflect the general sightings trend over the last 5 years



Wildlife provides a wide range of benefits. Some wildlife can cause conflicts, but all wildlife is of value to tourism, trophy hunting and a healthy environment.

By using all the available information and adapting and improving activities, threats such as human wildlife conflict, poaching and other issues can be minimised.

# Enabling wise conservancy governance...

## Conservancy Statistics

Date Registered:	July 2003
Population (2011 census):	3540
Size (square kilometres):	9120
Registered members:	2550

## Key Compliance Requirements

Was an AGM held?	✓
Were elections held?	✓
Were benefits distributed according to the BDP?	✓
Is game managed according to the GMUP?	✓
Was the financial report presented and approved?	✓

## Conservancy Governance

	Male	Female	Total
Number of management committee members	7	2	9
Attendance at AGM			
Date of the last AGM:	25/07/2023		
Date of the next AGM:	Jul-24		
Other important issues			
Budget approved?	✓		
Work plan approved?	✓		
Annual conservancy report approved?	✓		

## Benefit Distribution

Type	Description	Beneficiary	Number
Community Devp.	Water Infrastructure Development	Villages	15
Social Benefits	School Feeding Scheme And Funeral Assistance	Funeral Assistance/ Schools	53 16
Meat Distribution	Benefit To Communities	Villages	25
Other Benefits	TA Allowance	TA	1

## Employment

	Male	Female	Total
Conservancy staff (Incl. CGG & CRM)	14	1	15
Number of Community Game Guards	12	0	12
Number of Community Resource Monitors			

## Governance Performance Rating

How well did the conservancy perform in the past year?

Performance Category	This Year	Prev. Year	Explanation of performance category
Member engagement			The conservancy is adequately engaging its members
Benefit planning			The conservancy developed its BDP in a transparent and participatory manner
Benefit distribution			The conservancy distributes benefits to its members in a fair, transparent and equitable manner
Accountability			Conservancy members are holding the management committee accountable
Stakeholder engagement			The conservancy maintains relationships with key external stakeholders
Financial management			The conservancy is effectively managing its finances
Colour codes: none weak moderate strong exceptional N/A			